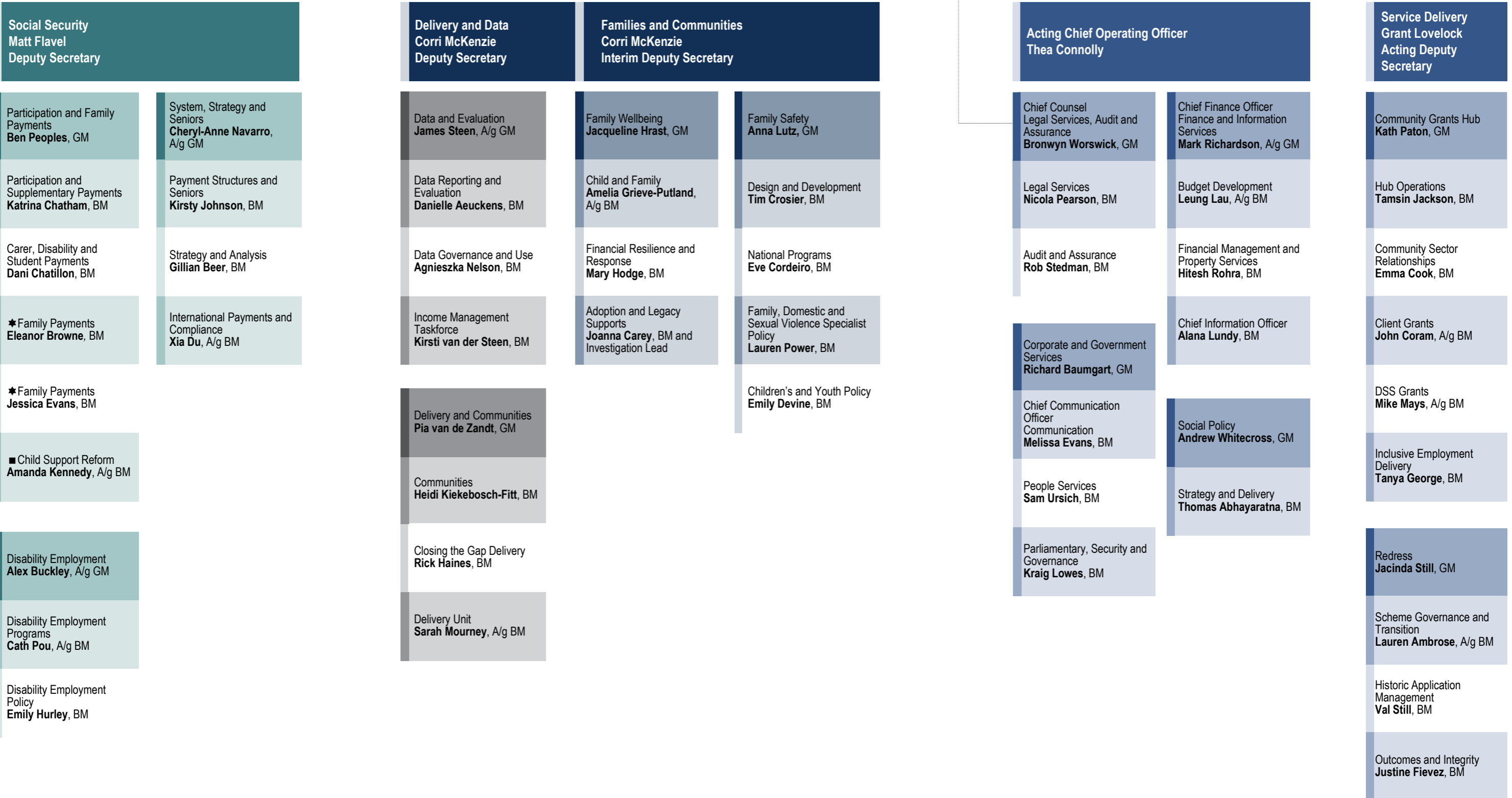


**Michael Lye**  
**SECRETARY**

**Chief of Staff**  
**Office of the Secretary**  
**Ellen Fitzgerald, A/g BM**



**Legend**  
 "A/g" indicates the employee is temporarily acting in the role  
 "GM" Group Manager  
 "BM" Branch Manager  
 ■ indicates a temporary group/branch  
 ... Chief Counsel reports to both the Secretary and the Chief Operating Officer  
 ★ Job share arrangement