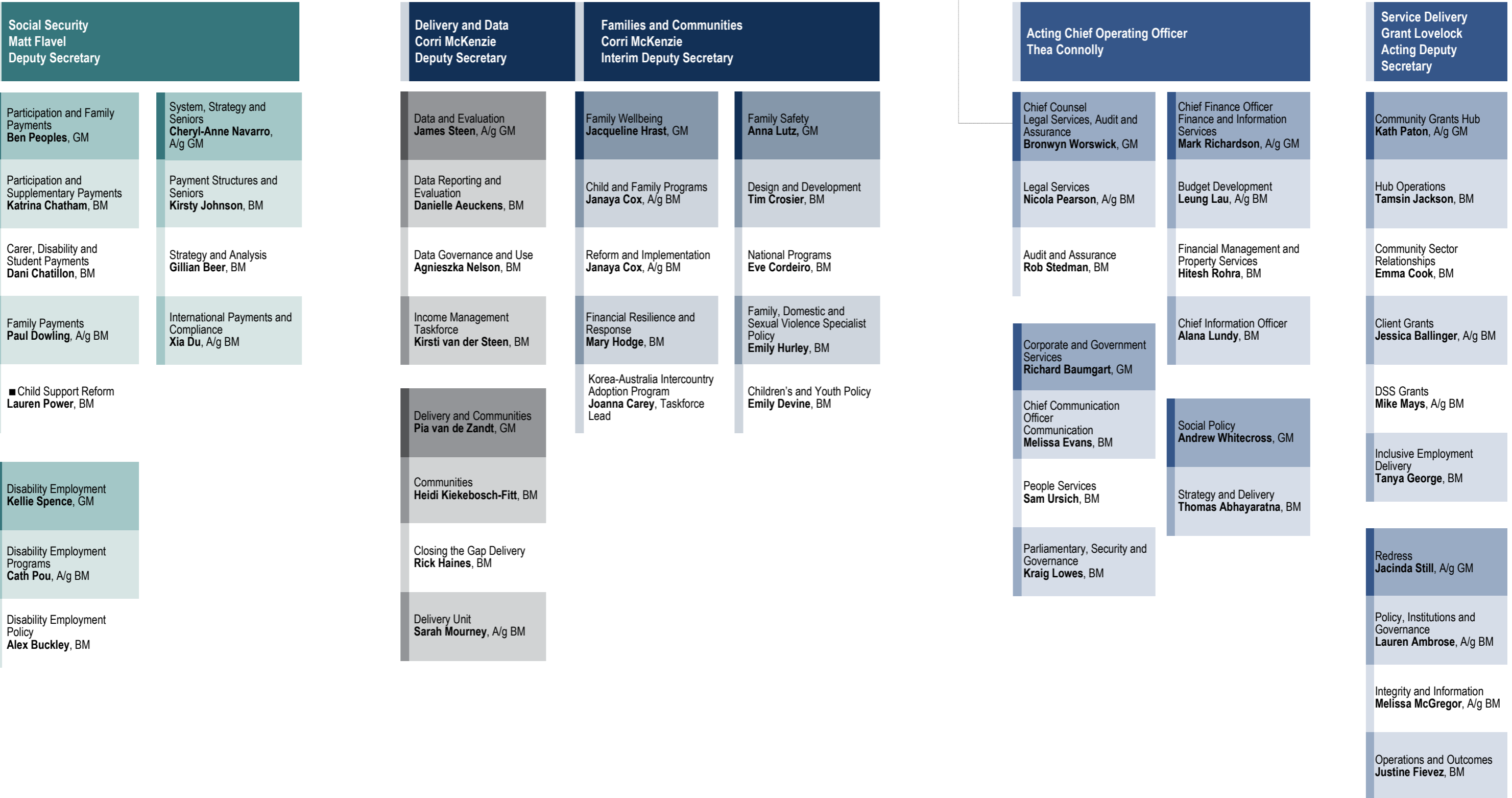


Michael Lye
SECRETARY

Chief of Staff
Office of the Secretary
Ellen Fitzgerald, A/g BM



Legend
 "A/g" indicates the employee is temporarily acting in the role
 "GM" Group Manager
 "BM" Branch Manager
 ■ indicates a temporary group/branch
 ... Chief Counsel reports to both the Secretary and the Chief Operating Officer