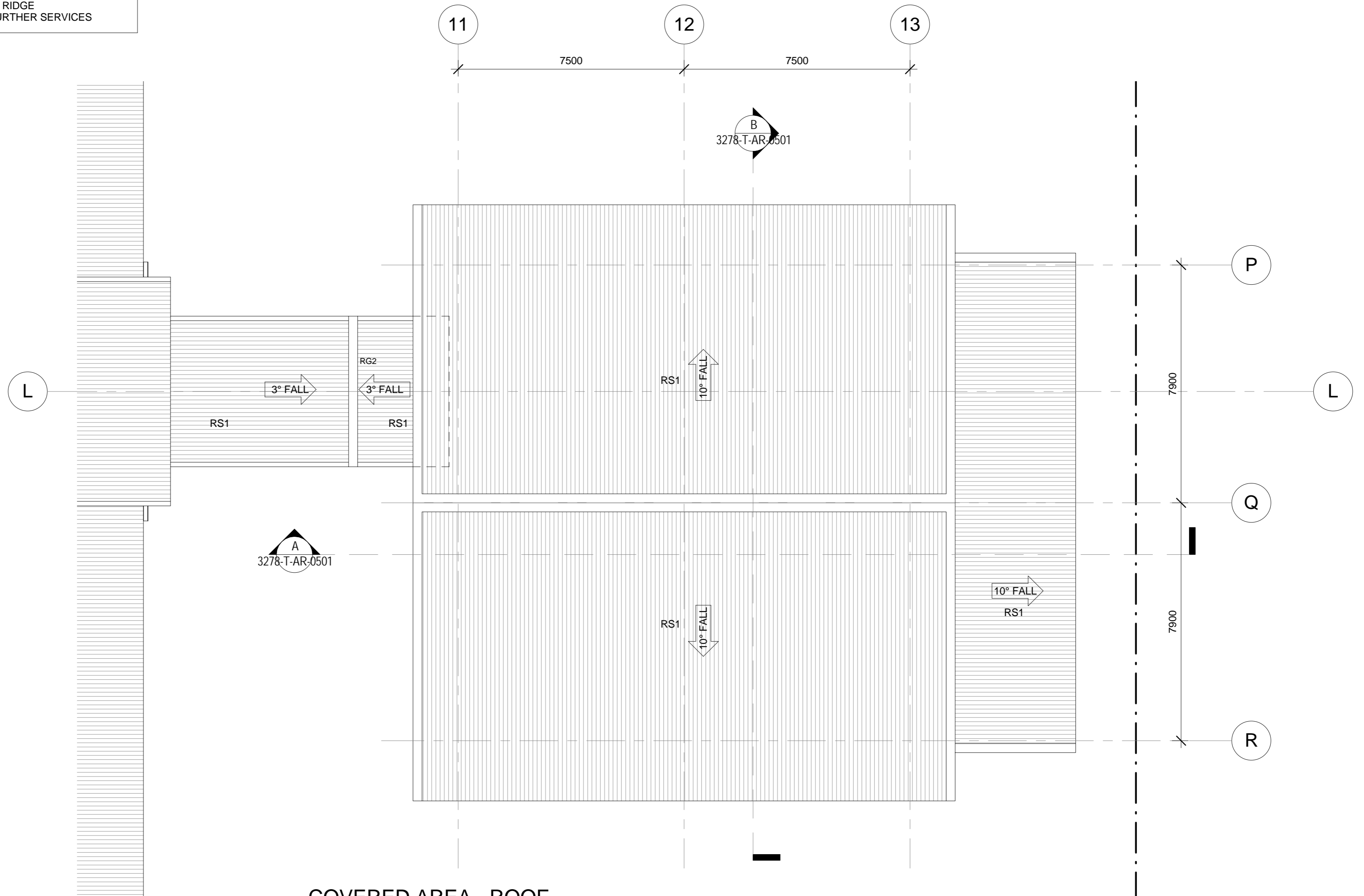


REFER DRAWINGS 0902 FOR WALL ELEVATIONS

- NOTE:
- FALL ARREST SYSTEM PROVIDE DESIGN PROPOSAL FOR ARCHITECTS APPROVAL LOCATE IN LEAST VISUALLY CONSPICUOUS LOCATIONS
  - FLASH ROOF PENETRATIONS TO RIDGE REFER MECH DRAWINGS FOR FURTHER SERVICES

COVERED AREA - GROUND FLOOR

1:100



COVERED AREA - ROOF

1:100

**TENDER ISSUE - NOT FOR CONSTRUCTION**

FISHER BUTTROSE ARCHITECTS PTY LTD  
 ABN 078 745 856  
 P 07 4031 1707 F 07 4041 5881  
 LEVEL 1, 116 GRAFTON STREET  
 4807 PO BOX 5107  
 CAIRNS QUEENSLAND AUSTRALIA  
 www.fisherbttrosc.com.au

AMENDMENTS

ISSUE	DATE	DESCRIPTION	INT
1	16-02-2011	TENDER ISSUE	BK



WESTERN CAPE  
 RESIDENTIAL CAMPUS  
 TAMARIND ROAD, WEIPA  
 INDIGENOUS LAND CORPORATION

COVERED AREA - FLOOR & ROOF PLANS

SCALE AT A1 1:100

APPROVED MB DRAWN BK PROJECT No. 1008

DRAWING No. 3278-T-AR-0210 ISSUE 1