



Australian Government
Department of Social Services

DSS Data Exchange System

Bulk File Upload Technical Specifications

Version Number: 1.2

Revision Date: 21 July 2015

Document Change History

Version	Date	Change
1.0	14 October 2014	Initial document release. First Document reference 32,089,311
1.1	28 th November 2014	Remove CRN and ConsentGivenToDepartment as an element of Client as they are no longer required.
1.2	21 st July 2015	Additions for "CHSP programme specific" changes for Client, Case & Session.

Table of Contents

1	Overview.....	5
1.1	The DSS Data Exchange	5
1.2	Purpose of this Document.....	5
2	Interface Details	6
2.1	Getting started	6
2.2	Business Process Summary	6
2.3	Business Process Diagram	8
2.4	File Format	9
2.5	Security and Authentication	9
3	Reference Data.....	10
3.1	XML schema file	10
3.2	Reference data	11
3.2.1	Reference data file format.....	11
3.3	Outlets and Programme activities data.....	13
3.3.1	Outlets and Programme activities data.....	13
4	Bulk Upload XML File.....	14
4.1	XML Data Types	14
4.2	XML Validation Rules.....	14
4.3	XML Input File Details.....	14
4.3.1	XML Input File Processing	14
4.4	XML Input File Definition	14
4.4.1	Clients.....	15
4.4.2	Cases	19
4.4.3	Sessions	21
4.4.4	SessionAssessments.....	25
4.4.5	ClientAssessments	27
5	Error Processing	28
5.1	View Uploaded Files	28
5.2	Error Report File Format	29
5.2.1	Format	29
5.2.2	Error Report File Details	29
5.2.3	Error Report File Definition.....	29
6	Appendix A. Sample XML	30
7	Appendix B. Activity Specific Requirements	34

8 Appendix C. Service Type Specific Requirements..... 35

1 Overview

1.1 The DSS Data Exchange

As part of a new way of working, the Department of Social Services (DSS) is implementing improved programme performance reporting processes in grant agreements. DSS will progressively introduce standardised, prioritised, and collaborative reporting processes across many of our grants programmes from 1 July 2014 to 1 July 2015.

This new approach to reporting will be streamlined, processes automated and there will be a shift in focus of performance measurement from outputs to more meaningful information about service delivery outcomes.

Data requirements will be divided into two parts: a small set of mandatory *priority requirements* that all service providers must report, and a voluntary extended data set that providers can choose to share with the Department in return for relevant and meaningful reports, known as the *partnership approach*.

Providers who do not have their own case management tools can access a free, simple IT system (the *DSS Data Exchange* web-based portal). The *DSS Data Exchange* also supports providers who have compatible case management tools to transfer information directly from their own systems through bulk uploading and system to system transfers.

1.2 Purpose of this Document

This document specifies the technical requirements for service providers who would prefer to transmit their data using bulk uploads. This document will focus on the technical requirements for uploading an XML file on to the DSS Data Exchange.

The following is described within this document:

- a) Interface details – technical infrastructure, security and authentication
- b) Reference data
- c) Bulk Upload XML File – data formats, commonly used data terms, examples
- d) Error processing

The *DSS Data Exchange Bulk File Upload Technical Specifications* should be read in conjunction with the *DSS Data Exchange Protocols*, available on the [DSS Website](#).

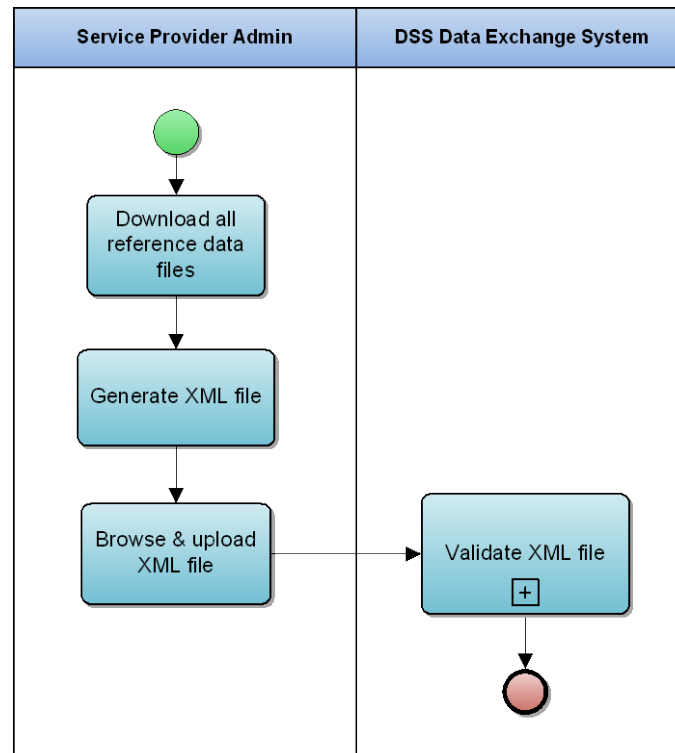
Support for the interface will be provided by email between Monday to Friday, 8:30am to 5:00pm AEST, excluding ACT public holidays. For assistance in regards to content in the *Bulk File Upload Technical Specifications*, please contact the helpdesk at DataExchange.DeveloperSupport@DSS.gov.au.

2 Interface Details

Service providers have the option to generate an XML file (containing client, case, session, session assessment and client assessment data) from their in-house application and upload this file in to the DEX Web Portal.

2.1 Getting started

The following diagram illustrates the process for generating a valid XML file to upload:



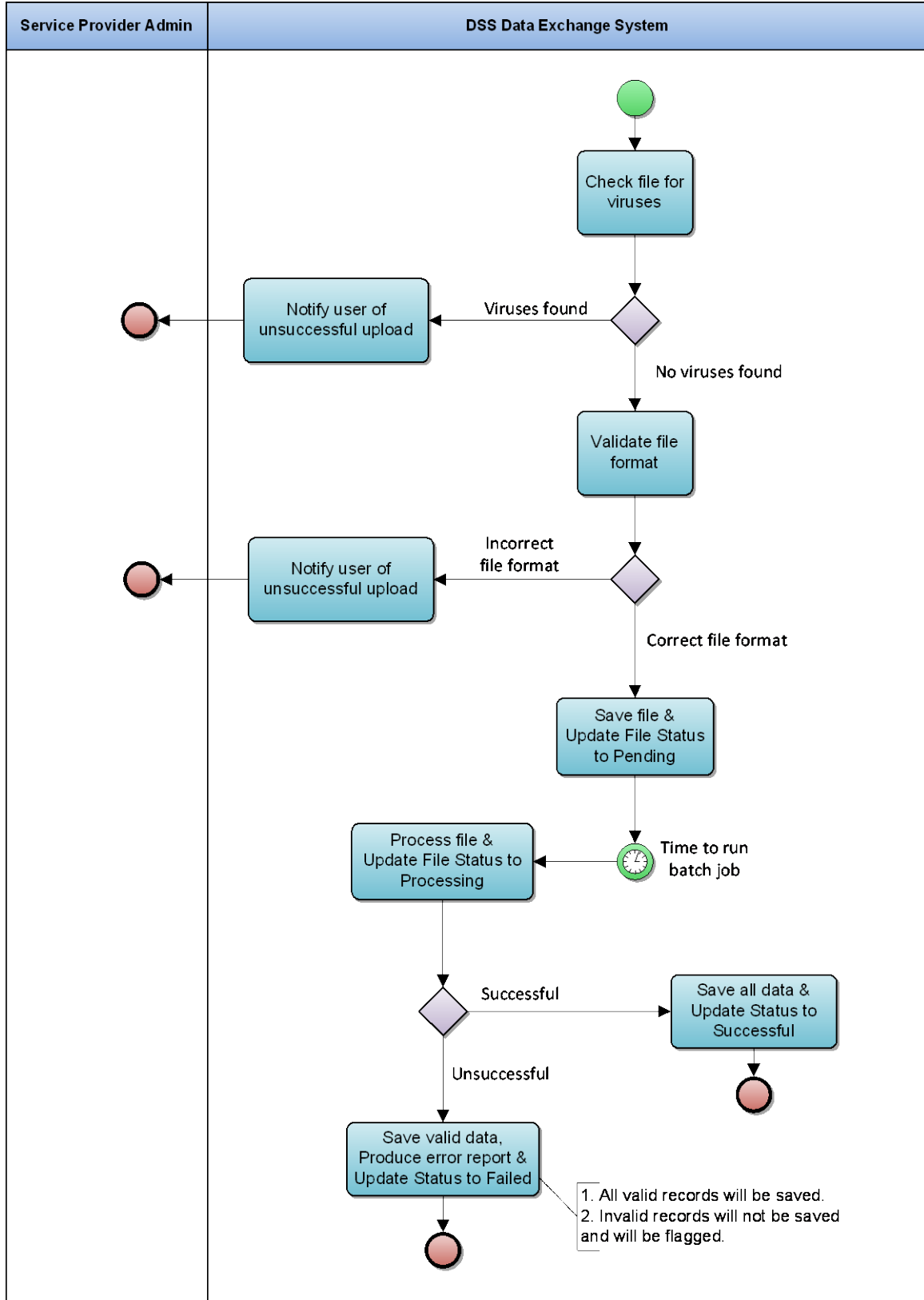
2.2 Business Process Summary

1. Service providers enter client, case, session, client assessment and session assessment details in their in-house systems.
2. Service providers export an xml file with client, case, session, client assessment and session assessment requests from their in-house system. (in a known format – see later for definitions)
3. There are five different types of entities in DEX. They are Client, Case, Session, Client Assessment and Session Assessment. An XML file for each of the entity can be uploaded in DEX Web Portal as a single XML file or each entity can have their own XML file uploaded in DEX Web Portal, or an XML file with combination of any entity type can be uploaded in DEX Web Portal. The only constraint is that an XML file should at least contain one entity type.
4. Service providers login to the DEX Web Portal and go the “Uploaded files” menu.
5. On View uploaded files page, they click on the button “Upload new file”.
6. Service providers upload the file exported in step (2) into the DEX System.

7. The DEX Web Portal will apply format validation checks to verify that the input xml file is correctly formed and if not, the service provider will get validation errors, and the file will be rejected.
8. If the file passes format validations, the DEX Web Portal will accept the input file and will be queued for processing.
9. Using the DEX Web Portal service providers can do other tasks while the processing task completes, and can come back when notified that processing has completed.
10. Using DEX Web Portal service providers can verify that all entities in their uploaded file have been successfully imported (For error processing please refer to error processing section later in this document).
11. If the entity data is not present in DEX system, then new entity will be created, otherwise for an existing entity the information will be updated. E.g. a Service provider uploads an xml file for Client with clientId of CL001. If this clientId CL001 is an existing record in DEX system for that organisation, then the client details will be updated, otherwise a new client with clientId of CL001 will be created in DEX system.

2.3 Business Process Diagram

The following diagram illustrates the file validation process when a file is uploaded in to the *DSS Data Exchange System Web portal*:



2.4 File Format

The input file format is XML. The [Bulk Upload XML File](#) section contains format details and examples.

The output error file format is CSV. The [Error Processing](#) section contains format details and examples.

2.5 Security and Authentication

The Security and Authentication function is provided via the DEX Web Portal Web UI Interface uses the AUSKey authentication mechanism.

The bulk upload function is available only to DEX Web Portal users who have Organisation Administrator role.

3 Reference Data

Reference code values are needed to prepare the XML file. Service providers are responsible for downloading these reference data and using it in the XML file that is uploaded to DEX.

There are two reference data files provided:

1. Reference data.
2. Outlets and Programme Activities data.

Additional to the reference data files, service providers can also download XML Schema file which can be used to validate the XML file uploaded.

All the above files can be downloaded by accessing the “Reference data” page via the Home page in the DEX Web Portal.

The screenshot shows the 'DSS Data Exchange' web portal. At the top left is the Australian Government logo and the text 'Australian Government Department of Social Services'. The main heading is 'DSS Data Exchange'. On the right, it says 'You are logged in to'. Below this, there is a breadcrumb trail: 'Home > Get reference data'. A large download icon (a circle with a downward arrow) is followed by the text 'Get reference data'. Below this, it says 'The latest reference data items can be downloaded below.' There are three distinct boxes, each representing a download option:

- File upload XML schema**: This file contains the XML schema that is used to validate the uploaded bulk data. [Download XML schema](#) (with a download icon).
- Reference data**: This file contains the client, case, session and assessment reference data codes. [Download reference data](#) (with a download icon).
- Outlets and Programme activities data**: This file contains the outlets and programme activities for your organisation. [Download Outlets and Programme Activities data](#) (with a download icon).

At the bottom of the page, there are links for 'Copyright and disclaimer' and 'Privacy'.

3.1 XML schema file

The uploaded XML file is validated against the rules defined in the XML schema file. If the XML file contains invalid reference codes, the XML file is rejected and the process of file upload fails.

Service providers are recommended to validate their XML files against the provided XML Schema file before uploading bulk data.

3.2 Reference data

Reference data file is a XML file which contains the reference data codes used by DEX. Service providers are responsible for downloading these reference data and using it in the XML file that is uploaded to DEX.

3.2.1 Reference data file format

Reference data file contain the code data for the following reference data items:

1. AboriginalOrTorresStraitIslanderOrigin
2. AccommodationType
3. Ancestry
4. AssessmentPhase
5. Country
6. Disability
7. DVACardStatus
8. ExitReason
9. Extraltem
10. Gender
11. HouseholdComposition
12. IncomeFrequency
13. Language
14. MainSourceOfIncome
15. MigrationVisaCategory
16. MoneyBusinessCommunityEducationWorkshop
17. ParentingAgreement
18. ParticipationType
19. ReasonForAssistance
20. ReferralPurpose
21. ReferralSource
22. ReferralType
23. ScoreType
24. Section60ICertificateType
25. State

It is an XML in the following format:

```
<ReferenceDataItems CodeType="AboriginalOrTorresStraitIslanderOrigin">
  <Item>
    <CodeValue>NO</CodeValue>
    <CodeDescription>No</CodeDescription>
    <OrderNumber>1</OrderNumber>
  </Item>
  <Item>
    <CodeValue>ABORIGINAL</CodeValue>
    <CodeDescription>Aboriginal</CodeDescription>
    <OrderNumber>2</OrderNumber>
  </Item>
  <Item>
    <CodeValue>TSI</CodeValue>
    <CodeDescription>Torres Strait Islander</CodeDescription>
    <OrderNumber>3</OrderNumber>
  </Item>
</Item>
```

```

<CodeValue>BOTH</CodeValue>
<CodeDescription>Aboriginal and Torres Strait Islander</CodeDescription>
<OrderNumber>4</OrderNumber>
</Item>
<Item>
  <CodeValue>NOTSTATED</CodeValue>
  <CodeDescription>Not stated/Inadequately described</CodeDescription>
  <OrderNumber>5</OrderNumber>
</Item>
</ReferenceDataItems>

```

The reference data file also contains the code data for assessments in the following format:

```

<AssessmentReferenceDataItems>
  <AssessmentReferenceDataItem>
    <ScoreType>SATISFACTION</ScoreType>
    <ApplicableFor>Client</ApplicableFor>
    <Domains>
      <Domain>
        <DomainCode>SERVICELISTENED</DomainCode>
        <DomainDescription>The service listened to me and understood my issues</DomainDescription>
        <Scores>
          <Score>
            <ScoreCode>SERVICELISTENED1</ScoreCode>
            <Description />
          </Score>
          <Score>
            <ScoreCode>SERVICELISTENED2</ScoreCode>
            <Description />
          </Score>
          <Score>
            <ScoreCode>SERVICELISTENED3</ScoreCode>
            <Description />
          </Score>
          <Score>
            <ScoreCode>SERVICELISTENED4</ScoreCode>
            <Description />
          </Score>
          <Score>
            <ScoreCode>SERVICELISTENED5</ScoreCode>
            <Description />
          </Score>
        </Scores>
      </Domain>
      <Domain>
        <DomainCode>SERVICERECEIVED</DomainCode>
        <DomainDescription>I am satisfied with the services I have received</DomainDescription>
        <Scores>
          <Score>
            <ScoreCode>SERVICERECEIVED1</ScoreCode>
            <Description />
          </Score>
          <Score>
            <ScoreCode>SERVICERECEIVED2</ScoreCode>
            <Description />
          </Score>
          <Score>
            <ScoreCode>SERVICERECEIVED3</ScoreCode>
            <Description />
          </Score>
          <Score>
            <ScoreCode>SERVICERECEIVED4</ScoreCode>
            <Description />
          </Score>
          <Score>
            <ScoreCode>SERVICERECEIVED5</ScoreCode>
            <Description />
          </Score>
        </Scores>
      </Domain>
      <Domain>
        <DomainCode>SITUATIONIMPROVED</DomainCode>

```

```

<DomainDescription>I am better able to deal with issues that I sought help with</DomainDescription>
<Scores>
  <Score>
    <ScoreCode>SITUATIONIMPROVED1</ScoreCode>
    <Description />
  </Score>
  <Score>
    <ScoreCode>SITUATIONIMPROVED2</ScoreCode>
    <Description />
  </Score>
  <Score>
    <ScoreCode>SITUATIONIMPROVED3</ScoreCode>
    <Description />
  </Score>
  <Score>
    <ScoreCode>SITUATIONIMPROVED4</ScoreCode>
    <Description />
  </Score>
  <Score>
    <ScoreCode>SITUATIONIMPROVED5</ScoreCode>
    <Description />
  </Score>
</Scores>
</Domain>
</Domains>
</AssessmentReferenceDataItem>
</AssessmentReferenceDataItems>

```

3.3 Outlets and Programme activities data

Outlets and Programme activities data file is an XML file which contains the information about the outlets and programme activities for the service provider's organisation. Service providers are responsible for downloading this file and using it in the XML file in the appropriate fields.

3.3.1 Outlets and Programme activities data

Outlets and Programme activities data file is in the following format:

```

<OutletActivity>
  <OutletActivityId>1</OutletActivityId>
  <OutletName>AAA Help</OutletName>
  <ActivityName>Children's Contact Services</ActivityName>
  <ProgramName>Families and Communities</ProgramName>
  <StartDate>2014-07-01T00:00:00</StartDate>
  <EndDate>2014-07-31T00:00:00</EndDate>
  <IsAgdType>>false</IsAgdType>
  <ServiceTypes>
    <ServiceType>
      <ServiceTypeId>5</ServiceTypeId>
      <Name>Education and Skills training</Name>
      <IsFinancialCapabilityWorkshop>>false</IsFinancialCapabilityWorkshop>
    </ServiceType>
  </ServiceTypes>
  <ActivitySpecificRequirements>
    <ActivitySpecificRequirement>
      <Code>AGDTYPE</Code>
      <Description>Attorney Generals Department questions</Description>
      <AffiliateWith>SERVICEGROUP</AffiliateWith>
    </ActivitySpecificRequirement>
    <ActivitySpecificRequirement>
      <Code>AGDTYPE</Code>
      <Description>Attorney Generals Department questions</Description>
      <AffiliateWith>SERVICESESSION</AffiliateWith>
    </ActivitySpecificRequirement>
  </ActivitySpecificRequirements>
</OutletActivity>

```

4 Bulk Upload XML File

4.1 XML Data Types

Definitions of the data types used in input file can be found at the World Wide Web Consortium website. The URL for the specifications for the data types is.

<http://www.w3.org/TR/xmlschema-2/#built-in-datatypes>

4.2 XML Validation Rules

The Message Definition tables in the following sections contain a column with Validation Rules. These rules along with the other business rules are applied to the data as it is processed.

All rules that apply in the online system apply to bulk uploads.

4.3 XML Input File Details

The XML file can contain any number and combination of clients, cases, sessions, client assessments and session assessments. The maximum file size allowed is **5MB**.

The XML file is validated against the XML schema file at the time of upload. If XML structure is found valid, it is queued for processing.

4.3.1 XML Input File Processing

The file is processed in the following order:

1. Clients
2. Cases
3. Sessions
4. Session Assessments
5. Client Assessments

The business rules applied in the online system are also applied during the bulk upload process.

4.4 XML Input File Definition

XML Root:	DEXFileUpload
XML Child Nodes:	Clients Cases Sessions SessionAssessments ClientAssessments

4.4.1 Clients

Clients node consists 1 or more *Client* nodes. Each *Client* node represents a client that needs to be added or updated.

4.4.1.1 Client Node

Elements within *Client* node:

Element	Mandatory Conditional Optional	Data Type	Length	Format	Comments Validation Rules
ClientId	Mandatory	string			Provider's Client Id
Slk	Optional	string			
ConsentToProvideDetails	Mandatory	boolean			Valid values: true or false If true : GivenName and FamilyName are required. If false : Slk must be provided. If GivenName, FamilyName, AddressLine1 or AddressLine2 are provided, then they will be not saved.
ConsentedForFutureContacts	Mandatory	boolean			Valid values: true or false
GivenName	Conditional	string			
FamilyName	Conditional	string			
IsUsingPseudonym	Mandatory	boolean			Valid values: true or false
BirthDate	Mandatory	date		yyyy-mm-dd	
IsBirthDateAnEstimate	Mandatory	boolean			Valid values: true or false If true : then BirthDate must be yyyy-01-01
GenderCode	Mandatory	string			Code from Reference data file.
CountryOfBirthCode	Mandatory	string			Code from Reference data file.
LanguageSpokenAtHomeCode	Mandatory	string			Code from Reference data file.
AboriginalOrTorresStraitIslanderOriginCode	Mandatory	string			Code from Reference data file.
HasDisabilities	Mandatory	boolean			Valid values: true = must provide Disabilities false = must not provide Disabilities
Disabilities	Conditional	XML			
DisabilityCode	Conditional	string			Code from Reference data file.
AccommodationTypeCode	Conditional mandatory	string			If this element is provided then it is must have value. Mandatory based on Activity Specific Requirement with Code as "ACCOMMODATIONTYPE"
DVACardStatusCode	Conditional mandatory	string			If this element is provided then it is must have value. Mandatory based on Activity Specific

DEX Bulk File Upload Technical Specification

Element	Mandatory Conditional Optional	Data Type	Length	Format	Comments Validation Rules
					Requirement with Code as "DVACARDSTATUS"
HasCarer	Conditional mandatory	boolean			If this element is provided then it must have value. Mandatory based on Activity Specific Requirement with Code as "HASCARER"
ResidentialAddress	Mandatory	XML			
AddressLine1	Optional	string			
AddressLine2	Optional	string			
Suburb	Mandatory	string			
StateCode	Mandatory	string			Code from Reference data file.
Postcode	Mandatory	string	4		Must be 4 digits
IsHomeless	Optional	boolean			Valid values: true or false
HouseholdCompositionCode	Conditional mandatory	string			If this element is provided then it must have value. Mandatory based on Activity Specific Requirement with Code as "HOUSEHOLDMANDATORY"
MainSourceOfIncomeCode	Optional	string			Code from Reference data file.
IncomeFrequencyCode	Optional	string			Code from Reference data file.
IncomeAmount	Optional	integer			Must be a whole number greater than 0.
FirstArrivalYear	Optional	integer			FirstArrivalMonth and FirstArrivalYear must be greater than or equal to DateOfBirth. FirstArrivalMonth and FirstArrivalYear must be less than or equal to today's date.
FirstArrivalMonth	Optional	string		enumeration	Valid values: January February March April May June July August September October November December
MigrationVisaCategoryCode	Optional	string			Code from Reference data file.
AncestryCode	Optional	string			Code from Reference data file.

4.4.1.2 Client Node XML

Sample *Client* node XML with Schema validation rules:

```

<Client>
  <!--Mandatory.-->
  <ClientId>CLJoeBlog</ClientId>
  <!--Not mandatory.-->
  <!--If element is present in the XML, then a value must be provided.-->
  <Slk>L020E010120141</Slk>
  <!--Mandatory. Values allowed true or false in lower case.-->
  <ConsentToProvideDetails>true</ConsentToProvideDetails>
  <!--Mandatory. Values allowed true or false in lower case.-->
  <ConsentedForFutureContacts>true</ConsentedForFutureContacts>
  <!--Not mandatory.-->
  <!--If element is present in the XML, then a value must be provided.-->
  <GivenName>Joe</GivenName>
  <!--Not mandatory.-->
  <!--If element is present in the XML, then a value must be provided.-->
  <FamilyName>Blog</FamilyName>
  <!--Mandatory. Values allowed true or false in lower case-->
  <IsUsingPsuedonym>false</IsUsingPsuedonym>
  <!--Mandatory. Must be in a valid datetime.-->
  <BirthDate>2014-02-24</BirthDate>
  <!--Mandatory. Values allowed true or false in lower case.-->
  <IsBirthDateAnEstimate>false</IsBirthDateAnEstimate>
  <!--Mandatory.-->
  <GenderCode>MALE</GenderCode>
  <!--Mandatory.-->
  <CountryOfBirthCode>1101</CountryOfBirthCode>
  <!--Mandatory.-->
  <LanguageSpokenAtHomeCode>1201</LanguageSpokenAtHomeCode>
  <!--Mandatory.-->
  <AboriginalOrTorresStraitIslanderOriginCode>NO</AboriginalOrTorresStraitIslanderOriginCode>
  <!--Mandatory. Values allowed true or false in lower case.-->
  <HasDisabilities>true</HasDisabilities>
  <!--Not mandatory.-->
  <!--If element is present in the XML, then at least 1 DisabilityCode must be provided.-->
  <Disabilities>
    <DisabilityCode>Physical</DisabilityCode>
  </Disabilities>
  <!--Not mandatory. If element is present in the XML, then a value must be provided -->
  <AccommodationTypeCode>BOARDING</AccommodationTypeCode>
  <!--Not mandatory. If element is present in the XML, then a value must be provided -->
  <DVACardStatusCode>BOARDING</DVACardStatusCode>
  <!--Not mandatory, If element is present in the XML, Values allowed true or false in lower case.-->
  <HasCarer>BOARDING</HasCarer>
  <ResidentialAddress>
    <!--Not mandatory.-->
    <!--If element is present in the XML, then a value must be provided.-->
    <AddressLine1>Unit 1 </AddressLine1>
    <!--Not mandatory.-->
    <!--If element is present in the XML, then a value must be provided.-->
    <AddressLine2>3 xyz street</AddressLine2>
    <!--Mandatory.-->
    <Suburb>Sydney</Suburb>
    <!--Mandatory.-->
    <StateCode>NSW</StateCode>
    <!--Mandatory and must be 4 numerical characters.-->
    <Postcode>2905</Postcode>
  </ResidentialAddress>
  <!--Not mandatory.-->
  <!--If element is present in the XML, then a value of true or false must be provided.-->
  <IsHomeless>true</IsHomeless>
  <!--Not mandatory.-->
  <!--If element is present in the XML, then a value must be provided.-->
  <HouseholdCompositionCode>GROUP</HouseholdCompositionCode>
  <!--Not mandatory.-->
  <!--If element is present in the XML, then a value must be provided.-->
  <MainSourceOfIncomeCode>NIL</MainSourceOfIncomeCode>
  <!--Not mandatory.-->

```

```

<!--If element is present in the XML, then a value must be provided.-->
<IncomeFrequencyCode>FORTNIGHTLY</IncomeFrequencyCode>
<!--Not mandatory.-->
<!--If element is present in the XML, then a value must be provided.-->
<IncomeAmount>1</IncomeAmount>
<!--Not mandatory.-->
<!--If element is present in the XML, then a value must be provided.-->
<FirstArrivalYear>2014</FirstArrivalYear>
<!--Not mandatory.-->
<!--If element is present in the XML, then a valid value (Month) must be provided.-->
<FirstArrivalMonth>February</FirstArrivalMonth>
<!--Not mandatory.-->
<!--If element is present in the XML, then a value must be provided.-->
<MigrationVisaCategoryCode>SKILLED</MigrationVisaCategoryCode>
<!--Not mandatory.-->
<!--If element is present in the XML, then a value must be provided.-->
<AncestryCode>1103</AncestryCode>
</Client>

```

4.4.2 Cases

Cases node contains 1 or more Case nodes. Each Case node represents a case that needs to be added or updated.

4.4.2.1 Case Node

Elements within Case node:

Element	Mandatory Conditional Optional	Data Type	Length	Format	Comments Validation Rules
Caseld	Mandatory	string			Provider's Case Id. This is unique within the organisation.
OutletActivityId	Mandatory	integer			Must be an OutletActivityId from Outlets and Programme Activities data file.
TotalNumberOfUnidentifiedClients	Mandatory	integer			Number of unidentified clients associated with the case. An unsigned integer, which can contain value from 0 to 999.
ParentingAgreementOutcome	Optional	XML			This will contain details about Parenting Agreement Outcome data.
Section60I	Optional	XML			This will contain details of Section60I data.
CaseClients	Optional	XML			It contains 1 or more CaseClient nodes to be associated with the case. If no CaseClients are provided, then TotalNumberOfUnidentifiedClients must be greater than zero.

4.4.2.1.1 CaseClient Node

Elements within each CaseClient Node

Element	Mandatory Conditional Optional	Data Type	Length	Format	Comments Validation Rules
ClientId	Mandatory	string			Provider's Client Id. This is unique within the organisation.
ReferralSourceCode	Optional	string			Code from Reference data file
ReasonsForAssistance	Optional	XML			This will contain list of ReasonForAssistance nodes. If element is present in the XML, then at least one ReasonForAssistance must be provided.
ExitReasonCode	Optional	XML			Code from Reference data file ExitReasonCode can only be provided for the following activities: Community and Home Support, Assistance with Care and Housing and Care Relationships and Carer Support.

4.4.2.1.1 ReasonForAssistance Node

Elements within each *ReasonForAssistance* Node

Element	Mandatory Conditional Optional	Data Type	Length	Format	Comments Validation Rules
ReasonForAssistanceCode	Mandatory	string			Code from Reference data file
IsPrimary	Mandatory	boolean			Valid values: true or false There must be 1 and only 1 ReasonForAssistance with IsPrimary = true.

4.4.2.1.2 ParentingAgreementOutcome Node

Elements within ParentingAgreementOutcome Node

Element	Mandatory Conditional Optional	Data Type	Length	Format	Comments Validation Rules
ParentingAgreementOutcomeCode	Mandatory	string			Code from Reference data file
DateOfParentingAgreement	Mandatory	date		yyyy-mm-dd	.
DidLegalPractitionerAssistWithFormalisingAgreement	Mandatory	boolean			Valid values: true or false

4.4.2.1.3 Section60I Node

Elements within Section60I Node

Element	Mandatory Conditional Optional	Data Type	Length	Format	Comments Validation Rules
Section60ICertificateTypeCode	Mandatory	string			Code from Reference data file
DateIssued	Mandatory	date		yyyy-mm-dd	

4.4.2.2 Case Node XML

Sample Case node XML with Schema validation rules:

```

<Case>
  <!--Mandatory.-->
  <CaseId>CAJoeBlog</CaseId>
  <!--Mandatory. Values allowed integers-->
  <OutletActivityId>12</OutletActivityId>
  <!--Mandatory. Values allowed integers between 0 - 999 -->
  <TotalNumberOfUnidentifiedClients>0</TotalNumberOfUnidentifiedClients>
  <!--Not mandatory.-->
  <!--If element is present in the XML, then a value must be provided.-->
  <ParentingAgreementOutcomeCode>FULL</ParentingAgreementOutcomeCode>
  <!--Not mandatory.-->
  <!--If element is present in the XML, then at least 1 Client must be provided.-->
  <CaseClients>
    <CaseClient>
      <!--Mandatory.-->
      <ClientId>CLJoeBlog</ClientId>
      <!--Not mandatory.-->
      <!--If element is present in the XML, then a value must be provided.-->
      <ReferralSourceCode>CENTRELINK</ReferralSourceCode>
      <!--Not mandatory.-->
      <!--If element is present in the XML, then atleast 1 ReasonForAssistance must be provided.-->
      <ReasonsForAssistance>
        <ReasonForAssistance>
          <!--Mandatory.-->
          <ReasonForAssistanceCode>FAMILY</ReasonForAssistanceCode>
          <!--Mandatory. Values allowed true or false in lower case-->
          <IsPrimary>true</IsPrimary>
        </ReasonForAssistance>
        <ReasonForAssistance>
          <!--Mandatory.-->
          <ReasonForAssistanceCode>MATERIAL</ReasonForAssistanceCode>
          <!--Mandatory. Values allowed true or false in lower case-->
          <IsPrimary>>false</IsPrimary>
        </ReasonForAssistance>
      </ReasonsForAssistance>
      <!--Not mandatory.-->
      <!--If element is present in the XML, then a value must be provided.-->
      <ExitReasonCode>MOVED</ExitReasonCode>
    </CaseClient>
  </CaseClients>
  <!--Not mandatory.-->
  <!--If element is present in the XML, then data must be provided.-->
  <ParentingAgreementOutcome>
    <!--Mandatory.-->
    <ParentingAgreementOutcomeCode>FULL</ParentingAgreementOutcomeCode>
    <!--Mandatory.-->
    <DateOfParentingAgreement>2014-02-24</DateOfParentingAgreement>
    <!--Mandatory.-->
    <DidLegalPractitionerAssistWithFormalisingAgreement>true
  </DidLegalPractitionerAssistWithFormalisingAgreement>
  </ParentingAgreementOutcome>
  <!--Not mandatory.-->
  <!--If element is present in the XML, then data must be provided.-->
  <Section60I>
    <!--Mandatory.-->
    <Section60ITypeCode>GENUINE</Section60ITypeCode>
    <!--Mandatory.-->
    <DateIssued>2014-02-24</DateIssued>
  </Section60I>
</Case>

```

4.4.3 Sessions

Sessions node contains 1 or more *Session* nodes. Each *Session* node represents a session that needs to be added or updated.

4.4.3.1 Session Node

Elements within each *Session* Node:

DEX Bulk File Upload Technical Specification

Element	Mandatory Conditional Optional	Data Type	Length	Format	Comments Validation Rules
SessionId	Mandatory	string			Provider's Session Id. This is unique for a particular case within the organisation.
CaseId	Mandatory	string			Provider's Case Id.
SessionDate	Mandatory	date			
ServiceTypeId	Optional	integer			Code from Reference data file
TotalNumberOfUnidentifiedClients	Optional	integer			Number of unidentified clients associated with the case. An unsigned integer, which can contain value from 0 to 999 If no SessionClients are provided, then TotalNumberOfUnidentifiedClients should be greater than zero.
FeesCharged	Conditional	decimal			If the Case is of an AGD type, then FeesCharged must be provided.
InterpreterPresent	Optional	boolean			Indicating whether interpreter was present in the session.
SessionClients	Optional	XML			This will contain list of SessionClient child nodes. This child will contain details of clients associated with the case and session. If no SessionClients are provided, then TotalNumberOfUnidentifiedClients should be greater than zero.
TimeMinutes	Conditional	integer			The amount of assistance provided by an organisation, measured in quantitative time detail in minutes unit. Dependent upon the Service Types table in Appendix B.
TotalCost	Conditional	integer			The amount of assistance provided by an organisation, measured in quantitative currency detail. Dependent upon the Service Types table in Appendix B.
Quantity	Conditional	integer			The amount of assistance provided by an organisation, measured in quantitative detail. Dependent upon the Service Types table in Appendix B.
Extraltems	Conditional	XML			Contains zero or more ExtraltemCode.
ExtraltemCode	Conditional	string			Code from Reference data file. The amount of assistance provided by an organisation, measured in descriptive detail. Dependent upon the Service Types table in Appendix B.

4.4.3.1.1 SessionClient Node

Elements within each *SessionClient* node:

DEX Bulk File Upload Technical Specification

Element	Mandatory Conditional Optional	Data Type	Length	Format	Comments Validation Rules
ClientId	Mandatory	string			Provider's Client Id.
ParticipationCode	Optional	integer			Code from Reference data file
ClientReferralOutWithPurpose	Optional	XML			This will contain list of Referral nodes. If element is present in the XML, then at least one Referral must be provided.

4.4.3.1.1.1 Referral NodeElements within each *Referral* node:

Element	Mandatory Conditional Optional	Data Type	Length	Format	Comments Validation Rules
TypeCode	Mandatory	string			Code from Reference data file
PurposeCodes	Mandatory	XML			Must contain 1 or more PurposeCode nodes.
PurposeCode	Mandatory	string			Code from Reference data file

4.4.3.2 Session Node XML

Sample *Session* node XML with Schema validation rules:

```

<Session>
  <!--Mandatory.-->
  <SessionId>SSJoeBlog</SessionId>
  <!--Mandatory.-->
  <CaseId>CAJoeBlog</CaseId>
  <!--Mandatory and should be valid datetime-->
  <SessionDate>2014-07-30</SessionDate>
  <!--Mandatory. Values allowed intergers-->
  <ServiceTypeId>5</ServiceTypeId>
  <!--Mandatory. Values allowed integers between 0 - 999 -->
  <TotalNumberOfUnidentifiedClients>0</TotalNumberOfUnidentifiedClients>
  <!-- If provided. Values allowed decimals-->
  <FeesCharged>1.00</FeesCharged>
  <!--Not mandatory.-->
  <!--If element is present in the XML, then a value of true or false in lower case must be provided-->
  <InterpreterPresent>true</InterpreterPresent>
  <!--Not mandatory.-->
  <!--If element is present in the XML, Values allowed Int -->
  <TimeMinutes>10</TimeMinutes>
  <!--Not mandatory.-->
  <!--If element is present in the XML, Values allowed Int -->
  <TotalCost>10</TotalCost>
  <!--Not mandatory.-->
  <!--If element is present in the XML, Values allowed Int -->
  <Quantity>10</Quantity>
  <!--Not mandatory.-->
  <!--If element is present in the XML, then atleast 1 ExtraItem must be provided.-->
  <ExtraItems>
    <!-- 1 or more ExtraItem must be provided.-->
    <ExtraItem>BATHROOM</ExtraItem>
  </ExtraItems>
  <SessionClients>
    <SessionClient>
      <ClientId>CLJoeBlog</ClientId>
      <ParticipationCode>CLIENT</ParticipationCode>
      <!--Not mandatory.-->
      <!--If element is present in the XML, then atleast 1 Referral must be provided.-->
      <ClientReferralOutWithPurpose>
        <Referral>
          <!--Mandatory.-->
          <TypeCode>EXTERNAL</TypeCode>
          <!--Mandatory.-->
          <PurposeCodes>
            <!-- 1 or more Purpose must be provided.-->
            <PurposeCode>HOUSING</PurposeCode>
            <PurposeCode>PHYSICAL</PurposeCode>
          </PurposeCodes>
        </Referral>
        <Referral>
          <!--Mandatory.-->
          <TypeCode>INTERNAL</TypeCode>
          <!--Mandatory.-->
          <PurposeCodes>
            <!-- 1 or more Purpose must be provided.-->
            <PurposeCode>PERSONAL</PurposeCode>
            <PurposeCode>PHYSICAL</PurposeCode>
          </PurposeCodes>
        </Referral>
      </ClientReferralOutWithPurpose>
    </SessionClient>
  </SessionClients>
</Session>

```

4.4.4 SessionAssessments

SessionAssessments node must contain of 1 or more *SessionAssessment* nodes. Each *SessionAssessment* node contains assessments for a session.

4.4.4.1 SessionAssessment Node

Elements within *SessionAssessment* node:

Element	Mandatory Conditional Optional	Data Type	Length	Format	Comments Validation Rules
Caseld	Mandatory	string			Provider's Case Id
SessionId	Mandatory	string			Provider's Session Id Combination of Caseld and SessionId is used to identify the Session to which assessments are added or updated.
Assessments	Mandatory	XML			Must contain 1 or maximum of 2 Assessment nodes for the Session.

4.4.4.1.1 Assessment Node

It represents a single Assessment. Elements within *Assessment* node:

Element	Mandatory Conditional Optional	Data Type	Length	Format	Comments Validation Rules
ScoreTypeCode	Mandatory	string			Code from Reference data file. Same combination of ScoreTypeCode and AssessmentPhaseCode must not exist for any other Assessment in the same Assessments node.
AssessmentPhaseCode	Mandatory	string			Code from Reference data file.
Scores	Mandatory	XML			Must contain at least 1 ScoreCode.
ScoreCode	Mandatory	string			Code from Reference data file.

4.4.4.2 SessionAssessment Node XML

Sample *SessionAssessment* node XML with Schema validation rules:

```

<SessionAssessment>
  <!--Mandatory.-->
  <CaseId>CAJoeBlog</CaseId>
  <!--Mandatory.-->
  <SessionId>SSJoeBlog</SessionId>
  <!--Mandatory.-->
  <Assessments>
    <!-- 1 or more Assessment must be provided.-->
    <Assessment>
      <!--Mandatory.-->
      <ScoreTypeCode>GROUP</ScoreTypeCode>
      <!--Mandatory.-->
      <AssessmentPhaseCode>POST</AssessmentPhaseCode>
      <!--Mandatory.-->
      <Scores>
        <!-- 1 or more ScoreCode must be provided.-->
        <ScoreCode>GROUPNETWORKS1</ScoreCode>
        <ScoreCode>GROUPSKILLS2</ScoreCode>
      </Scores>
    </Assessment>
  </Assessments>
</SessionAssessment>

```

4.4.5 ClientAssessments

ClientAssessments node must contain of 1 or more *ClientAssessment* nodes. Each *ClientAssessment* node contains assessments of a client who attended the session.

4.4.5.1 ClientAssessment Node

Elements within *ClientAssessment* node:

Element	Mandatory Conditional Optional	Data Type	Length	Format	Comments Validation Rules
ClientId	Mandatory	string			Provider's Client Id
CaseId	Mandatory	string			Provider's Case Id
SessionId	Mandatory	string			Provider's Session Id Combination of ClientId, CaseId and SessionId is used to identify the client to which assessments are added or updated.
Assessments	Mandatory	XML			Must contain 1 or more Assessment nodes.

4.4.5.1.1 Assessment Node

Same as Assessment Node above.

4.4.5.2 ClientAssessment Node XML

Sample *ClientAssessment* node XML with Schema validation rules:

```

<ClientAssessment>
  <!--Mandatory.-->
  <ClientId>CLJoeBlog</ClientId>
  <!--Mandatory.-->
  <CaseId>CAJoeBlog</CaseId>
  <!--Mandatory.-->
  <SessionId>SSJoeBlog</SessionId>
  <!--Mandatory.-->
  <Assessments>
    <!-- 1 or more Assessment must be provided.-->
    <Assessment>
      <!--Mandatory.-->
      <ScoreTypeCode>CIRCUMSTANCES</ScoreTypeCode>
      <!--Mandatory.-->
      <AssessmentPhaseCode>PRE</AssessmentPhaseCode>
      <!--Mandatory.-->
      <Scores>
        <!-- 1 or more ScoreCode must be provided.-->
        <ScoreCode>AGE1</ScoreCode>
      /Scores>
    </Assessment>
  </Assessments>
</ClientAssessment>

```

5 Error Processing

Service providers will have the facility to download an error file for their submissions. Service providers are able to view the errors in the error file, fix the errors in their source system, and upload another file with contains the fixed records for processing.

5.1 View Uploaded Files

Service providers can go to page “View uploaded files” in DEX Web Portal. This page displays the list of all the files uploaded by the service provider within the same organisation. Service provider can expand the row of the grid where the Status is “Failed”, and can download an error file for their submissions.

Example of View uploaded file with one row expanded to download error file:

The screenshot displays the 'View uploaded files' interface. At the top right, there is a 'Show' dropdown set to '10' and a 'GO' button. The table below has the following columns: File, Uploaded on, Uploaded by, and Status. The third row is expanded to show a 'Failed' status and an 'Error report' link.

File	Uploaded on	Uploaded by	Status
DEXFileUpload_Sample_D ev.xml	22/09/2014 10:51:52 AM	sit_WX241348@development.local	Successful
DEXFileUpload_Sample_D ev.xml	22/09/2014 10:50:51 AM	sit_WX241348@development.local	Successful
DEXFileUpload_Sample_D ev.xml	22/09/2014 10:49:41 AM	sit_WX241348@development.local	Failed
Comments: Error report: DEXFileUpload_Sample_Dev.xml.csv			
DEXFileUpload_Sample_D ev.xml	22/09/2014 10:48:25 AM	sit_WX241348@development.local	Failed
DEXFileUpload_Sample.xml	22/09/2014 10:43:54 AM	sit_WX241348@development.local	Failed
DEXFileUpload_Sample.xml	22/09/2014 10:39:47 AM	sit_WX241348@development.local	Failed
DEXFileUpload.xml	22/09/2014 10:39:23 AM	sit_WX241348@development.local	Failed
DEXFileUpload_Sample.xml	19/09/2014 2:51:23 PM	sit_WX241348@development.local	Failed
DEXFileUpload_Sample.xml	19/09/2014 1:55:06 PM	sit_WX241348@development.local	Successful
DEXFileUpload.xml	19/09/2014 12:17:34 PM	sit_WX241348@development.local	Successful

At the bottom of the table, there is a pagination control with 'Previous', '1', '2', '3', '4', '5', and 'Next' buttons.

5.2 Error Report File Format

5.2.1 Format

The file format of the error file will be CSV. This format allows users to open the error file directly into their preferred tool (i.e. MS Excel, Office, etc.) in their desktop, facilitating the task to identify and fix errors.

5.2.2 Error Report File Details

The output file will be populated with entities that were imported in error and were not accepted as a valid entity by the system.

5.2.3 Error Report File Definition

Header Row: **Field Names**

Children Rows (repeated): **One row per entity error**

5.2.3.1 Elements within each Entity Node

Element	Data Type	Description
Entity Type	string	Entity type will give details about, as to which entity DEX System was creating, which gave an error. The entity type can be Client, Case, Session, SessionAssessment and ClientAssessment
Parent Entity Details	string	This field will give information about the parent entity for which the child was created. E.g. if session entity is created, then this will give information about, against which case, the session was created. As case is the parent entity of session.
Entity Id	string	Provider's Id
Error Description	string	This field will give details about the error message

5.2.3.2 Output File Example (An error with each entity type)

Entity Type	Parent Entity Details	Entity Id	Error Description
Session	CaseId: CA00020	SomeSessionId1	Client Id CLB00015 not found.
ClientAssessment	ClientId: CLB00015 - CaseId: CA00010 - SessionId: SS00010		Session Id SS00010 not found
Client		SomeClientId1	Migration month of arrival is required when migration year of arrival is provided.
Case		SomeCaseId1	Parenting Agreement outcome cannot be provided for this outcome activity.
Session Assessment	CaseId: CA00010 - SessionId: SS00010		Session Id SS00010 not found

6 Appendix A. Sample XML

The following is the sample of XML file with Client, Case, Session, Session Assessment and Client Assessment. It also contains the Schema validation rules for each element.

```
<?xml version="1.0" encoding="utf-8" ?>
<!--At least 1 of the Clients or Cases or Sessions or ClientAssessments or SessionAssessments elements is required.-->
<DEXFileUpload>
<!--Not mandatory.-->
<!--If element is present in the XML, then at least 1 Client must be provided.-->
<Clients>
  <Client>
    <!--Mandatory.-->
    <ClientId>CLJoeBlog</ClientId>
    <!--Not mandatory.-->
    <!--If element is present in the XML, then a value must be provided.-->
    <Slk>L020E010120141</Slk>
    <!--Mandatory. Values allowed true or false in lower case.-->
    <ConsentToProvideDetails>true</ConsentToProvideDetails>
    <!--Mandatory. Values allowed true or false in lower case.-->
    <ConsentedForFutureContacts>true</ConsentedForFutureContacts>
    <!--Not mandatory.-->
    <!--If element is present in the XML, then a value must be provided.-->
    <GivenName>Joe</GivenName>
    <!--Not mandatory.-->
    <!--If element is present in the XML, then a value must be provided.-->
    <FamilyName>Blog</FamilyName>
    <!--Mandatory. Values allowed true or false in lower case.-->
    <IsUsingPsuedonym>>false</IsUsingPsuedonym>
    <!--Mandatory. Must be in a valid datetime.-->
    <BirthDate>2014-02-24</BirthDate>
    <!--Mandatory. Values allowed true or false in lower case.-->
    <IsBirthDateAnEstimate>>false</IsBirthDateAnEstimate>
    <!--Mandatory.-->
    <GenderCode>MALE</GenderCode>
    <!--Mandatory.-->
    <CountryOfBirthCode>1101</CountryOfBirthCode>
    <!--Mandatory.-->
    <LanguageSpokenAtHomeCode>1201</LanguageSpokenAtHomeCode>
    <!--Mandatory.-->
    <AboriginalOrTorresStraitIslanderOriginCode>NO</AboriginalOrTorresStraitIslanderOriginCode>
    <!--Mandatory. Values allowed true or false in lower case.-->
    <HasDisabilities>true</HasDisabilities>
    <!--Not mandatory.-->
    <!--If element is present in the XML, then at least 1 DisabilityCode must be provided.-->
    <Disabilities>
      <DisabilityCode>Physical</DisabilityCode>
    </Disabilities>
    <!--Not mandatory. If element is present in the XML, then a value must be provided -->
    <AccommodationTypeCode>BOARDING</AccommodationTypeCode>
    <!--Not mandatory. If element is present in the XML, then a value must be provided -->
    <DVACardStatusCode>BOARDING</DVACardStatusCode>
    <!--Not mandatory, If element is present in the XML, Values allowed true or false in lower case.-->
    <HasCarer>BOARDING</HasCarer>
    <ResidentialAddress>
      <!--Not mandatory.-->
      <!--If element is present in the XML, then a value must be provided.-->
      <AddressLine1>Unit 1 </AddressLine1>
      <!--Not mandatory.-->
      <!--If element is present in the XML, then a value must be provided.-->
      <AddressLine2>3 xyz street</AddressLine2>
      <!--Mandatory.-->
      <Suburb>Sydney</Suburb>
      <!--Mandatory.-->
      <StateCode>NSW</StateCode>
      <!--Mandatory and must be 4 numerical characters.-->
      <Postcode>2000</Postcode>
    </ResidentialAddress>
  </Client>
</Clients>
</DEXFileUpload>
```

```

</ResidentialAddress>
<!--Not mandatory.-->
<!--If element is present in the XML, then a value of true or false must be provided.-->
<IsHomeless>true</IsHomeless>
<!--Not mandatory.-->
<!--If element is present in the XML, then a value must be provided.-->
<HouseholdCompositionCode>GROUP</HouseholdCompositionCode>
<!--Not mandatory.-->
<!--If element is present in the XML, then a value must be provided.-->
<MainSourceOfIncomeCode>NIL</MainSourceOfIncomeCode>
<!--Not mandatory.-->
<!--If element is present in the XML, then a value must be provided.-->
<IncomeFrequencyCode>FORTNIGHTLY</IncomeFrequencyCode>
<!--Not mandatory.-->
<!--If element is present in the XML, then a value must be provided.-->
<IncomeAmount>1</IncomeAmount>
<!--Not mandatory.-->
<!--If element is present in the XML, then a value must be provided.-->
<FirstArrivalYear>2014</FirstArrivalYear>
<!--Not mandatory.-->
<!--If element is present in the XML, then a valid value (Month) must be provided.-->
<FirstArrivalMonth>February</FirstArrivalMonth>
<!--Not mandatory.-->
<!--If element is present in the XML, then a value must be provided.-->
<MigrationVisaCategoryCode>SKILLED</MigrationVisaCategoryCode>
<!--Not mandatory.-->
<!--If element is present in the XML, then a value must be provided.-->
<AncestryCode>1103</AncestryCode>
</Client>
</Clients>

<!--Not mandatory.-->
<!--If element is present in the XML, then at least 1 Case must be provided.-->
<Cases>
  <Case>
    <!--Mandatory.-->
    <CaseId>CAJoeBlog</CaseId>
    <!--Mandatory. Values allowed integers-->
    <OutletActivityId>12</OutletActivityId>
    <!--Mandatory. Values allowed integers between 0 - 999 -->
    <TotalNumberOfUnidentifiedClients>0</TotalNumberOfUnidentifiedClients>
    <!--Not mandatory.-->
    <!--If element is present in the XML, then at least 1 Client must be provided.-->
    <CaseClients>
      <CaseClient>
        <!--Mandatory.-->
        <ClientId>CLJoeBlog</ClientId>
        <!--Not mandatory.-->
        <!--If element is present in the XML, then a value must be provided.-->
        <ReferralSourceCode>CENTRELINK</ReferralSourceCode>
        <!--Not mandatory.-->
        <!--If element is present in the XML, then atleast 1 ReasonForAssistance must be provided.-->
        <ReasonsForAssistance>
          <ReasonForAssistance>
            <!--Mandatory.-->
            <ReasonForAssistanceCode>FAMILY</ReasonForAssistanceCode>
            <!--Mandatory. Values allowed true or false in lower case-->
            <IsPrimary>true</IsPrimary>
          </ReasonForAssistance>
          <ReasonForAssistance>
            <!--Mandatory.-->
            <ReasonForAssistanceCode>MATERIAL</ReasonForAssistanceCode>
            <!--Mandatory. Values allowed true or false in lower case-->
            <IsPrimary>false</IsPrimary>
          </ReasonForAssistance>
        </ReasonsForAssistance>
        <!--Not mandatory.-->
        <!--If element is present in the XML, then a value must be provided.-->
        <ExitReasonCode>MOVED</ExitReasonCode>
      </CaseClient>
    </CaseClients>
    <!--Not mandatory.-->
    <!--If element is present in the XML, then data must be provided.-->
    <ParentingAgreementOutcome>

```

```

<!--Mandatory.-->
<ParentingAgreementOutcomeCode>FULL</ParentingAgreementOutcomeCode>
<!--Mandatory.-->
<DateOfParentingAgreement>2014-07-30</DateOfParentingAgreement>
<!--Mandatory.-->
<DidLegalPractitionerAssistWithFormalisingAgreement>true
</DidLegalPractitionerAssistWithFormalisingAgreement>
</ParentingAgreementOutcome>
<!--Not mandatory.-->
<!--If element is present in the XML, then data must be provided.-->
<Section60I>
  <!--Mandatory.-->
  <Section60ICertificateTypeCode>GENUINE</Section60ICertificateTypeCode>
  <!--Mandatory.-->
  <DateIssued>2014-07-30</DateIssued>
</Section60I>
</Case>
</Cases>

<!--Not mandatory.-->
<!--If element is present in the XML, then at least 1 Session must be provided.-->
<Sessions>
  <Session>
    <!--Mandatory.-->
    <SessionId>SSJoeBlog</SessionId>
    <!--Mandatory.-->
    <CaseId>CAJoeBlog</CaseId>
    <!--Mandatory and should be valid datetime-->
    <SessionDate>2014-07-30</SessionDate>
    <!--Mandatory. Values allowed intergers-->
    <ServiceTypeId>5</ServiceTypeId>
    <!--Mandatory. Values allowed integers between 0 - 999 -->
    <TotalNumberOfUnidentifiedClients>0</TotalNumberOfUnidentifiedClients>
    <!-- If provided. Values allowed decimals-->
    <FeesCharged>1.00</FeesCharged>
    <!--Not mandatory.-->
    <!--If element is present in the XML, then a value of true or false in lower case must be provided-->
    <InterpreterPresent>true</InterpreterPresent>
    <SessionClients>
      <SessionClient>
        <ClientId>CLJoeBlog</ClientId>
        <ParticipationCode>CLIENT</ParticipationCode>
        <!--Not mandatory.-->
        <!--If element is present in the XML, then atleast 1 Referral must be provided.-->
        <ClientReferralOutWithPurpose>
          <Referral>
            <!--Mandatory.-->
            <TypeCode>EXTERNAL</TypeCode>
            <!--Mandatory.-->
            <PurposeCodes>
              <!-- 1 or more Purpose must be provided.-->
              <PurposeCode>HOUSING</PurposeCode>
              <PurposeCode>PHYSICAL</PurposeCode>
            </PurposeCodes>
          </Referral>
          <Referral>
            <!--Mandatory.-->
            <TypeCode>INTERNAL</TypeCode>
            <!--Mandatory.-->
            <PurposeCodes>
              <!-- 1 or more Purpose must be provided.-->
              <PurposeCode>PERSONAL</PurposeCode>
              <PurposeCode>PHYSICAL</PurposeCode>
            </PurposeCodes>
          </Referral>
        </ClientReferralOutWithPurpose>
      </SessionClient>
    </SessionClients>
  </Session>
</Sessions>

<!--Not mandatory.-->
<!--If element is present in the XML, then at least 1 SessionAssessment must be provided.-->
<SessionAssessments>

```



```

<SessionAssessment>
  <!--Mandatory.-->
  <CaseId>CAJoeBlog</CaseId>
  <!--Mandatory.-->
  <SessionId>SSJoeBlog</SessionId>
  <!--Mandatory.-->
  <Assessments>
    <!-- 1 or more Assessment must be provided.-->
    <Assessment>
      <!--Mandatory.-->
      <ScoreTypeCode>GROUP</ScoreTypeCode>
      <!--Mandatory.-->
      <AssessmentPhaseCode>POST</AssessmentPhaseCode>
      <!--Mandatory.-->
      <Scores>
        <!-- 1 or more ScoreCode must be provided.-->
        <ScoreCode>GROUPNETWORKS1</ScoreCode>
        <ScoreCode>GROUPSKILLS2</ScoreCode>
      </Scores>
    </Assessment>
  </Assessments>
</SessionAssessment>
</SessionAssessments>

<!--Not mandatory.-->
<!--If element is present in the XML, then at least 1 ClientAssessment must be provided.-->
<ClientAssessments>
  <ClientAssessment>
    <!--Mandatory.-->
    <ClientId>CLJoeBlog</ClientId>
    <!--Mandatory.-->
    <CaseId>CAJoeBlog</CaseId>
    <!--Mandatory.-->
    <SessionId>SSJoeBlog</SessionId>
    <!--Mandatory.-->
    <Assessments>
      <!-- 1 or more Assessment must be provided.-->
      <Assessment>
        <!--Mandatory.-->
        <ScoreTypeCode>CIRCUMSTANCES</ScoreTypeCode>
        <!--Mandatory.-->
        <AssessmentPhaseCode>PRE</AssessmentPhaseCode>
        <!--Mandatory.-->
        <Scores>
          <!-- 1 or more ScoreCode must be provided.-->
          <ScoreCode>AGE1</ScoreCode>
        </Scores>
      </Assessment>
    </Assessments>
  </ClientAssessment>
</ClientAssessments>
</DEXFileUpload>

```

7 Appendix B. Activity Specific Requirements

List of applicable Codes for a service type is available from Outlets and Programme activities data file

Code	Related to entity and property	Description
ACCOMMODATION TYPE	Client, AccomodationTypeCode	If a Client is associated to a Case where its activity specifies this code, then "AccomodationTypeCode" property on the Client is required and must be supplied with a valid value. This also implies that Clients will not be accepted on a session with in that case.
DVACARDSTATUS	Client: DVACardStatusCode	If a Client is associated to a Case where its activity specifies this code, then "DVACardStatusCode" property on the Client is required and must be supplied with a valid value. This also implies that Clients will not be accepted on a session with in that case.
HOUSEHOLDMANDATORY	Client: HouseholdCompositionCode	If a Client is associated to a Case where its activity specifies this code, then "HouseholdCompositionCode" property on the Client is required and must be supplied with a valid value. This also implies that Clients will not be accepted on a session with in that case.
HASCARER	Client: HasCarer	If a Client is associated to a Case where its activity specifies this code, then "HasCarer" property on the Client is required and must be supplied with a valid value. This also implies that Clients will not be accepted on a session with in that case.
AGDTYPE	Case: ParentingAgreementOutcome: ParentingAgreementOutcomeCode, DateOfParentingAgreement, DidLegalPractitionerAssistWithFormalisingAgreement Section60I: Section60ICertificateTypeCode DateIssued Session: FeesCharged	When applied to an Activity, "ParentingAgreementOutcomeCode", "DateOfParentingAgreement", "DidLegalPractitionerAssistWithFormalisingAgreement", "Section60ICertificateTypeCode" and "DateIssued" properties on Case and "FeesCharged" property on Session can be supplied.
EXITCASE	Case Client: ExitReasonCode	When applied to an Activity, "ExitReasonCode" property for the Case Client can be supplied

8 Appendix C. Service Type Specific Requirements

List of applicable Codes for a service type is available from Outlets and Programme activities data file.

Code	Related entity and property	Description
ASSISTANCECOSTAMOUNT	Session, TotalCost	When applied to a service type "TotalCost" property on session is required and must be supplied with valid values to record a new session or update an existing session.
ASSISTANCEITEM	Session, Extraltems	When applied to a service type " Extraltems " property on session is required and must be supplied with a valid value to record a new session or update an existing session.
ASSISTANCEMINUTES	Session, Time	When applied to a service type "Time" property on session is required and must be supplied with a valid value to record a new session or update an existing session.
ASSISTANCEQUANTITY	Session, Quantity	When applied to a service type "Quantity" property on session is required and must be supplied with a valid value to record a new session or update an existing session.
WORKSHOP	Session, MoneyBusinessCommunityEducationWorkshopCode	When applied to a service type " MoneyBusinessCommunityEducationWorkshopCode" property on session is required and must be supplied with a valid values to record a new session or update an existing session.
ASSISTANCEITEM	Session, Extraltems	When applied to a service type "Extraltems" property on session is required and must be supplied with a valid value to record a new session or update an existing session.