

# SAFE & SUPPORTED

THE NATIONAL FRAMEWORK FOR PROTECTING AUSTRALIA'S CHILDREN 2021 - 2031

2843.11.22

## Fact sheet - Safe and Supported: First Action Plan 2023 - 2026

### What is the First Action Plan?

The Australian Government, state and territory governments, First Nations representatives and the non-government sector are working together through *Safe and Supported: the National Framework for Protecting Australia's Children 2021-2031 (Safe and Supported)* towards the shared goal of making significant and sustained progress in reducing the rate of child abuse and neglect and its intergenerational impacts.

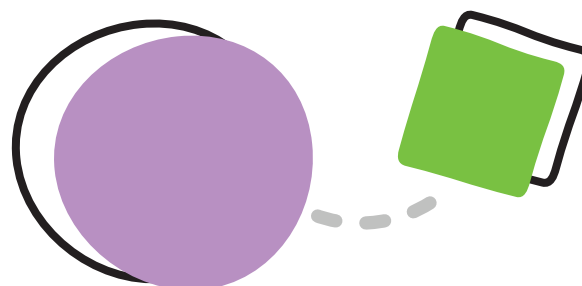
The First Action Plan is one of two action plans. It outlines how all Australian governments will work in partnership with Aboriginal and Torres Strait Islander leaders, and in consultation with the non-government sector through the National Coalition on Child Safety and Wellbeing Steering Group, to deliver on the vision of Safe and Supported and address the needs of all children. Its targeted approach focuses on children and families who are experiencing disadvantage and/or are vulnerable. This includes an emphasis on the four Priority Groups under Safe and Supported:

- children and families with multiple and complex needs
- Aboriginal and Torres Strait Islander children and young people experiencing disadvantage or who are vulnerable

- children and young people and/or parents/carers with disability experiencing disadvantage or who are vulnerable
- children and young people who have experienced abuse and/or neglect including children in out-of-home care, and young people leaving out of home care and transitioning to adulthood.

### How will Aboriginal and Torres Strait Islander families and children be supported?

The First Action Plan is complemented by the Aboriginal and Torres Strait Islander First Action Plan. This contains dedicated strategies and actions to achieve the Closing the Gap Target 12, to reduce over-representation of Aboriginal and Torres Strait Islander children in out-of-home care. This recognises that Aboriginal and Torres Strait Islander children and families have unique rights, strengths and needs that must be considered in implementing both Action Plans (for more information see the Aboriginal and Torres Strait Islander First Action Plan 2023-2026).



## What will the First Action Plan do?

The First Action Plan sets out 8 actions for all parties to focus their collective effort on:

Action 1	Action 2	Action 3	Action 4
<p><b>Early Supports</b></p> <p>Address the social determinants of child safety and wellbeing through early and targeted support and improved access to services for vulnerable children and families.</p>	<p><b>Data and Research</b></p> <p>Establish a national coordinated data and research approach.</p>	<p><b>Workforce</b></p> <p>Agree a national approach or strategy for a sustainable and skilled children and families services workforce.</p>	<p><b>Listening to Experience</b></p> <p>Embed the voice of the child and living experience in program and policy design in the context of Safe and Supported implementation.</p>
<ul style="list-style-type: none"> <li>a. Explore new partnerships for place-based initiatives.</li> <li>b. Strengthen interface with other portfolios.</li> <li>c. Support a holistic response to Closing the Gap targets.</li> </ul>	<ul style="list-style-type: none"> <li>a. Review national reporting.</li> <li>b. Streamline national reporting.</li> <li>c. Identify key data requirements for the Monitoring and Evaluation Strategy.</li> <li>d. Build Aboriginal and Torres Strait Islander data sovereignty and improve the evidence base.</li> </ul>	<ul style="list-style-type: none"> <li>a. Scope needs of sector.</li> <li>b. Develop sustainable workforce strategies.</li> <li>c. Support capacity building.</li> <li>d. Scope national accreditation of child and family sector workforce.</li> </ul>	<ul style="list-style-type: none"> <li>a. Develop and enhance mechanisms for feedback and listening to children, young people and those who care for them.</li> </ul>
Action 5	Action 6	Action 7	Action 8
<p><b>Out of Home Care</b></p> <p>Improve lifetime outcomes for children and young people in and leaving out-of-home care through strategies that support proactive access to universal services.</p>	<p><b>Carers</b></p> <p>Improve support for carers.</p>	<p><b>Disability</b></p> <p>Ensure effective and timely responses for parents and carers living with disability and children and young people with disability and/or developmental concerns.</p>	<p><b>ATSICPP</b></p> <p>Implement the Aboriginal and Torres Strait Islander Child Placement Principle (ATSICPP) to the standard of active efforts.</p>
<ul style="list-style-type: none"> <li>a. Improve education and employment pathways.</li> <li>b. Review the Transition to Independent Living Allowance.</li> <li>c. Improve access to universal services.</li> <li>d. Refresh the National Out-of-Home Care Standards.</li> </ul>	<ul style="list-style-type: none"> <li>a. Improve coordination of supports for carers.</li> <li>b. Promote supports to strengthen parenting practices.</li> </ul>	<ul style="list-style-type: none"> <li>a. Ensure an effective interface between child and family services and the National Disability Insurance Agency.</li> <li>b. Improve pathways to disability services.</li> </ul>	<ul style="list-style-type: none"> <li>a. Enhance government and sector's capacity to implement all 5 elements of the ATSICPP.</li> </ul>

## What will we achieve?

The table below outlines Safe and Supported’s 10-Year Outcomes. These include changes we wish to see in the lives of children, young people and families, including parents and carers, as well as changes in the design and delivery of the services and systems they use.

Child and Family Level	Service and System Level
<p><b>S*1(a):</b> Children and young people grow up in safe and nurturing homes, supported by strong families and communities.</p> <p><b>S3(a):</b> Children, young people and families, and their experiences, are accurately represented in the evidence about them.</p> <p><b>S4(a):</b> Children, young people and families have their needs met by an effective and skilled workforce.</p>	<p><b>S1(b):</b> Systems and services prioritise resourcing, strengthening and supporting families to stay safe together.</p> <p><b>S3(b):</b> Child and family support policies and services are consistently based on reliable evidence, including living experience.</p> <p><b>S4(b):</b> The child and family support system has the capacity to respond effectively and adapt to meet future demand.</p>

\*S means ‘Safe and Supported’ and refers to outcomes in the Safe and Supported Outcomes Framework.

Specific outcomes for Aboriginal and Torres Strait Islander children, young people and families are outlined in the Aboriginal and Torres Strait Islander Outcomes Framework (for more information see the Aboriginal and Torres Strait Islander First Action Plan 2023-2026).

All parties under Safe and Supported will also collaborate with a broad range of policy and programs areas (e.g. health, education) to achieve outcomes that cross over with these areas, including the following 10-Year Outcome.

**S5(a):** Children, young people, families and communities have their holistic needs fulfilled. As such, fewer families experience social, emotional and economic risk factors for child abuse and neglect.

Progress under Safe and Supported will be assessed through regular monitoring and reporting under the Monitoring and Evaluation Strategy.

## Where can I find out more?

Safe and Supported, the Action Plans, Outcomes Frameworks, and Monitoring and Evaluation Strategy can all be found on the [Australian Government Department of Social Services’ website](#).

