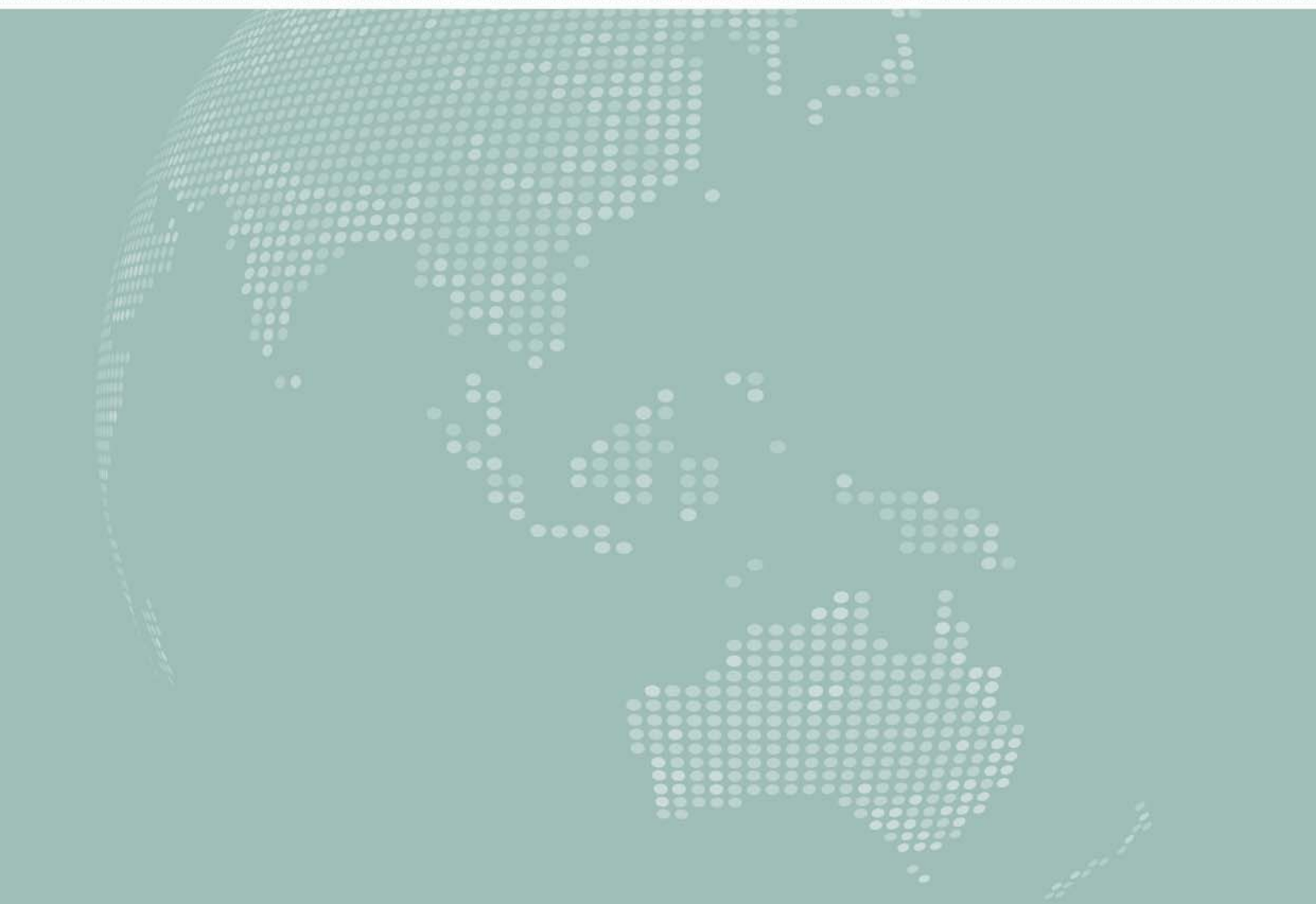
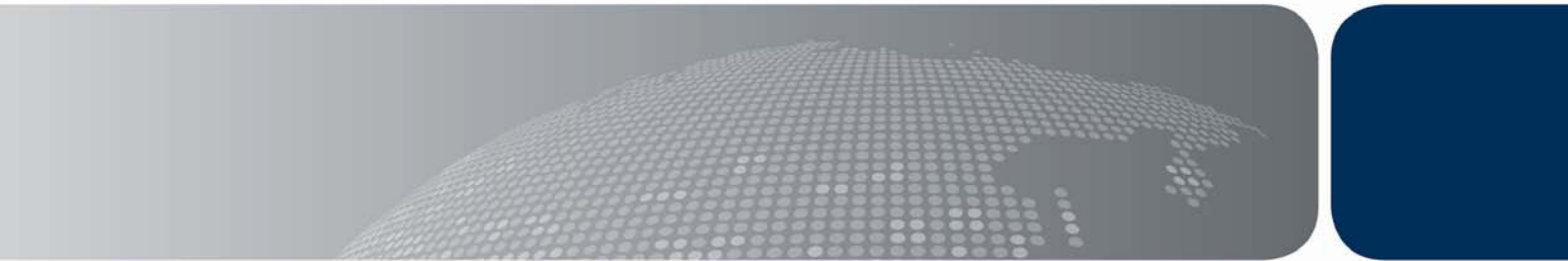




Australian Government
**Department of Immigration
and Citizenship**

Settler Arrivals

2008-2009



Settler Arrivals
1998-99 to 2008-09
Australia
States and territories

© Commonwealth of Australia 2009

ISSN 1034-5051

This work is copyright. You may download, display, print and reproduce this material in unaltered form only (retaining this notice) for your personal, non-commercial use or use within your organisation. Apart from any use as permitted under the *Copyright Act 1968*, all other rights are reserved.

Requests for further authorisation should be directed to the:
Commonwealth Copyright Administration,
Copyright Law Branch,
Attorney-General's Department
Robert Garran Offices
National Circuit
Barton ACT 2600

Fax: 02 6250 5989
Email: commonwealth.copyright@ag.gov.au.

Prepared by Principal Adviser Migration Strategies.

Published by the Department of Immigration and Citizenship
6 Chan Street Belconnen ACT 2617

Table of contents

Contents

List of graphs

Figure 1	States and territories of intended residence 1989-90 to 2008-09 as a percentage of total settler arrivals	1
----------	---	---

Tables

Australia		3
Table 1.1	States and territories of intended residence, settler arrivals 1985-86 to 2008-09	3
Table 1.2	Settler arrivals by birthplace, 1998-99 to 2008-09	4
Table 1.3	Settler arrivals by state or territory of intended residence and sex, 1995-96 to 2008-09	11
Table 1.4	Permanent movements by age, 1995-96 to 2008-09	12
Table 1.5	Settler arrivals by eligibility category, 1998-99 to 2008-09	13
Table 1.6	Settler arrivals by eligibility category and state or territory of intended residence, 1996-97 to 2008-09	14
New South Wales		16
Table 2.1	Settler arrivals by birthplace, 1998-99 to 2008-09	16
Victoria		23
Table 3.1	Settler arrivals by birthplace, 1998-99 to 2008-09	23
Queensland		30
Table 4.1	Settler arrivals by birthplace, 1998-99 to 2008-09	30
South Australia		37
Table 5.1	Settler arrivals by birthplace, 1998-99 to 2008-09	37
Western Australia		43
Table 6.1	Settler arrivals by birthplace, 1998-99 to 2008-09	43
Tasmania		49
Table 7.1	Settler arrivals by birthplace, 1998-99 to 2008-09	49

Northern Territory	53
Table 8.1 Settler arrivals by birthplace, 1998-99 to 2008-09	53
Australian Capital Territory	57
Table 9.1 Settler arrivals by birthplace, 1998-99 to 2008-09	57
Explanatory notes	62
Country classification (based on SACC)	65
Statistical publications	68

Figure 1 States and territories of intended residence 1989-90 to 2008-09 as a percentage of total settler arrivals

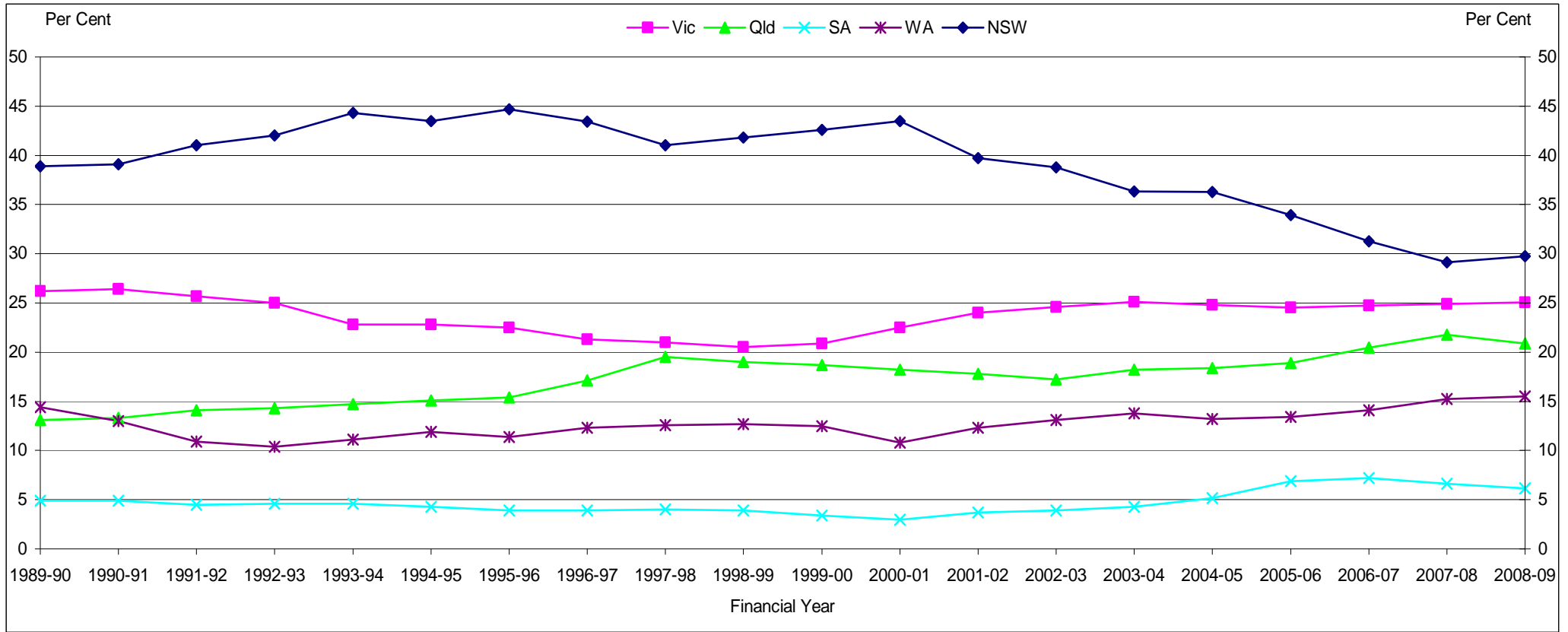


Figure 1 (continued) States and territories of intended residence 1989-90 to 2008-09 as a percentage of total settler arrivals

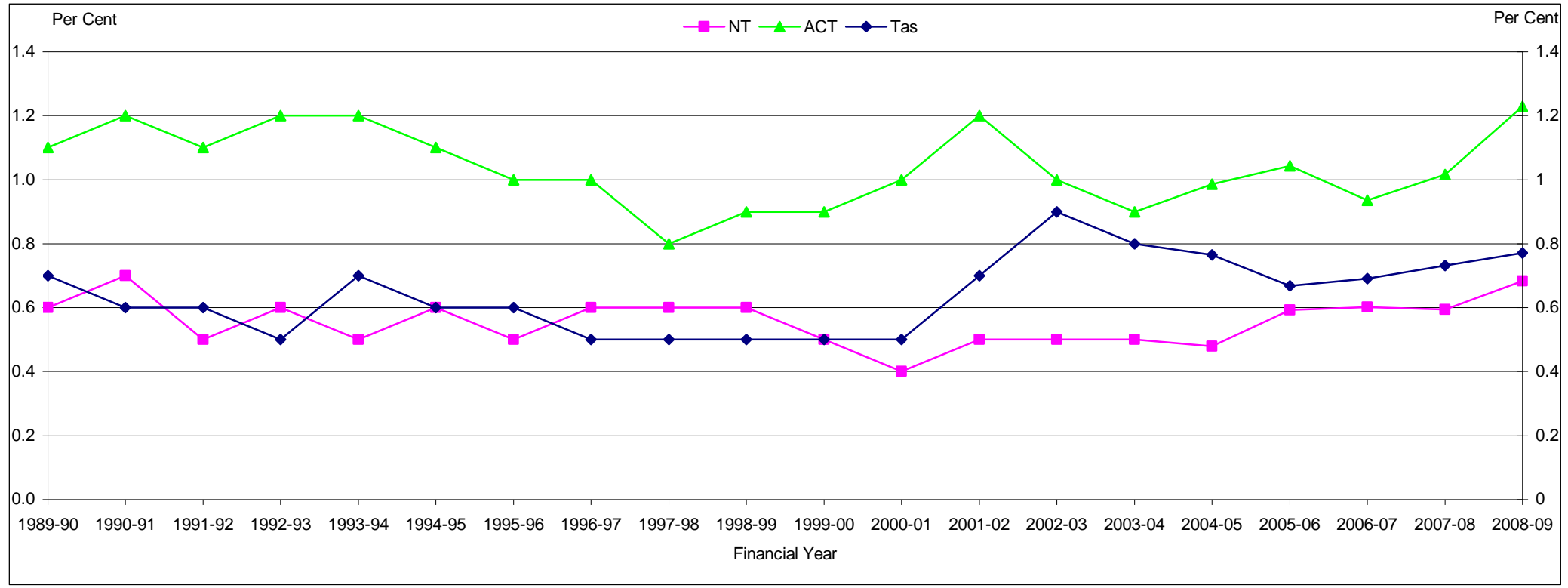


Table 1.1 States and territories of intended residence, settler arrivals 1985-86 to 2008-09

Financial Year	NSW	%	Vic	%	Qld.	%	SA	%	WA	%	Tas	%	NT	%	ACT	%	Total (a)
1985-86	36 760	39.8	23 848	25.8	11 772	12.7	4 923	5.3	11 572	12.5	948	1.0	1 045	1.1	1 358	1.5	92 410
1986-87	45 569	40.2	29 007	25.6	14 042	12.4	5 701	5.0	15 710	13.9	938	0.8	941	0.8	1 401	1.2	113 309
1987-88	57 286	39.9	35 050	24.4	20 988	14.6	6 278	4.4	20 054	14.0	1 015	0.7	1 053	0.7	1 766	1.2	143 490
1988-89	56 065	38.6	35 024	24.1	21 780	15.0	6 867	4.7	22 278	15.3	846	0.6	927	0.6	1 523	1.0	145 316
1989-90	47 153	38.9	31 788	26.2	15 922	13.1	5 898	4.9	17 512	14.4	864	0.7	733	0.6	1 343	1.1	121 227
1990-91	47 569	39.1	32 071	26.4	16 243	13.3	5 963	4.9	15 819	13.0	709	0.6	825	0.7	1 488	1.2	121 688
1991-92	44 066	41.0	27 547	25.7	15 189	14.1	4 796	4.5	11 712	10.9	617	0.6	569	0.5	1 178	1.1	107 391
1992-93	32 093	42.0	19 053	25.0	10 939	14.3	3 534	4.6	7 928	10.4	401	0.5	426	0.6	949	1.2	76 330
1993-94	30 886	44.3	15 918	22.8	10 267	14.7	3 201	4.6	7 743	11.1	465	0.7	372	0.5	807	1.2	69 768
1994-95	38 056	43.5	19 968	22.8	13 179	15.1	3 782	4.3	10 379	11.9	552	0.6	496	0.6	1 001	1.1	87 428
1995-96	44 327	44.7	22 269	22.5	15 284	15.4	3 842	3.9	11 318	11.4	556	0.6	494	0.5	1 021	1.0	99 139
1996-97	37 212	43.4	18 266	21.3	14 640	17.1	3 336	3.9	10 518	12.3	431	0.5	490	0.6	833	1.0	85 752
1997-98	31 694	41.0	16 233	21.0	15 095	19.5	3 069	4.0	9 741	12.6	369	0.5	435	0.6	657	0.8	77 327
1998-99	35 141	41.8	17 291	20.5	16 028	19.0	3 320	3.9	10 672	12.7	442	0.5	474	0.6	763	0.9	84 143
1999-00	39 311	42.6	19 319	20.9	17 286	18.7	3 105	3.4	11 512	12.5	444	0.5	471	0.5	809	0.9	92 272
2000-01	46 745	43.5	24 159	22.5	19 535	18.2	3 183	3.0	11 565	10.8	564	0.5	472	0.4	1 115	1.0	107 366
2001-02	35 301	39.7	21 374	24.0	15 825	17.8	3 316	3.7	10 954	12.3	589	0.7	459	0.5	1 075	1.2	88 900
2002-03	36 431	38.8	23 109	24.6	16 182	17.2	3 657	3.9	12 279	13.1	811	0.9	483	0.5	957	1.0	93 914
2003-04	40 561	36.3	28 028	25.1	20 284	18.2	4 773	4.3	15 411	13.8	884	0.8	596	0.5	1 050	0.9	111 590
2004-05	44 746	36.3	30 581	24.8	22 660	18.4	6 364	5.2	16 318	13.2	944	0.8	592	0.5	1 217	1.0	123 424
2005-06	44 661	33.9	32 297	24.5	24 862	18.9	9 099	6.9	17 638	13.4	879	0.7	780	0.6	1 372	1.0	131 593
2006-07	43 835	31.3	34 698	24.8	28 640	20.4	10 061	7.2	19 783	14.1	968	0.7	843	0.6	1 311	0.9	140 148
2007-08	43 520	29.1	37 213	24.9	32 496	21.8	9 896	6.6	22 738	15.2	1 092	0.7	888	0.6	1 518	1.0	149 365
2008-09	47 030	29.8	39 559	25.0	33 029	20.9	9 695	6.1	24 463	15.5	1 219	0.8	1 079	0.7	1 942	1.2	158 021

(a) Includes not stated and Other Territories.

Australia

Table 1.2 Settler arrivals by birthplace, 1998-99 to 2008-09

Birthplace	1998-99	1999-00	2000-01	2001-02	2002-03	2003-04	2004-05	2005-06	2006-07	2007-08	2008-09
Oceania											
<i>Australia & External Territories (a)</i>	276	378	570	444	407	460	573	610	592	806	833
<i>New Zealand</i>	18 677	21 889	25 165	15 663	12 368	14 418	17 345	19 033	23 906	27 601	25 578
<i>Melanesia</i>											
New Caledonia	10	19	8	8	5	4	12	6	5	5	12
Papua New Guinea	126	84	140	124	216	192	182	215	226	256	240
Solomon Islands	36	44	27	32	18	29	43	16	35	24	25
Vanuatu	8	11	19	18	23	14	12	20	23	23	15
Total	180	158	194	182	262	239	249	257	289	308	292
<i>Micronesia</i>											
Guam	1	1	2	-	5	7	3	1	1	-	1
Kiribati	6	6	4	12	6	4	6	3	15	4	17
Marshall Islands	-	1	-	-	-	-	-	2	-	-	-
Micronesia Federated States	-	-	-	1	3	-	2	-	1	2	-
Nauru	3	2	7	13	8	6	9	6	7	2	7
Northern Mariana Islands	1	-	-	-	-	1	-	-	-	2	-
Palau	-	1	-	-	-	-	-	-	-	-	-
Micronesia nfd	-	1	-	-	-	-	-	-	-	-	-
Total	11	12	13	26	22	18	20	12	24	10	25
<i>Polynesia (excluding Hawaii)</i>											
Cook Islands	207	200	236	124	82	108	91	98	114	244	333
Fiji	1 561	1 856	2 150	1 608	1 609	1 603	1 736	1 830	1 492	1 794	1 824
French Polynesia	3	11	6	2	6	3	8	5	2	5	15
Niue	55	48	57	28	21	32	35	25	27	78	47
Samoa	1 167	1 074	1 295	756	506	665	747	594	415	637	814
Samoa American	10	12	10	12	4	10	11	9	3	18	7
Tokelau	19	19	30	32	15	28	26	31	14	30	26
Tonga	330	371	402	272	211	232	284	269	181	166	208
Tuvalu	4	11	6	3	4	3	6	4	2	-	8
Polynesia (excl Hawaii) nec	1	-	-	-	-	-	-	-	-	-	-
Total	3 357	3 602	4 192	2 837	2 458	2 684	2 944	2 865	2 250	2 972	3 282
Total Oceania	22 501	26 039	30 134	19 152	15 517	17 819	21 131	22 777	27 061	31 697	30 010
Europe											
<i>United Kingdom & Ireland</i>											
UK	8 785	9 201	9 037	8 749	12 508	18 272	18 220	23 290	23 223	23 236	21 545
Ireland	680	748	709	504	649	942	896	1 061	1 163	1 267	1 530
Total	9 465	9 949	9 746	9 253	13 157	19 214	19 116	24 351	24 386	24 503	23 075
<i>Western Europe</i>											
Austria	78	127	75	84	96	103	89	81	109	79	104
Belgium	52	59	66	68	91	67	77	68	69	97	67
France	237	219	202	253	313	351	323	300	312	305	329
Germany	738	781	801	697	759	806	844	953	963	996	936
Liechtenstein	-	-	-	2	-	1	-	-	1	-	-
Luxembourg	3	2	1	-	1	1	4	4	4	2	-
Monaco	1	-	-	1	2	-	-	2	-	-	1
Netherlands	344	438	407	427	397	432	471	523	548	577	510
Switzerland	183	208	181	180	216	183	198	232	155	234	181
Total	1 636	1 834	1 733	1 712	1 875	1 944	2 006	2 163	2 161	2 290	2 128

(a) The Australia component consists of persons born in Australia who have settled overseas and returned.

Australia

Table 1.2 (continued) Settler arrivals by birthplace, 1998-99 to 2008-09

Birthplace	1998-99	1999-00	2000-01	2001-02	2002-03	2003-04	2004-05	2005-06	2006-07	2007-08	2008-09
<i>Northern Europe</i>											
Denmark	80	80	104	114	88	97	103	93	90	85	77
Faroe Islands	-	-	-	-	1	-	-	-	1	-	-
Finland	45	30	51	42	34	52	54	67	52	65	53
Greenland	-	-	1	-	-	-	-	1	-	-	-
Iceland	3	3	4	2	1	4	3	-	12	7	4
Norway	24	41	30	25	56	55	53	69	61	48	53
Sweden	85	117	110	138	148	201	163	151	133	174	180
Total	237	271	300	321	328	409	376	381	349	379	367
<i>Southern Europe</i>											
Andorra	-	-	-	-	-	-	-	-	-	2	-
Gibraltar	9	3	1	1	2	3	7	4	6	10	3
Italy	197	168	181	267	139	186	195	187	204	180	205
Malta	40	41	40	28	54	58	92	38	100	99	66
Portugal	39	47	35	34	41	44	62	40	44	60	59
Spain	53	40	72	65	92	88	95	91	134	100	126
Total	338	299	329	395	328	379	451	360	488	451	459
<i>South Eastern Europe</i>											
Albania	57	58	64	77	280	124	115	130	94	93	119
Bosnia & Herzegovina (b)	1 389	672	759	403	160	126	108	115	110	111	75
Bulgaria	133	120	143	106	82	108	116	83	95	105	82
Croatia (b)	1 097	1 026	1 296	616	321	137	67	89	99	94	108
Cyprus	59	45	62	44	30	63	41	43	38	32	35
Fmr Yugo Rep of											
Macedonia (b)	411	295	475	389	393	373	310	357	312	356	306
Greece	142	101	92	108	106	99	85	112	81	84	102
Moldava	3	2	-	10	8	31	12	22	15	30	11
Montenegro (b)	-	-	-	-	-	-	-	-	3	12	11
Romania	342	306	289	271	300	289	286	300	310	272	249
Serbia (b)	-	-	-	-	-	-	-	-	34	169	171
Fmr Serbia & Montenegro (b)	2 912	2 356	2 343	2 082	1 633	931	671	509	535	334	288
Slovenia (b)	21	13	19	4	6	12	6	21	36	58	31
Total	6 566	4 994	5 542	4 110	3 319	2 293	1 817	1 781	1 762	1 750	1 588
<i>Eastern Europe</i>											
Belarus (c)	12	16	18	9	13	20	46	47	37	20	39
Czech Republic (d)	11	22	13	22	12	13	22	39	52	42	62
Estonia (c)	3	7	10	21	16	13	14	10	14	14	15
Former Czechoslovakia (d)	104	101	113	134	127	126	113	105	103	98	72
Hungary	59	84	56	79	81	108	119	111	136	142	165
Latvia (c)	13	17	21	18	29	27	30	29	20	23	29
Lithuania (c)	18	23	16	25	18	30	38	22	21	27	27
Poland	290	222	256	232	271	334	354	338	278	329	323
Russian Federation (c)	52	65	88	87	93	222	396	444	338	463	731
Slovakia (d)	7	16	10	12	15	30	18	24	28	31	28
Ukraine	46	78	87	100	107	203	200	202	205	180	186
Eastern Europe nfd	-	-	-	-	-	1	-	-	-	-	-
Total	615	651	688	739	782	1 127	1 350	1 371	1 232	1 369	1 677
Total Europe	18 857	17 998	18 338	16 530	19 789	25 366	25 116	30 407	30 378	30 742	29 294

(b) As reliable data are not available for component countries prior to 1995-96, care should be taken when interpreting the data. Serbia and Montenegro was previously called the Federal Republic of Yugoslavia and since 1998-99 contains the Former Yugoslavia nfd.

(c) As reliable data are not available for component countries prior to 1995-96, care should be taken when interpreting the data.

(d) As reliable data are not available for component countries prior to 1995-96, care should be taken when interpreting the data.

Australia

Table 1.2 (continued) **Settler arrivals by birthplace, 1998-99 to 2008-09**

Birthplace	1998-99	1999-00	2000-01	2001-02	2002-03	2003-04	2004-05	2005-06	2006-07	2007-08	2008-09
North Africa & The Middle East											
<i>North Africa</i>											
Algeria	32	25	59	34	36	29	28	27	16	24	19
Egypt	358	360	423	354	551	736	857	812	756	627	782
Libya	8	12	18	9	19	24	18	20	19	24	19
Morocco	25	31	18	24	41	39	41	45	49	53	47
Sudan	566	594	1 145	1 078	2 775	4 591	5 654	3 783	2 513	1 018	931
Tunisia	11	5	9	6	22	5	4	9	10	10	5
North Africa nfd	1	-	-	1	-	-	-	-	-	-	-
Total	1 001	1 027	1 672	1 506	3 444	5 424	6 602	4 696	3 363	1 756	1 803
<i>The Middle East</i>											
Bahrain	9	12	13	21	22	14	32	28	34	27	43
Gaza Strip & West Bank	16	24	15	22	4	16	5	5	11	6	7
Iran	525	797	907	600	819	843	966	897	1 077	1 101	2 122
Iraq	1 510	1 673	1 629	1 372	2 819	1 903	1 936	2 425	2 213	2 319	4 130
Israel	126	105	114	169	253	318	383	322	327	274	271
Jordan	138	121	180	118	156	189	237	201	152	162	233
Kuwait	106	197	107	58	128	95	92	137	120	137	143
Lebanon	944	1 226	1 498	1 100	1 613	1 293	1 447	1 286	1 390	1 425	1 160
Oman	14	12	13	14	16	11	21	29	25	22	35
Qatar	10	9	18	17	7	13	11	14	27	24	23
Saudi Arabia	42	48	54	51	61	54	87	67	88	96	108
Syria	166	182	214	176	227	211	231	239	240	227	288
Turkey	521	513	423	617	729	707	624	526	334	393	451
United Arab Emirates	49	54	50	121	200	161	219	240	243	259	273
Yemen	12	18	18	13	25	38	9	6	22	12	15
Middle East nfd	5	13	17	25	27	31	59	35	24	37	38
Total	4 193	5 004	5 270	4 494	7 106	5 897	6 359	6 457	6 327	6 521	9 340
Total North Africa & the Middle East	5 194	6 031	6 942	6 000	10 550	11 321	12 961	11 153	9 690	8 277	11 143
Southeast Asia											
Brunei	39	33	61	40	53	63	56	49	35	36	40
Burma (Myanmar)	142	156	223	248	188	185	417	690	1 629	2 101	2 181
Cambodia	322	250	464	480	617	561	630	625	724	710	821
East Timor (e)	-	-	19	18	23	32	30	43	23	34	25
Indonesia (e)	2 491	2 943	3 921	4 221	3 026	2 584	1 930	1 853	1 704	1 788	1 686
Laos	41	17	68	39	41	44	114	66	112	83	78
Malaysia	1 296	1 771	2 222	1 939	2 686	3 718	2 936	2 967	2 899	3 522	3 324
Philippines	3 318	3 186	3 123	2 837	3 190	4 111	4 239	4 871	5 561	6 112	5 942
Singapore	650	884	1 361	1 493	1 751	2 224	3 036	2 685	1 658	1 815	1 454
Thailand	498	527	697	1 230	1 133	1 065	1 277	1 568	1 989	2 278	2 559
Vietnam	2 137	1 502	1 639	1 919	2 568	2 212	2 203	2 661	3 135	2 685	2 898
Total Southeast Asia	10 934	11 269	13 798	14 464	15 276	16 799	16 868	18 078	19 469	21 164	21 008

(e) East Timor previously recorded under Indonesia, care should be taken when interpreting the data.

Australia

Table 1.2 (continued) **Settler arrivals by birthplace, 1998-99 to 2008-09**

Birthplace	1998-99	1999-00	2000-01	2001-02	2002-03	2003-04	2004-05	2005-06	2006-07	2007-08	2008-09
Northeast Asia											
China (f)	6 133	6 809	8 762	6 708	6 664	8 784	11 095	10 581	12 009	12 959	15 803
Hong Kong (g)	1 918	1 467	1 541	931	1 029	1 125	1 273	1 031	995	873	887
Japan	578	553	604	571	607	706	749	755	811	796	772
Korea	627	768	1 344	759	903	1 075	1 788	2 117	2 092	2 574	2 805
Macau (g)	56	43	28	29	25	26	31	21	18	15	20
Mongolia	1	2	3	3	11	5	15	15	20	19	29
Taiwan	1 556	1 699	2 599	1 715	1 109	881	776	752	671	746	661
Total Northeast Asia	10 869	11 341	14 881	10 716	10 348	12 602	15 727	15 272	16 616	17 982	20 977
Southern Asia											
Bangladesh	419	784	950	437	437	581	770	848	908	1 139	1 505
Bhutan	5	-	2	-	1	-	-	2	1	27	575
India	2 557	4 631	6 336	5 091	5 783	8 135	9 414	11 286	13 496	15 338	17 283
Maldives	5	1	1	8	3	7	10	7	7	23	11
Nepal	33	114	228	166	176	235	302	304	460	607	813
Pakistan	613	892	1 256	831	770	1 099	1 348	1 234	1 446	1 376	1 635
Sri Lanka	917	1 280	2 043	2 011	1 845	1 551	2 312	2 361	2 721	3 619	4 078
Total Southern Asia	4 549	7 702	10 816	8 544	9 015	11 608	14 156	16 042	19 039	22 129	25 900
Central Asia											
Afghanistan	767	745	474	646	964	1 221	1 531	2 547	2 186	1 693	1 560
Armenia (d)	6	12	3	7	23	15	6	6	11	8	10
Azerbaijan (d)	2	12	2	10	4	9	12	13	8	3	11
Georgia (d)	1	15	10	9	8	5	6	3	10	10	8
Kazakhstan (d)	9	17	25	13	18	41	35	45	39	57	66
Kyrgyzstan (d)	3	6	2	7	10	25	24	23	18	23	15
Tajikistan (d)	-	1	1	2	2	-	2	5	3	1	2
Turkmenistan (d)	-	-	1	1	3	2	2	6	8	2	2
Uzbekistan (d)	7	8	15	17	11	31	35	82	50	47	57
Total Central Asia	795	816	533	712	1 043	1 349	1 653	2 730	2 333	1 844	1 731
Northern America											
Bermuda	3	5	7	8	8	2	4	5	1	2	6
Canada	581	673	730	586	643	615	679	781	723	715	842
USA	1 040	1 061	1 212	1 136	1 324	1 359	1 578	1 655	1 621	1 467	1 406
Total Northern America	1 624	1 739	1 949	1 730	1 975	1 976	2 261	2 441	2 345	2 184	2 254

(d) As reliable data are not available for component countries prior to 1995-96, care should be taken when interpreting the data.

(f) Excluding SARs and Taiwan.

(g) SAR of China.

Australia

Table 1.2 (continued) Settler arrivals by birthplace, 1998-99 to 2008-09

Birthplace	1998-99	1999-00	2000-01	2001-02	2002-03	2003-04	2004-05	2005-06	2006-07	2007-08	2008-09
South America, Central America & the Caribbean											
<i>South America</i>											
Argentina	65	59	79	78	167	337	325	233	134	125	118
Bolivia	20	15	20	14	15	18	11	16	11	22	15
Brazil	96	104	110	154	208	194	334	356	400	435	389
Chile	186	135	132	143	187	183	181	166	147	170	179
Colombia	90	85	118	146	209	183	225	220	232	268	302
Ecuador	11	18	31	23	38	49	45	48	28	42	37
Falkland Islands	1	-	-	1	-	2	1	2	1	1	-
French Guiana	1	-	1	-	-	1	-	-	-	-	-
Guyana	3	10	9	-	5	7	-	10	7	6	6
Paraguay	6	4	5	12	4	4	4	16	3	5	7
Peru	96	96	122	111	171	151	195	296	306	250	250
Suriname	1	-	-	-	7	4	1	2	3	3	3
Uruguay	23	12	21	27	54	57	65	64	31	39	29
Venezuela	35	30	40	37	52	58	120	171	151	258	249
South America nfd	-	-	-	2	-	-	-	-	1	1	1
Total	634	568	688	748	1 117	1 248	1 507	1 600	1 455	1 625	1 585
<i>Central America</i>											
Belize	-	1	1	-	1	1	-	-	-	1	1
Costa Rica	1	3	2	7	4	-	4	13	4	7	6
El Salvador	37	24	29	27	22	21	31	29	20	47	54
Guatemala	6	6	10	9	2	8	2	6	14	10	12
Honduras	3	-	-	4	3	3	4	5	4	7	4
Mexico	31	30	30	40	68	51	76	148	144	237	212
Nicaragua	5	2	-	3	2	-	1	6	9	7	3
Panama	4	5	3	2	2	4	6	9	2	6	8
Central America nfd	-	2	1	-	-	1	-	-	2	-	-
Total	87	73	76	92	104	89	124	216	199	322	300
<i>The Caribbean</i>											
Antigua And Barbuda	-	-	-	-	-	-	-	2	2	-	1
Aruba	-	1	-	-	-	-	-	-	-	-	1
Bahamas	2	2	3	2	3	6	3	1	2	3	-
Barbados	3	1	8	1	4	3	3	6	5	10	4
Cayman Islands	2	-	2	3	-	2	3	1	5	6	2
Cuba	14	8	14	17	16	20	18	26	21	36	30
Dominica	-	-	-	-	-	2	2	-	-	2	-
Dominican Republic	5	2	4	5	3	5	5	5	4	8	7
Grenada	-	2	-	-	1	1	1	3	-	2	-
Guadeloupe	-	-	-	2	2	-	1	-	-	-	1
Haiti	3	1	-	6	1	1	-	3	-	1	1
Jamaica	9	10	22	10	7	13	23	21	21	17	30
Martinique	-	2	-	-	-	-	-	-	-	-	-
Montserrat	-	-	-	-	-	-	-	2	-	2	-
Netherlands Antilles	1	-	1	5	1	-	1	4	1	1	-
Puerto Rico	2	1	1	2	2	1	1	1	3	3	1

Australia

Table 1.2 (continued) Settler arrivals by birthplace, 1998-99 to 2008-09

Birthplace	1998-99	1999-00	2000-01	2001-02	2002-03	2003-04	2004-05	2005-06	2006-07	2007-08	2008-09
<i>The Caribbean (continued)</i>											
St Kitts And Nevis	-	-	-	-	1	-	-	-	-	2	1
St Lucia	1	-	-	-	-	-	2	3	3	1	-
St Vincent And The Grenadine	-	1	-	-	-	-	-	1	-	-	2
Trinidad And Tobago	10	8	14	7	5	26	24	14	21	14	13
Turks And Caicos Islands	-	-	-	-	-	-	-	1	-	-	-
Virgin Islands British	-	-	-	-	-	-	1	-	-	-	-
Virgin Islands United States	-	-	-	-	-	1	-	1	-	-	-
Caribbean nfd	-	-	-	-	-	-	1	-	2	-	-
Total	52	39	69	60	46	81	89	95	90	108	94
Total South America, Central America & The Caribbean	773	680	833	900	1 267	1 418	1 720	1 911	1 744	2 055	1 979
Sub-Saharan Africa											
<i>Central & West Africa</i>											
Benin	-	-	-	-	-	-	2	1	11	23	5
Burkina Faso	-	-	-	3	1	1	-	-	1	2	1
Cameroon	1	2	-	4	9	4	4	5	11	29	5
Cape Verde	-	-	-	-	-	-	-	1	1	2	-
Central African Republic	-	-	-	-	-	-	1	-	1	13	-
Chad	-	-	-	-	-	-	1	2	4	4	-
Congo	3	3	20	8	23	137	276	91	103	32	68
Congo Democratic Republic	7	3	4	8	8	26	21	155	569	474	271
Cote D'Ivoire	2	1	2	-	5	2	111	55	83	77	75
Gabon	-	-	1	1	-	-	2	1	-	1	1
Gambia	4	-	-	1	3	-	2	4	6	3	-
Ghana	137	94	84	76	95	137	143	217	245	180	145
Guinea	1	1	4	8	25	16	152	101	147	87	58
Guinea-Bissau	-	-	-	3	1	-	-	1	-	-	-
Liberia	2	-	18	113	145	114	851	564	539	255	287
Mali	-	1	-	-	1	1	1	1	-	1	-
Mauritania	1	-	-	-	-	-	1	3	3	42	-
Niger	1	7	7	6	1	1	2	9	6	3	7
Nigeria	82	56	86	126	89	102	111	160	187	185	258
Senegal	2	6	2	11	6	4	7	12	6	54	7
Sierra Leone	6	61	127	328	174	132	642	532	519	276	225
Togo	-	-	3	1	1	2	8	3	49	99	46
Total	249	235	358	697	587	679	2 338	1 918	2 491	1 842	1 459
<i>Southern & East Africa</i>											
Angola	3	5	2	10	3	1	3	3	12	4	12
Botswana	12	10	19	16	26	27	29	24	36	21	44
Burundi	1	1	5	5	8	51	259	442	440	228	195
Comoros	-	-	3	-	1	-	-	-	3	-	-
Djibouti	9	5	7	6	6	2	9	1	6	3	3
Eritrea (h)	187	142	137	133	109	148	125	168	138	128	171
Ethiopia (h)	371	357	397	396	570	718	586	429	575	466	729
Kenya	297	231	256	413	574	617	806	648	701	459	603
Lesotho	-	-	2	7	3	1	8	2	4	-	3
Madagascar	7	4	4	5	8	3	1	4	6	5	4
Malawi	15	9	14	32	19	32	40	17	35	39	28

(h) As reliable data are not available for component countries prior to 1995-96, care should be taken when interpreting the data.

Australia

Table 1.2 (continued) **Settler arrivals by birthplace, 1998-99 to 2008-09**

Birthplace	1998-99	1999-00	2000-01	2001-02	2002-03	2003-04	2004-05	2005-06	2006-07	2007-08	2008-09
<i>Southern & East Africa</i> (continued)											
Mauritius	64	118	138	153	170	238	227	260	308	388	535
Mozambique	10	7	14	18	21	20	15	8	13	18	25
Namibia	27	27	37	39	48	23	53	39	36	28	56
Reunion	5	5	-	2	-	2	1	3	1	1	5
Rwanda	1	2	1	3	14	44	47	68	93	54	69
St Helena	-	-	-	-	1	-	1	1	-	-	-
Seychelles	17	19	1	32	20	36	25	27	36	18	32
Somalia	507	284	319	359	203	221	246	264	296	156	388
South Africa	5 024	5 691	5 754	5 714	4 603	5 849	4 594	3 953	3 996	5 166	7 201
Swaziland	12	8	8	6	6	11	3	10	6	4	13
Tanzania	20	16	13	26	24	55	176	405	344	291	177
Uganda	15	17	22	48	71	98	185	161	277	155	122
Zambia	72	90	84	123	77	129	98	93	127	109	116
Zimbabwe	322	573	720	1 068	1 197	1 620	1 258	1 104	935	1 019	1 034
Southern & East Africa nfd	-	1	1	-	1	1	-	-	-	1	1
Total	6 998	7 622	7 958	8 614	7 783	9 947	8 795	8 134	8 424	8 761	11 566
Total											
Sub-Saharan Africa	7 247	7 857	8 316	9 311	8 370	10 626	11 133	10 052	10 915	10 603	13 025
Supplementary codes (i)											
Europe & USSR nfd	1	-	-	-	-	-	-	-	-	-	-
Fmr USSR	723	727	788	815	740	660	687	699	505	556	671
Total	724	727	788	815	740	660	687	699	505	556	671
Not stated	76	73	38	26	24	46	11	31	53	132	29
Total all countries	84 143	92 272	107 366	88 900	93 914	111 590	123 424	131 593	140 148	149 365	158 021

(i) Supplementary codes which cannot be classified to any major region in the Standard Australian Classification of Countries (SACC). This may lead to under reporting of their component countries in the rest of the table, care should be taken when interpreting the data.

Australia

Table 1.3 Settler arrivals by state or territory of intended residence and sex, 1995-96 to 2008-09

Financial Year	State or Territory of intended residence (a)								
	New South Wales	Victoria	Queensland	South Australia	Western Australia	Tasmania	Northern Territory	Australian Capital Territory	Australia (b)
Males									
1995-96	19 566	10 051	7 108	1 800	5 413	266	190	425	44 831
1996-97	17 565	8 570	6 973	1 641	5 253	205	234	426	40 877
1997-98	15 145	7 623	7 380	1 498	4 922	181	208	305	37 278
1998-99	16 961	8 113	7 800	1 598	5 310	228	220	339	40 573
1999-00	19 309	9 431	8 502	1 504	5 734	214	225	394	45 322
2000-01	23 351	11 953	9 743	1 599	5 699	275	217	536	53 386
2001-02	16 994	10 506	7 553	1 630	5 323	286	183	515	42 993
2002-03	17 388	10 873	7 707	1 759	5 998	395	206	421	44 750
2003-04	19 521	13 527	9 741	2 362	7 463	405	259	509	53 787
2004-05	21 315	14 770	10 940	3 188	7 989	454	277	561	59 495
2005-06	21 242	15 334	11 890	4 443	8 570	425	338	607	62 852
2006-07	20 471	16 305	13 757	4 896	9 714	453	357	554	66 509
2007-08	20 650	17 620	15 805	4 791	11 266	503	369	670	71 675
2008-09	21 899	18 585	15 840	4 598	11 893	579	483	846	74 725
Females									
1995-96	24 761	12 218	8 176	2 042	5 905	290	304	596	54 308
1996-97	19 647	9 696	7 667	1 695	5 265	226	256	407	44 875
1997-98	16 549	8 610	7 715	1 571	4 819	188	227	352	40 049
1998-99	18 180	9 178	8 228	1 722	5 362	214	254	424	43 570
1999-00	20 002	9 888	8 784	1 601	5 778	230	246	415	46 950
2000-01	23 394	12 206	9 792	1 584	5 866	289	255	579	53 980
2001-02	18 307	10 868	8 272	1 686	5 631	303	276	560	45 907
2002-03	19 043	12 236	8 475	1 898	6 281	416	277	536	49 164
2003-04	21 040	14 501	10 543	2 411	7 948	479	337	541	57 803
2004-05	23 431	15 811	11 720	3 176	8 329	490	315	656	63 929
2005-06	23 419	16 963	12 972	4 656	9 068	454	442	765	68 741
2006-07	23 364	18 393	14 883	5 165	10 069	515	486	757	73 639
2007-08	22 870	19 593	16 691	5 105	11 472	589	519	848	77 690
2008-09	25 131	20 974	17 189	5 097	12 570	640	596	1 096	83 296
Persons									
1995-96	44 327	22 269	15 284	3 842	11 318	556	494	1 021	99 139
1996-97	37 212	18 266	14 640	3 336	10 518	431	490	833	85 752
1997-98	31 694	16 233	15 095	3 069	9 741	369	435	657	77 327
1998-99	35 141	17 291	16 028	3 320	10 672	442	474	763	84 143
1999-00	39 311	19 319	17 286	3 105	11 512	444	471	809	92 272
2000-01	46 745	24 159	19 535	3 183	11 565	564	472	1 115	107 366
2001-02	35 301	21 374	15 825	3 316	10 954	589	459	1 075	88 900
2002-03	36 431	23 109	16 182	3 657	12 279	811	483	957	93 914
2003-04	40 561	28 028	20 284	4 773	15 411	884	596	1 050	111 590
2004-05	44 746	30 581	22 660	6 364	16 318	944	592	1 217	123 424
2005-06	44 661	32 297	24 862	9 099	17 638	879	780	1 372	131 593
2006-07	43 835	34 698	28 640	10 061	19 783	968	843	1 311	140 148
2007-08	43 520	37 213	32 496	9 896	22 738	1 092	888	1 518	149 365
2008-09	47 030	39 559	33 029	9 695	24 463	1 219	1 079	1 942	158 021

(a) Based on stated intention at time of arrival only. There can be no guarantee that the settler actually settled in this State/Territory.

(b) Includes not stated. From 1994-95 also includes Other Territories which comprise Christmas Island, Cocos (Keeling) Islands and Jervis Bay. Previously published as Table 2.2 in Consolidated Statistics (ceased publication 2000).

Australia

Table 1.4 Permanent movements by age, 1995-96 to 2008-09

Financial Year	Age group (years)									
	0-9	10-19	0-19 Total	20-29	30-39	40-49	50-59	20-59 Total	60+	Total
Settler arrivals										
1995-96	17 363	13 525	30 888	23 202	22 742	10 172	5 526	61 642	6 609	99 139
1996-97	14 891	12 200	27 091	19 419	19 583	9 473	4 743	53 218	5 443	85 752
1997-98	14 589	11 462	26 051	17 605	19 075	8 314	3 314	48 308	2 968	77 327
1998-99	14 673	11 775	26 448	20 338	21 077	9 160	3 718	54 293	3 402	84 143
1999-00	16 164	13 188	29 352	22 083	23 483	10 814	3 597	59 977	2 943	92 272
2000-01	18 733	15 221	33 954	26 259	26 582	13 083	4 408	70 332	3 080	107 366
2001-02	14 680	13 012	27 692	23 124	21 833	10 580	3 463	59 000	2 208	88 900
2002-03	15 826	13 839	29 665	24 225	23 531	11 207	3 339	62 302	1 947	93 914
2003-04	20 005	15 736	35 741	25 939	29 177	13 553	4 046	72 715	3 134	111 590
2004-05	22 417	17 033	39 450	28 730	31 481	14 206	5 089	79 506	4 468	123 424
2005-06	24 257	18 066	42 323	30 760	33 976	15 736	4 998	85 470	3 800	131 593
2006-07	25 775	20 003	45 778	33 147	34 908	17 142	5 292	90 489	3 881	140 148
2007-08	26 860	20 610	47 470	35 909	37 000	18 636	5 992	97 537	4 358	149 365
2008-09	28 088	21 876	49 964	37 335	37 859	19 786	7 176	102 156	5 901	158 021
Australian ^(a) born departures										
1995-96	3 215	977	4 192	2 509	2 499	1 194	430	6 632	189	11 013
1996-97	3 231	980	4 211	2 833	2 728	1 270	476	7 307	186	11 704
1997-98	3 505	1 056	4 561	3 081	2 991	1 440	532	8 044	184	12 789
1998-99	3 230	1 195	4 425	4 124	4 810	2 340	1 193	12 467	372	17 264
1999-00	3 673	1 435	5 108	4 661	5 671	2 908	1 426	14 666	491	20 265
2000-01	3 992	1 612	5 604	5 259	6 774	3 367	1 658	17 058	455	23 117
2001-02	4 028	1 633	5 661	5 141	7 403	3 651	1 772	17 967	542	24 170
2002-03	4 183	1 767	5 950	5 047	8 104	4 003	1 953	19 107	555	25 612
2003-04	4 875	2 128	7 003	5 470	9 002	4 569	2 342	21 383	754	29 140
2004-05	5 140	2 100	7 240	5 970	9 789	4 703	2 577	23 039	748	31 027
2005-06	5 327	2 370	7 697	6 680	10 897	5 273	2 873	25 723	864	34 284
2006-07	5 651	2 373	8 024	7 402	11 839	5 656	3 016	27 913	945	36 882
2007-08	5 872	2 431	8 303	7 748	12 534	6 182	3 234	29 698	1 143	39 144
2008-09	5 997	2 585	8 582	7 830	13 283	6 672	3 560	31 345	1 322	41 249
Overseas born departures										
1995-96	1 444	1 614	3 058	3 615	5 060	2 884	1 353	12 912	1 687	17 657
1996-97	1 530	1 664	3 194	3 492	4 987	3 067	1 502	13 048	1 911	18 153
1997-98	1 590	1 707	3 297	3 571	5 355	3 294	1 716	13 936	1 963	19 196
1998-99	1 718	1 407	3 125	3 002	4 708	3 471	1 916	13 097	1 695	17 917
1999-00	1 943	1 715	3 658	3 247	5 450	4 193	2 321	15 211	1 944	20 813
2000-01	2 080	1 862	3 942	3 875	6 048	4 877	2 681	17 481	1 981	23 404
2001-02	2 191	1 844	4 035	4 106	6 263	5 000	2 674	18 043	1 993	24 071
2002-03	2 348	1 927	4 275	4 190	6 181	5 122	2 975	18 468	2 108	24 851
2003-04	2 586	2 248	4 834	4 764	7 348	6 548	3 818	22 478	2 626	29 938
2004-05	2 740	2 319	5 059	5 124	7 764	6 862	4 054	23 804	2 716	31 579
2005-06	3 033	2 549	5 582	5 410	7 965	7 320	4 387	25 082	2 905	33 569
2006-07	3 374	2 434	5 808	5 787	8 350	7 267	4 674	26 078	3 335	35 221
2007-08	3 730	2 680	6 410	6 427	8 733	7 535	5 048	27 743	3 626	37 779
2008-09	4 018	2 952	6 970	6 697	8 925	7 877	5 458	28 957	3 842	39 769

(a) Includes Australian External Territories.

Previously published as Table 2.5 in Consolidated Statistics (ceased publication 2000).

Australia

Table 1.5 Settler arrivals by eligibility category^(a), 1998-99 to 2008-09

Eligibility category	Financial Year											
	1998-99	1999-00	2000-01	2001-02	2002-03	2003-04	2004-05	2005-06	2006-07	2007-08	2008-09	
Family												
- Preferential												
Spouses	13 563	13 124	13 148	15 977	19 196	18 337	19 350	21 231	22 789	23 149	23 775	
Fiancées	2 952	3 073	3 379	3 841	5 118	5 122	5 675	6 168	6 632	6 538	6 951	
Parents	2 201	1 177	1 068	545	375	2 520	4 865	3 848	3 657	4 118	6 477	
Dependent Child (b)	1 252	1 122	1 138	1 199	1 305	1 422	1 312	1 442	1 777	2 083	2 194	
Child for Adoption	296	310	304	332	379	459	410	441	437	381	349	
Other	1 237	1 090	1 108	1 450	1 693	1 688	1 570	1 641	1 846	2 135	2 410	
Total	21 501	19 896	20 145	23 344	28 066	29 548	33 182	34 771	37 138	38 404	42 156	
Skill												
- Skilled Sponsored (c)	-	-	-	-	-	-	-	-	-	88	3 818	
- Regional Sponsored (c)	-	-	-	-	-	-	-	-	-	16	1 311	
- Australian Sponsored (d)	8 409	8 882	6 743	4 586	4 505	6 285	6 907	7 695	5 039	6 058	4 648	
- Regional Designated Area Sponsored (d)	57	139	830	1 374	2 392	6 954	6 441	7 799	7 480	5 184	2 808	
- Skilled Independent	12 198	16 373	21 113	21 583	23 895	29 699	29 540	29 893	32 516	36 826	39 131	
- STNI (e)	119	46	42	195	480	1 384	2 365	3 714	3 675	3 435	3 075	
- Skilled Independent Regional (f)	-	-	-	-	-	-	495	3 026	3 606	4 050	2 044	
- Employer Sponsored	1 628	1 212	1 307	1 817	1 748	2 044	2 481	3 092	3 469	4 263	5 186	
- Business Skills	5 433	5 631	5 600	6 409	5 421	5 072	4 813	4 237	4 881	5 370	7 323	
- Distinguished Talents	87	67	80	72	63	90	91	51	89	114	112	
Total	27 931	32 350	35 715	36 036	38 504	51 528	53 133	59 507	60 755	65 404	69 456	
Special Eligibility	175	131	127	176	178	207	162	104	109	131	124	
Humanitarian												
- Refugees	3 269	3 429	4 142	3 525	3 882	3 130	5 278	5 190	6 231	5 696	7 102	
- Humanitarian	4 614	3 022	2 706	3 003	5 686	7 205	7 957	6 923	6 016	3 811	4 543	
- Special Assistance	907	816	792	204	1	-	-	-	-	-	-	
Total	8 790	7 267	7 640	6 732	9 569	10 335	13 235	12 113	12 247	9 507	11 645	
Non-program migration												
- New Zealand Citizens	24 680	31 610	42 257	21 458	16 364	18 718	22 379	23 781	28 307	34 491	33 034	
- Other	1 066	1 018	1 482	1 154	1 233	1 254	1 333	1 317	1 592	1 428	1 606	
Total	25 746	32 628	43 739	22 612	17 597	19 972	23 712	25 098	29 899	35 919	34 640	
Total persons	84 143	92 272	107 366	88 900	93 914	111 590	123 424	131 593	140 148	149 365	158 021	

(a) Migration eligibility categories have changed during the period. The allocation of settlers to categories is based on assumptions, to align as closely as possible past policies with current policy. Comparisons between years are therefore indicative only.

(b) From 1 July 2006 the Dependent child extended eligibility category was included in settler arrivals data (361 arrivals in 2006-07).

(c) Implemented 1 September 2007.

(d) Data based on visa subclass at time of arrival.

(e) State Territory Nominated Independent.

(f) Implemented 1 July 2004.

Previously published as Table 2.7 in Consolidated Statistics (ceased publication 2000).

Australia

Table 1.6 Settler arrivals by eligibility category^(a) and state or territory of intended residence, 1996-97 to 2008-09

Financial Year	State or Territory of intended residence (b)								
	New South Wales	Victoria	Queensland	South Australia	Western Australia	Tasmania	Northern Territory	Australian Capital Territory	Australia (c)
Family									
1996-97	17 358	9 133	3 737	1 508	3 951	193	231	363	36 490
1997-98	9 870	5 575	2 411	919	1 861	113	155	225	21 142
1998-99	10 480	5 439	2 370	845	1 862	100	161	238	21 501
1999-00	9 425	4 937	2 321	825	1 864	150	137	232	19 896
2000-01	9 358	5 071	2 418	830	1 928	146	137	248	20 145
2001-02	10 297	6 165	3 022	994	2 192	155	205	307	23 344
2002-03	12 306	7 756	3 453	1 243	2 525	194	214	370	28 066
2003-04	12 766	7 981	3 893	1 240	2 839	220	228	378	29 548
2004-05	14 658	8 926	4 185	1 339	3 235	210	224	403	33 182
2005-06	15 220	9 203	4 511	1 502	3 372	257	229	473	34 771
2006-07	15 447	10 147	4 969	1 769	3 762	237	290	508	37 138
2007-08	15 911	10 501	5 054	1 762	4 094	283	313	484	38 404
2008-09	16 975	11 546	5 790	1 958	4 562	327	373	621	42 156
Skill									
1996-97	8 805	3 057	3 155	765	3 524	52	111	227	19 697
1997-98	11 287	4 537	3 578	1 157	4 966	66	149	230	25 985
1998-99	12 194	4 898	3 643	1 247	5 454	96	155	242	27 931
1999-00	13 796	6 333	3 925	1 243	6 506	107	156	281	32 350
2000-01	15 390	7 996	4 426	967	6 250	98	140	446	35 715
2001-02	14 267	8 582	4 803	1 257	6 431	141	110	445	36 036
2002-03	14 687	9 163	5 204	1 332	7 477	177	122	342	38 504
2003-04	18 040	13 161	7 421	2 278	9 850	189	159	430	51 528
2004-05	18 951	13 496	7 243	3 320	9 166	313	154	490	53 133
2005-06	18 644	15 167	8 101	5 987	10 452	317	274	565	59 507
2006-07	17 094	15 680	8 899	6 518	11 353	371	308	532	60 755
2007-08	17 317	17 394	10 132	6 608	12 542	395	338	677	65 404
2008-09	19 071	18 630	10 810	5 987	13 233	405	405	914	69 456
Special Eligibility									
1996-97	160	66	73	15	69	1	1	8	393
1997-98	70	47	46	23	28	-	-	3	217
1998-99	61	40	37	8	25	3	-	1	175
1999-00	46	31	11	18	23	-	2	-	131
2000-01	27	45	9	15	26	5	-	-	127
2001-02	30	41	38	14	50	1	2	-	176
2002-03	55	45	26	21	29	2	-	-	178
2003-04	62	44	40	11	48	2	-	-	207
2004-05	51	31	28	19	31	-	1	1	162
2005-06	35	23	15	10	19	2	-	-	104
2006-07	31	43	19	4	11	-	-	1	109
2007-08	44	37	28	3	11	4	-	4	131
2008-09	65	22	10	9	13	-	-	5	124

(a) Migration eligibility categories have changed during the period. The allocation of settlers to categories is based on assumptions, to align as closely as possible past policies with current policy. Comparisons between years are therefore indicative only.

(b) Based on stated intention at time of arrival only. There can be no guarantee that the settler actually settled in this state.

(c) Includes not stated. From 1994-95 also includes Other Territories which comprise Christmas Island, Cocos (Keeling) Islands and Jervis Bay. Previously published as Table 2.8 in Consolidated Statistics (ceased production 2000).

Australia

Table 1.6 (continued) **Settler arrivals by eligibility category^(a) and State or Territory of intended residence, 1996-97 to 2008-09**

Financial Year	State or Territory of intended residence (b)								
	New South Wales	Victoria	Queensland	South Australia	Western Australia	Tasmania	Northern Territory	Australian Capital Territory	Australia (c)
	Humanitarian								
1996-97	4 361	3 057	605	605	984	82	59	126	9 886
1997-98	3 720	2 781	718	527	831	108	48	46	8 779
1998-99	3 347	2 844	724	733	910	122	42	67	8 790
1999-00	3 097	2 122	550	494	854	37	46	66	7 267
2000-01	2 797	2 157	677	642	1 048	142	73	100	7 640
2001-02	2 519	1 907	626	558	749	197	57	119	6 732
2002-03	3 583	2 829	950	686	1 033	302	92	94	9 569
2003-04	3 507	3 189	990	844	1 243	351	107	104	10 335
2004-05	4 240	3 936	1 506	1 196	1 749	300	137	171	13 235
2005-06	4 269	3 433	1 432	1 072	1 367	200	152	188	12 113
2006-07	4 192	3 311	1 398	1 229	1 634	244	142	97	12 247
2007-08	2 958	2 787	976	835	1 440	237	94	180	9 507
2008-09	4 151	3 035	1 159	1 013	1 688	303	108	188	11 645
	Non-program migration ^(d)								
1996-97	6 528	2 953	7 070	443	1 990	103	88	109	19 286
1997-98	6 747	3 293	8 342	443	2 055	82	83	153	21 204
1998-99	9 059	4 070	9 254	487	2 421	121	116	215	25 746
1999-00	12 947	5 896	10 479	525	2 265	150	130	230	32 628
2000-01	19 173	8 890	12 005	729	2 313	173	122	321	43 739
2001-02	8 188	4 679	7 336	493	1 532	95	85	204	22 612
2002-03	5 800	3 316	6 549	375	1 215	136	55	151	17 597
2003-04	6 186	3 653	7 940	400	1 431	122	102	138	19 972
2004-05	6 846	4 192	9 698	490	2 137	121	76	152	23 712
2005-06	6 493	4 471	10 803	528	2 428	103	125	146	25 098
2006-07	7 071	5 517	13 355	541	3 023	116	103	173	29 899
2007-08	7 290	6 494	16 306	688	4 651	173	143	173	35 919
2008-09	6 768	6 326	15 260	728	4 967	184	193	214	34 640
	Total								
1996-97	37 212	18 266	14 640	3 336	10 518	431	490	833	85 752
1997-98	31 694	16 233	15 095	3 069	9 741	369	435	657	77 327
1998-99	35 141	17 291	16 028	3 320	10 672	442	474	763	84 143
1999-00	39 311	19 319	17 286	3 105	11 512	444	471	809	92 272
2000-01	46 745	24 159	19 535	3 183	11 565	564	472	1 115	107 366
2001-02	35 301	21 374	15 825	3 316	10 954	589	459	1 075	88 900
2002-03	36 431	23 109	16 182	3 657	12 279	811	483	957	93 914
2003-04	40 561	28 028	20 284	4 773	15 411	884	596	1 050	111 590
2004-05	44 746	30 581	22 660	6 364	16 318	944	592	1 217	123 424
2005-06	44 661	32 297	24 862	9 099	17 638	879	780	1 372	131 593
2006-07	43 835	34 698	28 640	10 061	19 783	968	843	1 311	140 148
2007-08	43 520	37 213	32 496	9 896	22 738	1 092	888	1 518	149 365
2008-09	47 030	39 559	33 029	9 695	24 463	1 219	1 079	1 942	158 021

(a) Migration eligibility categories have changed during the period. The allocation of settlers to categories is based on assumptions, to align as closely as possible past policies with current policy. Comparisons between years are therefore indicative only.

(b) Based on stated intention at time of arrival only. There can be no guarantee that the settler actually settled in this state.

(c) Includes not stated. From 1994-95 also includes Other Territories which comprise Christmas Island, Cocos (Keeling) Islands and Jervis Bay.

(d) Includes New Zealand citizens and children born to Australian citizens overseas.

Previously published as Table 2.8 in Consolidated Statistics (ceased publication 2000).

New South Wales

Table 2.1 Settler arrivals by birthplace, 1998-99 to 2008-09

Birthplace	1998-99	1999-00	2000-01	2001-02	2002-03	2003-04	2004-05	2005-06	2006-07	2007-08	2008-09
Oceania											
<i>Australia & External Territories (a)</i>	108	171	247	211	166	162	230	254	182	225	199
<i>New Zealand</i>	5 944	7 682	9 419	5 103	3 810	4 088	4 567	4 482	5 240	5 233	4 738
<i>Melanesia</i>											
New Caledonia	9	4	2	1	2	-	4	3	1	1	1
Papua New Guinea	22	18	25	18	26	31	20	43	21	30	12
Solomon Islands	13	11	3	8	9	2	6	6	8	4	2
Vanuatu	-	2	15	8	5	1	7	8	9	4	6
Total	44	35	45	35	42	34	37	60	39	39	21
<i>Micronesia</i>											
Guam	1	-	2	-	2	-	1	-	-	-	-
Kiribati	1	5	-	-	-	-	-	-	-	-	6
Marshall Islands	-	1	-	-	-	-	-	2	-	-	-
Nauru	-	-	1	1	1	2	1	-	1	-	-
Northern Mariana Islands	-	-	-	-	-	-	-	-	-	1	-
Total	2	6	3	1	3	2	2	2	1	1	6
<i>Polynesia (excluding Hawaii)</i>											
Cook Islands	116	98	104	59	24	40	29	35	38	57	74
Fiji	1 009	1 221	1 374	1 014	1 022	901	1 058	1 046	819	901	851
French Polynesia	-	5	1	1	3	2	2	2	1	2	4
Niue	21	19	28	15	11	11	17	9	10	15	8
Samoa	583	531	684	405	238	283	310	264	169	168	180
Samoa American	2	3	8	2	1	1	6	3	-	4	1
Tokelau	13	14	15	26	6	18	16	23	7	5	7
Tonga	218	221	255	180	131	138	163	161	101	90	115
Tuvalu	-	3	1	-	-	1	2	-	-	-	3
Total	1 962	2 115	2 470	1 702	1 436	1 395	1 603	1 543	1 145	1 242	1 243
Total Oceania	8 060	10 009	12 184	7 052	5 457	5 681	6 439	6 341	6 607	6 740	6 207
Europe											
<i>United Kingdom & Ireland</i>											
UK	2 611	2 747	2 578	2 577	3 443	4 519	3 923	4 561	4 192	4 034	4 045
Ireland	377	409	357	235	320	384	398	386	381	404	493
Total	2 988	3 156	2 935	2 812	3 763	4 903	4 321	4 947	4 573	4 438	4 538
<i>Western Europe</i>											
Austria	29	44	20	15	36	41	18	24	36	29	47
Belgium	18	22	23	24	36	29	24	18	14	28	24
France	110	118	96	99	131	156	120	119	112	128	132
Germany	259	284	274	250	263	312	255	247	242	279	251
Liechtenstein	-	-	-	-	-	1	-	-	-	-	-
Luxembourg	-	-	-	-	1	1	1	-	-	-	-
Monaco	1	-	-	-	2	-	-	1	-	-	-
Netherlands	82	118	146	143	125	130	122	130	105	114	143
Switzerland	66	69	68	48	76	71	58	68	42	66	52
Total	565	655	627	579	670	741	598	607	551	644	649

(a) The Australia component consists of persons born in Australia who have settled overseas and returned.

New South Wales

Table 2.1 (continued) **Settler arrivals by birthplace, 1998-99 to 2008-09**

Birthplace	1998-99	1999-00	2000-01	2001-02	2002-03	2003-04	2004-05	2005-06	2006-07	2007-08	2008-09
<i>Northern Europe</i>											
Denmark	28	24	40	31	32	31	29	34	26	26	17
Finland	19	13	18	19	14	16	22	23	16	22	18
Iceland	1	2	-	1	-	-	-	-	2	-	3
Norway	11	15	12	10	14	20	16	24	19	16	19
Sweden	29	37	48	53	44	86	54	56	50	51	59
Total	88	91	118	114	104	153	121	137	113	115	116
<i>Southern Europe</i>											
Andorra	-	-	-	-	-	-	-	-	-	1	-
Gibraltar	2	-	-	-	1	2	3	1	3	1	-
Italy	75	51	65	73	51	56	55	51	62	50	52
Malta	15	25	18	13	6	15	24	8	22	24	24
Portugal	25	27	8	16	16	16	10	10	12	15	21
Spain	25	18	33	32	29	40	31	33	60	37	47
Total	142	121	124	134	103	129	123	103	159	128	144
<i>South Eastern Europe</i>											
Albania	10	16	10	16	17	18	11	16	9	13	19
Bosnia & Herzegovina (b)	410	192	199	117	47	40	35	39	34	26	15
Bulgaria	87	60	54	45	28	23	39	24	20	29	28
Croatia (b)	455	474	581	306	119	48	19	32	32	28	26
Cyprus	32	26	29	15	8	17	14	13	9	9	10
Fmr Yugo Rep of Macedonia (b)	170	120	185	166	173	143	121	140	122	119	92
Greece	55	39	43	38	48	42	30	42	22	19	39
Moldava	1	-	-	6	3	5	7	8	4	6	4
Montenegro (b)	-	-	-	-	-	-	-	-	-	1	4
Romania	100	89	96	75	77	76	85	60	68	74	59
Serbia (b)	-	-	-	-	-	-	-	-	13	49	57
Fmr Serbia & Montenegro (b)	845	672	669	682	525	365	233	170	157	86	80
Slovenia	7	1	8	-	3	5	1	8	7	8	4
Total	2 172	1 689	1 874	1 466	1 048	782	595	552	497	467	437
<i>Eastern Europe</i>											
Belarus (c)	5	2	9	5	8	7	27	28	15	5	17
Czech Republic (d)	3	10	5	8	7	7	10	10	19	18	21
Estonia (c)	2	2	5	16	8	6	3	4	3	2	5
Former Czechoslovakia (d)	46	46	48	68	60	61	48	48	54	49	24
Hungary	26	47	27	31	29	40	49	41	47	54	39
Latvia (c)	6	4	6	1	20	11	13	11	9	9	10
Lituanian (c)	7	8	9	14	9	15	21	8	7	5	10
Poland	109	69	97	71	95	112	119	107	87	110	93
Russian Federation (c)	25	31	41	36	52	100	166	200	162	164	295
Slovakia (d)	3	8	8	6	12	16	9	10	11	12	12
Ukraine	15	27	26	31	45	78	94	77	74	79	72
Total	247	254	281	287	345	453	559	544	488	507	598
Total Europe	6 202	5 966	5 959	5 392	6 033	7 161	6 317	6 890	6 381	6 299	6 482

(b) As reliable data are not available for component countries prior to 1995-96, care should be taken when interpreting the data. Serbia and Montenegro was previously called the Federal Republic of Yugoslavia and since 1998-99 contains the Former Yugoslavia nfd.

(c) As reliable data are not available for component countries prior to 1995-96, care should be taken when interpreting the data.

(d) As reliable data are not available for component countries prior to 1995-96, care should be taken when interpreting the data.

New South Wales

Table 2.1 (continued) **Settler arrivals by birthplace, 1998-99 to 2008-09**

Birthplace	1998-99	1999-00	2000-01	2001-02	2002-03	2003-04	2004-05	2005-06	2006-07	2007-08	2008-09
North Africa & The Middle East											
<i>North Africa</i>											
Algeria	20	15	18	18	19	16	20	14	5	14	12
Egypt	204	197	222	180	227	287	369	356	324	278	355
Libya	3	10	8	5	7	14	9	6	9	9	11
Morocco	16	13	11	15	15	15	19	28	21	21	18
Sudan	265	283	357	277	771	1 318	1 424	1 017	733	262	233
Tunisia	5	2	2	5	14	4	3	2	6	7	3
Total	513	520	618	500	1 053	1 654	1 844	1 423	1 098	591	632
<i>The Middle East</i>											
Bahrain	6	8	2	10	4	7	17	11	12	16	13
Gaza Strip & West Bank	10	18	9	16	3	14	2	3	5	6	4
Iran	285	443	435	371	411	370	461	445	445	455	871
Iraq	915	941	1 012	739	1 449	1 113	1 176	1 550	1 316	1 319	2 413
Israel	51	44	50	57	115	111	167	121	99	111	104
Jordan	91	68	122	73	114	124	166	131	94	106	138
Kuwait	79	104	57	38	42	38	29	82	54	54	64
Lebanon	701	931	1 086	802	1 136	935	1 017	871	960	935	779
Oman	10	3	5	1	4	3	13	10	8	11	18
Qatar	6	4	11	5	3	8	8	10	5	6	8
Saudi Arabia	20	25	25	24	29	15	41	23	31	38	34
Syria	106	120	119	104	131	126	152	158	138	126	166
Turkey	237	224	183	226	296	275	230	224	118	135	153
United Arab Emirates	12	29	23	36	63	58	77	87	83	86	80
Yemen	5	2	10	4	15	3	3	2	5	-	3
Middle East nfd	4	7	11	14	20	15	28	15	14	22	31
Total	2 538	2 971	3 160	2 520	3 835	3 215	3 587	3 743	3 387	3 426	4 879
Total North Africa & the Middle East	3 051	3 491	3 778	3 020	4 888	4 869	5 431	5 166	4 485	4 017	5 511
Southeast Asia											
Brunei	5	-	10	2	7	12	6	4	2	1	9
Burma (Myanmar)	91	65	109	111	92	93	142	165	405	420	365
Cambodia	145	99	168	211	240	183	208	205	247	247	282
East Timor (e)	-	-	3	3	3	9	4	6	6	12	3
Indonesia (e)	953	1 209	1 651	1 623	1 300	1 138	806	851	736	733	668
Laos	25	11	35	26	22	26	28	30	46	44	33
Malaysia	348	436	574	403	503	819	652	628	573	647	493
Philippines	1 874	1 742	1 664	1 312	1 490	1 828	1 915	2 072	2 086	2 248	2 199
Singapore	157	212	350	301	307	423	559	427	279	353	236
Thailand	216	202	295	468	434	369	473	554	631	641	693
Vietnam	875	535	602	714	928	820	838	1 142	1 186	1 076	1 090
Total Southeast Asia	4 689	4 511	5 461	5 174	5 326	5 720	5 631	6 084	6 197	6 422	6 071

(e) East Timor previously recorded under Indonesia, care should be taken when interpreting the data.

New South Wales

Table 2.1 (continued) **Settler arrivals by birthplace, 1998-99 to 2008-09**

Birthplace	1998-99	1999-00	2000-01	2001-02	2002-03	2003-04	2004-05	2005-06	2006-07	2007-08	2008-09
Northeast Asia											
China (f)	3 902	4 407	5 945	4 214	4 221	5 010	6 273	5 296	5 450	5 612	6 744
Hong Kong (g)	1 101	838	873	495	496	525	602	495	437	346	355
Japan	236	226	248	194	221	229	257	240	213	206	184
Korea	430	521	900	491	582	664	1 020	1 156	1 074	1 289	1 308
Macau (g)	29	27	15	15	5	12	12	9	11	9	10
Mongolia	-	2	-	1	8	3	2	5	2	5	11
Taiwan	608	636	1 009	680	364	314	242	191	158	207	182
Total Northeast Asia	6 306	6 657	8 990	6 090	5 897	6 757	8 408	7 392	7 345	7 674	8 794
Southern Asia											
Bangladesh	345	631	750	306	302	405	492	575	522	639	836
Bhutan	1	-	2	-	1	-	-	-	1	1	172
India	1 329	2 352	3 137	2 388	2 759	3 639	4 156	4 615	5 250	5 188	5 547
Maldives	1	-	1	-	-	-	4	-	1	2	-
Nepal	25	78	154	110	127	150	191	218	295	379	461
Pakistan	388	596	786	495	444	578	762	680	740	632	739
Sri Lanka	422	546	884	713	618	506	762	618	673	799	929
Total Southern Asia	2 511	4 203	5 714	4 012	4 251	5 278	6 367	6 706	7 482	7 640	8 684
Central Asia											
Afghanistan	379	470	275	290	443	507	830	1 053	648	422	460
Armenia (d)	-	6	2	4	8	8	5	4	8	4	8
Azerbaijan (d)	1	3	1	8	3	3	4	3	4	3	4
Georgia (d)	-	5	6	5	7	1	5	2	8	3	4
Kazakhstan (d)	-	7	9	5	7	22	7	24	7	13	20
Kyrgyzstan (d)	1	6	1	2	1	5	3	6	-	5	2
Tajikistan (d)	-	-	1	2	1	-	-	3	-	-	2
Turkmenistan (d)	-	-	-	1	-	2	-	5	2	-	-
Uzbekistan (d)	3	6	2	4	6	11	11	16	15	15	21
Total Central Asia	384	503	297	321	476	559	865	1 116	692	465	521
Northern America											
Bermuda	1	-	1	1	3	-	3	1	1	-	1
Canada	236	251	280	206	226	211	235	299	240	217	256
USA	435	419	508	418	523	496	621	645	546	548	530
Total Northern America	672	670	789	625	752	707	859	945	787	765	787

(d) As reliable data are not available for component countries prior to 1995-96, care should be taken when interpreting the data.

(f) Excluding SARs and Taiwan.

(g) SAR of China.

New South Wales

Table 2.1 (continued) **Settler arrivals by birthplace, 1998-99 to 2008-09**

Birthplace	1998-99	1999-00	2000-01	2001-02	2002-03	2003-04	2004-05	2005-06	2006-07	2007-08	2008-09
South America, Central America & the Caribbean											
<i>South America</i>											
Argentina	36	21	45	21	76	167	179	110	80	62	49
Bolivia	19	12	13	12	6	16	5	8	9	10	5
Brazil	44	53	38	68	92	94	194	162	168	152	170
Chile	93	76	76	77	105	106	91	93	68	77	83
Colombia	60	64	79	97	117	94	134	131	112	113	123
Ecuador	10	14	29	19	32	43	32	38	19	21	26
Falkland Islands	-	-	-	1	-	-	-	1	-	-	-
French Guiana	1	-	1	-	-	1	-	-	-	-	-
Guyana	1	5	1	-	-	-	-	2	2	2	1
Paraguay	2	3	1	6	-	2	1	7	2	3	4
Peru	83	80	89	71	108	102	122	175	160	139	140
Suriname	1	-	-	-	5	4	1	-	-	3	1
Uruguay	18	10	17	16	30	38	46	52	18	28	16
Venezuela	26	15	26	25	37	22	69	90	62	101	117
South America nfd	-	-	-	-	-	-	-	-	1	1	-
Total	394	353	415	413	608	689	874	869	701	712	735
<i>Central America</i>											
Belize	-	-	1	-	1	-	-	-	-	-	1
Costa Rica	-	3	2	3	-	-	3	5	2	3	6
El Salvador	3	8	7	3	3	13	5	10	4	11	10
Guatemala	2	3	5	3	1	4	-	3	5	4	6
Honduras	-	-	-	1	3	3	3	1	1	-	-
Mexico	13	13	6	24	21	16	26	69	49	73	77
Nicaragua	3	1	-	3	2	-	1	3	3	3	2
Panama	1	1	1	1	1	2	3	6	2	3	2
Central America nfd	-	-	1	-	-	1	-	-	1	-	-
Total	22	29	23	38	32	39	41	97	67	97	104
<i>The Caribbean</i>											
Antigua & Barbuda	-	-	-	-	-	-	-	-	-	-	1
Aruba	-	1	-	-	-	-	-	-	-	-	-
Bahamas	1	2	1	2	1	2	1	1	-	-	-
Barbados	1	-	1	1	-	1	2	1	-	4	-
Cayman Islands	1	-	1	1	-	1	1	-	1	1	-
Cuba	6	5	6	7	8	10	8	11	5	18	9
Dominica	-	-	-	-	-	1	-	-	-	-	-
Dominican Republic	1	-	-	3	-	1	-	3	3	6	2
Grenada	-	1	-	-	-	-	-	1	-	2	-
Guadeloupe	-	-	-	1	1	-	-	-	-	-	-
Haiti	-	1	-	-	-	-	-	3	-	-	-
Jamaica	4	3	10	4	3	3	7	7	6	6	13
Martinique	-	1	-	-	-	-	-	-	-	-	-
Montserrat	-	-	-	-	-	-	-	1	-	-	-
Netherlands Antilles	1	-	-	4	-	-	-	3	1	-	-
Puerto Rico	-	-	-	2	1	1	-	-	2	1	-

New South Wales

Table 2.1 (continued) **Settler arrivals by birthplace, 1998-99 to 2008-09**

Birthplace	1998-99	1999-00	2000-01	2001-02	2002-03	2003-04	2004-05	2005-06	2006-07	2007-08	2008-09
<i>The Caribbean (continued)</i>											
St Kitts & Nevis	-	-	-	-	-	-	-	-	-	-	1
St Lucia	-	-	-	-	-	-	-	2	2	-	-
St Vincent & The Grenadines	-	1	-	-	-	-	-	1	-	-	2
Trinidad & Tobago	1	4	3	2	-	5	8	6	1	5	3
Turks & Caicos Islands	-	-	-	-	-	-	-	1	-	-	-
Virgin Islands United States	-	-	-	-	-	-	-	1	-	-	-
Caribbean nfd	-	-	-	-	-	-	-	-	1	-	-
Total	16	19	22	27	14	25	27	42	22	43	31
Total South America, Central America & The Caribbean	432	401	460	478	654	753	942	1 008	790	852	870
Sub-Saharan Africa											
<i>Central & West Africa</i>											
Benin	-	-	-	-	-	-	-	-	4	9	4
Burkina Faso	-	-	-	3	-	-	-	-	-	-	-
Cameroon	1	1	-	1	5	3	2	1	3	6	-
Cape Verde	-	-	-	-	-	-	-	-	-	1	-
Central African Republic	-	-	-	-	-	-	-	-	-	2	-
Chad	-	-	-	-	-	-	1	-	-	2	-
Congo	-	-	4	2	3	33	59	34	44	9	38
Congo Democratic Republic	-	3	2	3	-	4	4	27	154	144	98
Cote D'Ivoire	-	-	1	-	2	2	30	26	29	13	21
Gabon	-	-	-	-	-	-	2	-	-	1	1
Gambia	2	-	-	1	2	-	-	2	5	1	-
Ghana	112	65	56	42	72	73	88	115	121	93	71
Guinea	-	-	-	5	10	6	58	46	49	35	19
Guinea-Bissau	-	-	-	1	1	-	-	1	-	-	-
Liberia	-	-	2	25	55	37	254	190	169	49	68
Mali	-	-	-	-	-	1	-	-	-	-	-
Mauritania	1	-	-	-	-	-	-	1	3	13	-
Niger	-	3	6	1	-	-	2	3	3	1	5
Nigeria	56	30	33	49	41	35	53	69	75	59	83
Senegal	2	3	1	8	1	3	4	5	2	8	3
Sierra Leone	4	55	63	160	95	64	250	332	317	160	124
Togo	-	-	3	1	1	2	-	1	13	31	14
Total	178	160	171	302	288	263	807	853	991	637	549
<i>Southern & East Africa</i>											
Angola	3	5	-	2	1	-	2	1	6	2	2
Botswana	1	6	9	4	4	6	11	6	14	8	8
Burundi	1	-	-	1	5	22	66	78	174	64	46
Djibouti	1	3	1	1	1	1	2	-	1	1	-
Eritrea (h)	13	17	21	31	10	19	21	17	21	7	31
Ethiopia (h)	62	65	55	65	134	120	56	63	87	74	130
Kenya	48	35	66	79	153	140	158	158	159	98	127
Lesotho	-	-	1	3	1	-	1	1	2	-	-
Madagascar	1	-	-	1	2	1	-	1	1	-	-
Malawi	4	4	4	9	3	5	8	2	6	5	4

(h) As reliable data are not available for component countries prior to 1995-96, care should be taken when interpreting the data.

New South Wales

Table 2.1 (continued) **Settler arrivals by birthplace, 1998-99 to 2008-09**

Birthplace	1998-99	1999-00	2000-01	2001-02	2002-03	2003-04	2004-05	2005-06	2006-07	2007-08	2008-09
<i>Southern & East Africa</i> (continued)											
Mauritius	20	40	34	33	34	45	44	25	53	48	41
Mozambique	-	4	3	3	2	4	4	3	-	5	4
Namibia	6	11	13	21	14	3	19	5	5	3	14
Reunion	4	-	-	1	-	1	-	1	-	-	2
Rwanda	-	1	1	-	1	12	15	10	28	8	8
St Helena	-	-	-	-	1	-	-	1	-	-	-
Seychelles	2	4	-	5	2	11	-	1	3	1	2
Somalia	115	64	72	74	45	32	58	58	54	23	107
South Africa	1 924	2 016	2 148	1 912	1 454	1 732	1 464	995	848	1 070	1 505
Swaziland	5	2	1	3	2	1	-	2	1	-	5
Tanzania	2	4	7	10	7	12	49	58	124	99	47
Uganda	7	6	8	18	25	38	75	39	55	42	30
Zambia	28	30	31	43	24	36	16	16	18	25	24
Zimbabwe	99	112	167	199	205	332	342	346	251	232	180
Southern & East Africa nfd	-	-	1	-	-	1	-	-	-	-	-
Total	2 346	2 429	2 643	2 518	2 130	2 574	2 411	1 887	1 911	1 815	2 317
Total											
Sub-Saharan Africa	2 524	2 589	2 814	2 820	2 418	2 837	3 218	2 740	2 902	2 452	2 866
Supplementary codes (i)											
Europe & USSR nfd	1	-	-	-	-	-	-	-	-	-	-
Fmr USSR	288	273	275	301	275	223	267	269	162	181	235
Total	289	273	275	301	275	223	267	269	162	181	235
Not stated	21	38	24	16	4	16	2	4	5	13	2
Total all countries	35 141	39 311	46 745	35 301	36 431	40 561	44 746	44 661	43 835	43 520	47 030

(i) Supplementary codes cannot be classified to any major region in the Standard Australian Classification of Countries (SACC). This may lead to under reporting of their component countries in the rest of the table, care should be taken when interpreting the data.

Victoria

Table 3.1 Settler arrivals by birthplace, 1998-99 to 2008-09

Birthplace	1998-99	1999-00	2000-01	2001-02	2002-03	2003-04	2004-05	2005-06	2006-07	2007-08	2008-09
Oceania											
<i>Australia & External Territories (a)</i>	47	58	131	82	81	95	90	117	127	172	160
<i>New Zealand</i>	2 841	3 663	4 806	3 156	2 242	2 549	2 912	3 168	4 178	4 786	4 467
<i>Melanesia</i>											
New Caledonia	1	6	-	2	-	-	-	1	-	1	-
Papua New Guinea	3	6	8	8	13	12	7	7	12	10	7
Solomon Islands	1	3	2	-	2	7	1	-	3	3	3
Vanuatu	5	1	-	3	3	4	-	6	2	3	1
Total	10	16	10	13	18	23	8	14	17	17	11
<i>Micronesia</i>											
Kiribati	2	-	-	2	1	1	1	-	-	-	3
Micronesia Federated States	-	-	-	1	3	-	-	-	1	-	-
Nauru	1	2	3	12	5	1	4	4	1	1	3
Micronesia nfd	-	1	-	-	-	-	-	-	-	-	-
Total	3	3	3	15	9	2	5	4	2	1	6
<i>Polynesia (excluding Hawaii)</i>											
Cook Islands	57	68	61	25	24	28	32	27	25	44	71
Fiji	245	288	331	265	279	312	316	331	311	364	310
French Polynesia	2	-	2	-	-	-	2	-	1	-	5
Niue	9	10	7	3	1	5	2	2	5	18	12
Samoa	183	174	233	116	97	111	145	126	90	133	156
Samoa American	4	2	-	5	2	-	1	-	-	3	1
Tokelau	1	-	1	2	-	-	1	-	-	6	4
Tonga	43	58	70	38	39	44	42	46	27	18	29
Tuvalu	-	1	-	-	-	-	1	2	-	-	1
Total	544	601	705	454	442	500	542	534	459	586	589
Total Oceania	3 445	4 341	5 655	3 720	2 792	3 169	3 557	3 837	4 783	5 562	5 233
Europe											
<i>United Kingdom & Ireland</i>											
UK	1 190	1 312	1 529	1 446	2 020	2 854	2 877	3 558	3 221	3 189	3 033
Ireland	81	106	109	91	114	177	163	171	169	194	233
Total	1 271	1 418	1 638	1 537	2 134	3 031	3 040	3 729	3 390	3 383	3 266
<i>Western Europe</i>											
Austria	13	26	23	17	19	23	29	17	18	12	19
Belgium	11	16	12	13	12	15	19	15	14	16	8
France	58	35	38	47	65	69	74	54	58	55	62
Germany	162	165	174	158	190	145	193	216	210	174	172
Luxembourg	-	-	-	-	-	-	-	3	-	-	-
Monaco	-	-	-	-	-	-	-	-	-	-	1
Netherlands	60	88	69	60	104	92	79	131	84	124	103
Switzerland	22	32	29	42	33	32	39	29	32	36	24
Total	326	362	345	337	423	376	433	465	416	417	389

(a) The Australia component consists of persons born in Australia who have settled overseas and returned.

Victoria

Table 3.1 (continued) **Settler arrivals by birthplace, 1998-99 to 2008-09**

Birthplace	1998-99	1999-00	2000-01	2001-02	2002-03	2003-04	2004-05	2005-06	2006-07	2007-08	2008-09
<i>Northern Europe</i>											
Denmark	13	22	17	24	19	13	18	14	15	16	20
Finland	15	4	10	9	9	12	11	15	19	16	21
Iceland	2	1	-	-	-	1	-	-	1	1	-
Norway	1	12	6	2	10	6	13	15	12	16	11
Sweden	16	22	29	32	24	34	30	41	27	40	36
Total	47	61	62	67	62	66	72	85	74	89	88
<i>Southern Europe</i>											
Gibraltar	2	1	-	-	-	1	2	1	-	-	-
Italy	58	65	47	87	39	49	38	62	60	53	52
Malta	22	9	14	10	40	25	51	16	64	47	28
Portugal	1	4	9	2	7	6	17	9	10	7	9
Spain	10	7	17	8	25	14	27	16	18	17	30
Total	93	86	87	107	111	95	135	104	152	124	119
<i>South Eastern Europe</i>											
Albania	32	29	25	36	218	74	75	78	58	50	66
Bosnia & Herzegovina (b)	459	242	304	149	72	37	34	43	39	52	32
Bulgaria	18	30	34	22	22	47	40	36	35	29	17
Croatia (b)	229	227	241	131	83	44	19	33	33	22	34
Cyprus	16	12	22	18	17	31	10	11	13	8	6
Fmr Yugo Rep of Macedonia (b)	165	123	165	154	154	184	147	164	147	158	156
Greece	53	35	34	43	37	35	27	39	38	38	29
Moldava	2	2	-	3	3	10	1	9	7	10	3
Montenegro (b)	-	-	-	-	-	-	-	-	1	8	2
Romania	132	112	113	105	120	99	107	127	104	78	87
Serbia (b)	-	-	-	-	-	-	-	-	12	55	54
Fmr Serbia & Montenegro (b)	991	833	896	693	562	307	244	143	174	114	79
Slovenia (b)	9	8	6	1	1	6	4	-	5	14	7
Total	2 106	1 653	1 840	1 355	1 289	874	708	683	666	636	572
<i>Eastern Europe</i>											
Belarus (c)	3	6	5	4	2	4	14	14	8	7	14
Czech Republic (d)	1	3	5	3	2	4	5	8	11	9	7
Estonia (c)	-	2	2	4	2	4	5	2	2	2	3
Former Czechoslovakia (d)	17	21	21	29	29	24	18	16	15	18	15
Hungary	11	13	9	20	26	21	24	31	34	26	42
Latvia (c)	3	4	6	9	-	11	8	6	4	10	10
Lithuania (c)	11	8	6	9	3	13	6	7	5	3	6
Poland	82	56	69	66	72	117	102	77	73	90	84
Russian Federation (c)	11	11	16	19	20	54	148	124	86	136	174
Slovakia (d)	1	2	-	2	1	7	3	3	4	8	1
Ukraine	13	28	27	40	24	85	64	75	76	51	51
Eastern Europe nfd	-	-	-	-	-	1	-	-	-	-	-
Total	153	154	166	205	181	345	397	363	318	360	407
Total Europe	3 996	3 734	4 138	3 608	4 200	4 787	4 785	5 429	5 016	5 009	4 841

(b) As reliable data are not available for component countries prior to 1995-96, care should be taken when interpreting the data. Serbia and Montenegro was previously called the Federal Republic of Yugoslavia and since 1998-99 contains the Former Yugoslavia nfd.

(c) As reliable data are not available for component countries prior to 1995-96, care should be taken when interpreting the data.

(d) As reliable data are not available for component countries prior to 1995-96, care should be taken when interpreting the data.

Victoria

Table 3.1 (continued) **Settler arrivals by birthplace, 1998-99 to 2008-09**

Birthplace	1998-99	1999-00	2000-01	2001-02	2002-03	2003-04	2004-05	2005-06	2006-07	2007-08	2008-09
North Africa & The Middle East											
<i>North Africa</i>											
Algeria	8	2	8	6	7	7	5	7	5	1	2
Egypt	116	100	128	121	199	307	308	288	269	230	275
Libya	2	1	7	4	8	5	6	9	4	10	2
Morocco	6	8	2	5	18	10	10	11	14	18	14
Sudan	158	106	257	326	919	1 530	2 022	1 332	854	279	302
Tunisia	2	1	4	-	3	-	1	1	3	-	2
North Africa nfd	1	-	-	-	-	-	-	-	-	-	-
Total	293	218	406	462	1 154	1 859	2 352	1 648	1 149	538	597
<i>The Middle East</i>											
Bahrain	-	4	6	1	10	6	8	9	16	5	10
Gaza Strip & West Bank	4	6	6	4	1	1	2	-	3	-	1
Iran	115	171	169	98	164	198	206	175	263	247	475
Iraq	419	527	385	396	768	549	595	624	666	619	1 073
Israel	42	48	38	81	88	157	150	141	140	117	113
Jordan	24	25	26	32	16	47	47	43	26	33	51
Kuwait	23	60	33	11	34	35	32	19	45	40	39
Lebanon	200	239	332	230	375	268	338	317	343	384	285
Oman	1	6	4	3	8	2	5	9	11	7	10
Qatar	1	-	5	4	2	1	2	3	10	7	8
Saudi Arabia	17	9	13	17	20	25	26	22	36	27	44
Syria	48	44	72	36	65	62	62	57	76	68	78
Turkey	243	231	201	286	338	343	312	237	156	179	230
United Arab Emirates	20	12	14	54	89	59	85	101	95	102	114
Yemen	4	15	1	3	3	14	4	4	2	7	4
Middle East nfd	1	5	2	6	3	15	26	14	7	6	4
Total	1 162	1 402	1 307	1 262	1 984	1 782	1 900	1 775	1 895	1 848	2 539
Total North Africa & the Middle East	1 455	1 620	1 713	1 724	3 138	3 641	4 252	3 423	3 044	2 386	3 136
Southeast Asia											
Brunei	9	7	16	6	17	10	20	12	4	4	4
Burma (Myanmar)	17	32	52	45	25	31	158	320	632	901	791
Cambodia	124	98	204	186	279	279	295	280	314	311	319
East Timor (e)	-	-	10	4	4	8	13	17	3	11	10
Indonesia (e)	504	635	910	1 074	709	601	534	406	376	373	378
Laos	12	3	9	6	8	13	35	6	37	11	16
Malaysia	420	574	847	773	1 008	1 439	1 082	1 062	1 111	1 215	1 214
Philippines	548	596	666	634	824	1 165	1 161	1 340	1 644	1 717	1 607
Singapore	149	211	396	406	500	729	881	829	482	512	377
Thailand	95	110	171	273	257	247	278	417	542	696	626
Vietnam	867	601	697	760	1 016	876	935	910	1 208	1 000	1 057
Total Southeast Asia	2 745	2 867	3 978	4 167	4 647	5 398	5 392	5 599	6 353	6 751	6 399

(e) East Timor previously recorded under Indonesia, care should be taken when interpreting the data.

Victoria

Table 3.1 (continued) **Settler arrivals by birthplace, 1998-99 to 2008-09**

Birthplace	1998-99	1999-00	2000-01	2001-02	2002-03	2003-04	2004-05	2005-06	2006-07	2007-08	2008-09
Northeast Asia											
China (f)	1 555	1 651	1 835	1 607	1 611	2 545	3 059	3 142	3 976	4 568	5 919
Hong Kong (g)	338	259	383	232	298	338	280	266	287	264	251
Japan	95	101	91	118	101	124	126	164	165	158	129
Korea	65	52	131	101	130	166	317	435	331	470	503
Macau (g)	16	5	7	10	12	8	13	4	4	4	9
Mongolia	-	-	-	-	-	-	9	3	7	1	5
Taiwan	189	275	432	248	166	138	120	198	137	133	141
Total Northeast Asia	2 258	2 343	2 879	2 316	2 318	3 319	3 924	4 212	4 907	5 598	6 957
Southern Asia											
Bangladesh	29	92	67	54	76	82	177	167	187	248	291
Bhutan	-	-	-	-	-	-	-	-	-	1	40
India	694	1 435	2 209	1 835	2 068	3 236	3 491	4 295	4 826	5 577	6 191
Maldives	-	1	-	4	3	1	1	-	3	5	1
Nepal	4	16	47	34	33	44	64	44	95	112	100
Pakistan	106	159	273	197	197	310	387	364	467	434	505
Sri Lanka	363	534	858	1 034	977	791	1 177	1 329	1 464	1 979	2 081
Total Southern Asia	1 196	2 237	3 454	3 158	3 354	4 464	5 297	6 199	7 042	8 356	9 209
Central Asia											
Afghanistan	275	181	138	190	265	364	326	738	729	625	497
Armenia (d)	6	6	1	3	2	3	-	1	3	3	1
Azerbaijan (d)	-	9	-	2	-	3	3	3	-	-	-
Georgia (d)	1	3	3	3	1	4	-	1	1	5	3
Kazakhstan (d)	3	4	4	2	4	6	10	9	15	15	18
Kyrgyzstan (d)	2	-	-	1	2	8	4	11	5	10	3
Tajikistan (d)	-	1	-	-	1	-	-	1	2	-	-
Turkmenistan (d)	-	-	-	-	3	-	-	1	3	-	-
Uzbekistan (d)	4	1	5	8	3	11	6	15	19	14	12
Total Central Asia	291	205	151	209	281	399	349	780	777	672	534
Northern America											
Bermuda	1	1	4	7	2	-	-	1	-	2	2
Canada	90	116	114	105	119	150	134	131	138	136	180
USA	218	233	261	271	292	272	359	324	340	329	301
Total Northern America	309	350	379	383	413	422	493	456	478	467	483

(d) As reliable data are not available for component countries prior to 1995-96, care should be taken when interpreting the data.

(f) Excluding SARs and Taiwan.

(g) SAR of China.

Victoria

Table 3.1 (continued) **Settler arrivals by birthplace, 1998-99 to 2008-09**

Birthplace	1998-99	1999-00	2000-01	2001-02	2002-03	2003-04	2004-05	2005-06	2006-07	2007-08	2008-09
South America, Central America & the Caribbean											
<i>South America</i>											
Argentina	15	14	17	28	38	102	69	68	18	25	27
Bolivia	-	1	1	1	1	-	2	2	-	-	1
Brazil	9	20	25	34	42	36	41	72	76	70	60
Chile	69	29	37	33	50	41	51	43	26	32	39
Colombia	8	7	20	20	43	36	49	39	45	55	73
Ecuador	1	1	2	1	2	3	4	3	3	9	2
Falkland Islands	1	-	-	-	-	-	-	-	-	-	-
Guyana	-	1	1	-	-	2	-	-	2	1	2
Paraguay	-	-	4	5	2	-	1	6	-	1	-
Peru	8	8	13	21	38	18	29	53	53	42	28
Suriname	-	-	-	-	-	-	-	1	-	-	-
Uruguay	5	1	4	7	14	8	14	9	8	4	10
Venezuela	1	2	3	6	6	8	22	28	34	48	59
South America nfd	-	-	-	2	-	-	-	-	-	-	-
Total	117	84	127	158	236	254	282	324	265	287	301
<i>Central America</i>											
Belize	-	1	-	-	-	-	-	-	-	-	-
Costa Rica	1	-	-	2	1	-	1	-	1	1	-
El Salvador	23	8	9	15	12	6	18	11	9	10	20
Guatemala	3	3	4	4	1	2	1	2	1	2	1
Honduras	1	-	-	-	-	-	1	2	1	3	-
Mexico	3	2	10	8	25	16	18	46	49	48	73
Nicaragua	2	1	-	-	-	-	-	-	-	-	1
Panama	-	-	-	-	1	-	1	1	-	1	1
Central America nfd	-	2	-	-	-	-	-	-	1	-	-
Total	33	17	23	29	40	24	40	62	62	65	96
<i>The Caribbean</i>											
Antigua & Barbuda	-	-	-	-	-	-	-	1	1	-	-
Bahamas	-	-	-	-	-	2	-	-	-	-	-
Barbados	-	-	1	-	1	-	-	2	-	3	-
Cayman Islands	-	-	-	-	-	-	-	-	-	3	1
Cuba	5	2	4	3	4	8	5	9	8	8	10
Dominica	-	-	-	-	-	1	-	-	-	1	-
Dominican Republic	3	2	-	1	1	2	-	-	-	-	3
Guadeloupe	-	-	-	1	1	-	1	-	-	-	1
Haiti	-	-	-	-	1	-	-	-	-	-	-
Jamaica	1	1	5	4	1	1	2	5	6	3	3
Montserrat	-	-	-	-	-	-	-	-	-	1	-
Puerto Rico	-	-	-	-	-	-	1	-	-	1	-
St Lucia	-	-	-	-	-	-	1	-	-	-	-
Trinidad & Tobago	-	-	1	1	1	11	9	3	2	2	4
Total	9	5	11	10	10	25	19	20	17	22	22
Total South America, Central America & The Caribbean	159	106	161	197	286	303	341	406	344	374	419

Victoria

Table 3.1 (continued) Settler arrivals by birthplace, 1998-99 to 2008-09

Birthplace	1998-99	1999-00	2000-01	2001-02	2002-03	2003-04	2004-05	2005-06	2006-07	2007-08	2008-09
Sub-Saharan Africa											
<i>Central & West Africa</i>											
Benin	-	-	-	-	-	-	1	-	4	8	1
Burkina Faso	-	-	-	-	1	-	-	-	-	-	-
Cameroon	-	1	-	2	2	-	1	2	2	9	-
Cape Verde	-	-	-	-	-	-	-	-	1	-	-
Chad	-	-	-	-	-	-	-	1	-	-	-
Congo	-	-	4	2	1	7	11	21	7	2	1
Congo Democratic Republic	5	-	1	1	1	2	3	41	44	31	19
Cote D'Ivoire	2	-	-	-	2	-	29	8	9	30	20
Gambia	-	-	-	-	1	-	-	1	-	1	-
Ghana	11	18	5	17	7	33	17	28	60	26	21
Guinea	-	-	3	-	2	1	21	12	12	12	9
Guinea-Bissau	-	-	-	2	-	-	-	-	-	-	-
Liberia	-	-	3	-	2	2	176	54	69	47	68
Mali	-	-	-	-	1	-	1	1	-	-	-
Mauritania	-	-	-	-	-	-	1	1	-	1	-
Niger	-	1	1	1	-	-	-	-	1	1	2
Nigeria	16	10	31	30	16	19	29	33	46	48	66
Senegal	-	2	-	1	2	1	2	3	-	-	2
Sierra Leone	-	-	-	6	1	9	15	35	44	26	11
Togo	-	-	-	-	-	-	-	1	10	24	3
Total	34	32	48	62	39	74	307	242	309	266	223
<i>Southern & East Africa</i>											
Angola	-	-	1	7	-	-	-	1	3	-	1
Botswana	3	1	4	4	7	1	5	3	10	5	9
Burundi	-	1	-	-	-	1	58	67	20	16	4
Comoros	-	-	3	-	1	-	-	-	3	-	-
Djibouti	8	2	2	2	4	1	6	1	5	1	3
Eritrea (h)	120	79	54	53	59	74	67	68	49	58	66
Ethiopia (h)	187	171	190	183	254	299	276	228	282	248	310
Kenya	43	51	52	87	126	151	241	162	161	111	100
Lesotho	-	-	1	2	1	1	4	-	-	-	-
Madagascar	5	1	-	-	5	1	-	-	1	2	1
Malawi	2	2	4	2	2	3	9	8	6	4	1
Mauritius	21	52	79	78	72	138	106	135	181	219	298

(h) As reliable data are not available for component countries prior to 1995-96, care should be taken when interpreting the data.

Victoria

Table 3.1 (continued) **Settler arrivals by birthplace, 1998-99 to 2008-09**

Birthplace	1998-99	1999-00	2000-01	2001-02	2002-03	2003-04	2004-05	2005-06	2006-07	2007-08	2008-09
<i>Southern & East Africa</i> (continued)											
Mozambique	2	-	-	4	8	1	2	1	-	4	4
Namibia	3	2	1	2	3	5	13	6	8	8	6
Reunion	-	-	-	-	-	-	-	-	-	-	1
Rwanda	-	-	-	1	-	-	6	2	4	3	15
Seychelles	4	6	1	11	13	9	14	3	16	4	8
Somalia	241	137	184	218	116	125	85	99	109	43	106
South Africa	449	677	710	809	644	886	579	560	502	711	836
Swaziland	1	1	5	1	1	2	-	2	3	2	1
Tanzania	5	5	1	5	7	5	46	71	21	14	24
Uganda	5	5	6	5	8	7	32	28	51	21	26
Zambia	9	11	12	6	5	17	15	12	11	14	11
Zimbabwe	31	45	35	92	86	131	115	84	71	114	113
Southern & East Africa nfd	-	-	-	-	1	-	-	-	-	-	-
Total	1 139	1 249	1 345	1 572	1 423	1 858	1 679	1 541	1 517	1 602	1 944
Total											
Sub-Saharan Africa	1 173	1 281	1 393	1 634	1 462	1 932	1 986	1 783	1 826	1 868	2 167
Supplementary codes (i)											
Fmr USSR	224	229	255	253	212	191	199	170	122	152	179
Total	224	229	255	253	212	191	199	170	122	152	179
Not stated	40	6	3	5	6	3	6	3	6	18	2
Total all countries	17 291	19 319	24 159	21 374	23 109	28 028	30 581	32 297	34 698	37 213	39 559

(i) Supplementary codes cannot be classified to any major region in the Standard Australian Classification of Countries (SACC). This may lead to under reporting of their component countries in the rest of the table, care should be taken when interpreting the data.

Queensland

Table 4.1 Settler arrivals by birthplace, 1998-99 to 2008-09

Birthplace	1998-99	1999-00	2000-01	2001-02	2002-03	2003-04	2004-05	2005-06	2006-07	2007-08	2008-09
Oceania											
<i>Australia & External Territories (a)</i>	71	92	122	94	102	126	145	155	169	243	267
<i>New Zealand</i>	7 268	8 080	8 389	5 669	5 037	6 231	7 736	8 866	11 278	13 009	11 701
<i>Melanesia</i>											
New Caledonia	-	9	6	5	2	4	7	2	2	2	10
Papua New Guinea	92	56	102	86	161	129	138	152	182	196	184
Solomon Islands	16	23	19	24	7	18	29	7	20	15	14
Vanuatu	3	7	4	7	9	9	4	6	9	11	6
<i>Total</i>	111	95	131	122	179	160	178	167	213	224	214
<i>Micronesia</i>											
Guam	-	-	-	-	3	7	2	1	-	-	1
Kiribati	2	1	4	4	3	3	4	3	14	3	5
Micronesia Federated States	-	-	-	-	-	-	2	-	-	2	-
Nauru	2	-	-	-	2	3	3	2	5	1	4
Northern Mariana Islands	1	-	-	-	-	1	-	-	-	-	-
Palau	-	1	-	-	-	-	-	-	-	-	-
<i>Total</i>	5	2	4	4	8	14	11	6	19	6	10
<i>Polynesia (excluding Hawaii)</i>											
Cook Islands	28	31	67	37	31	35	30	34	47	103	123
Fiji	268	303	381	263	253	336	302	365	299	420	492
French Polynesia	-	5	3	1	2	1	3	1	-	3	4
Niue	18	17	21	10	9	11	15	12	10	34	21
Samoa	374	350	354	224	154	250	266	191	142	271	360
Samoa American	4	4	-	4	1	9	4	5	3	8	5
Tokelau	3	4	14	4	9	10	9	7	7	17	13
Tonga	62	79	68	44	29	44	70	51	39	40	44
Tuvalu	4	6	5	1	4	2	3	2	2	-	2
<i>Total</i>	761	799	913	588	492	698	702	668	549	896	1 064
Total Oceania	8 216	9 068	9 559	6 477	5 818	7 229	8 772	9 862	12 228	14 378	13 256
Europe											
<i>United Kingdom & Ireland</i>											
UK	1 896	2 030	2 061	1 850	2 676	4 160	4 189	5 068	5 569	5 954	5 396
Ireland	67	68	85	63	77	159	116	202	229	256	319
<i>Total</i>	1 963	2 098	2 146	1 913	2 753	4 319	4 305	5 270	5 798	6 210	5 715
<i>Western Europe</i>											
Austria	15	22	16	35	23	17	17	19	16	21	22
Belgium	10	7	18	20	10	11	6	21	18	21	10
France	36	30	24	48	50	64	60	52	82	62	72
Germany	154	141	170	152	153	164	183	224	259	246	245
Liechtenstein	-	-	-	-	-	-	-	-	1	-	-
Luxembourg	2	2	-	-	-	-	3	-	1	1	-
Netherlands	99	108	91	106	91	105	123	140	169	147	116
Switzerland	35	47	44	42	48	33	42	66	42	49	53
<i>Total</i>	351	357	363	403	375	394	434	522	588	547	518

(a) The Australia component consists of persons born in Australia who have settled overseas and returned.

Queensland

Table 4.1 (continued) **Settler arrivals by birthplace, 1998-99 to 2008-09**

Birthplace	1998-99	1999-00	2000-01	2001-02	2002-03	2003-04	2004-05	2005-06	2006-07	2007-08	2008-09
<i>Northern Europe</i>											
Denmark	22	18	22	29	12	36	39	23	21	22	24
Finland	9	9	18	8	-	15	15	21	8	18	9
Greenland	-	-	1	-	-	-	-	-	-	-	-
Iceland	-	-	1	1	1	3	1	-	9	4	-
Norway	8	9	5	11	19	6	14	17	17	8	11
Sweden	21	31	17	31	45	32	47	20	29	39	45
Total	60	67	64	80	77	92	116	81	84	91	89
<i>Southern Europe</i>											
Andorra	-	-	-	-	-	-	-	-	-	1	-
Gibraltar	-	1	-	1	1	-	1	1	2	6	2
Italy	18	16	24	21	22	31	38	19	27	30	30
Malta	2	5	1	3	2	8	9	3	4	1	6
Portugal	5	3	12	4	7	3	15	11	7	14	10
Spain	8	4	10	13	22	18	13	23	22	21	32
Total	33	29	47	42	54	60	76	57	62	73	80
<i>South Eastern Europe</i>											
Albania	2	8	14	7	17	16	10	11	5	6	11
Bosnia & Herzegovina (b)	134	59	75	45	15	16	21	12	15	10	8
Bulgaria	8	17	27	13	12	12	21	10	22	15	17
Croatia (b)	83	59	141	37	31	12	10	15	12	24	25
Cyprus	2	3	5	6	1	5	4	9	5	2	9
Fmr Yugo Rep of Macedonia (b)	15	13	46	11	8	11	4	9	6	7	8
Greece	10	6	4	7	6	8	6	7	6	7	7
Moldava	-	-	-	1	-	1	3	-	2	1	-
Montenegro	-	-	-	-	-	-	-	-	-	-	5
Romania	25	21	24	42	49	38	36	74	54	48	46
Serbia (b)	-	-	-	-	-	-	-	-	5	25	21
Fmr Serbia & Montenegro (b)	404	320	309	210	139	86	81	75	80	57	79
Slovenia (b)	3	1	3	-	-	-	-	10	20	25	14
Total	686	507	648	379	278	205	196	232	232	227	250
<i>Eastern Europe</i>											
Belarus (c)	4	2	3	-	3	2	2	3	-	1	3
Czech Republic (d)	1	4	3	5	1	2	2	11	18	4	16
Estonia (c)	1	-	1	1	1	1	3	2	5	7	4
Former Czechoslovakia (d)	15	18	24	21	14	18	21	18	16	13	16
Hungary	10	12	10	15	16	30	27	25	30	45	72
Latvia (c)	4	3	7	3	2	-	2	7	2	1	2
Lithuania (c)	-	4	1	-	2	1	2	2	3	8	1
Poland	19	33	40	32	30	35	40	72	31	54	60
Russian Federation (c)	9	6	20	18	6	24	30	38	32	74	129
Slovakia (d)	-	4	2	2	-	2	4	6	7	6	11
Ukraine	3	9	16	13	18	19	12	14	33	23	25
Total	66	95	127	110	93	134	145	198	177	236	339
Total Europe	3 159	3 153	3 395	2 927	3 630	5 204	5 272	6 360	6 941	7 384	6 991

(b) As reliable data are not available for component countries prior to 1995-96, care should be taken when interpreting the data. Serbia and Montenegro was previously called the Federal Republic of Yugoslavia and since 1998-99 contains the Former Yugoslavia nfd.

(c) As reliable data are not available for component countries prior to 1995-96, care should be taken when interpreting the data.

(d) As reliable data are not available for component countries prior to 1995-96, care should be taken when interpreting the data.

Queensland

Table 4.1 (continued) **Settler arrivals by birthplace, 1998-99 to 2008-09**

Birthplace	1998-99	1999-00	2000-01	2001-02	2002-03	2003-04	2004-05	2005-06	2006-07	2007-08	2008-09
North Africa & The Middle East											
<i>North Africa</i>											
Algeria	1	6	1	1	3	4	2	3	5	3	2
Egypt	15	34	33	19	55	57	69	50	45	56	72
Libya	-	1	1	-	1	2	-	3	2	-	3
Morocco	-	3	2	3	2	4	4	2	5	5	5
Sudan	49	60	121	140	440	606	708	590	330	130	110
Tunisia	2	-	3	1	1	-	-	3	1	1	-
North Africa nfd	-	-	-	1	-	-	-	-	-	-	-
Total	67	104	161	165	502	673	783	651	388	195	192
<i>The Middle East</i>											
Bahrain	1	-	2	2	7	-	-	3	4	4	14
Gaza Strip & West Bank	1	-	-	1	-	1	-	2	3	-	1
Iran	20	49	58	27	50	65	86	100	112	133	249
Iraq	44	44	70	74	170	45	43	64	82	108	192
Israel	12	3	10	18	25	22	28	19	46	16	16
Jordan	6	6	3	8	10	5	3	6	6	10	13
Kuwait	1	3	4	5	6	7	14	16	11	12	11
Lebanon	11	12	39	20	32	26	26	28	21	40	22
Oman	-	-	3	2	-	5	2	-	2	1	-
Qatar	-	-	-	1	1	1	-	1	-	4	1
Saudi Arabia	3	1	7	7	7	6	8	9	4	12	11
Syria	3	5	5	19	6	1	3	9	6	11	11
Turkey	15	26	9	31	30	38	29	24	24	37	28
United Arab Emirates	5	1	6	9	21	15	29	14	17	18	21
Yemen	-	1	-	2	4	18	1	-	6	3	-
Middle East nfd	-	-	1	2	3	1	3	1	1	-	1
Total	122	151	217	228	372	256	275	296	345	409	591
Total North Africa & the Middle East	189	255	378	393	874	929	1 058	947	733	604	783
Southeast Asia											
Brunei	3	7	6	1	1	6	2	3	3	7	8
Burma (Myanmar)	5	6	10	10	7	9	24	17	190	190	310
Cambodia	17	13	51	30	22	34	34	49	53	48	83
East Timor (e)	-	-	1	2	1	2	-	2	-	2	6
Indonesia (e)	133	137	193	235	199	216	143	176	157	180	165
Laos	-	1	19	4	2	4	36	15	17	8	17
Malaysia	136	188	207	208	226	375	303	313	278	500	418
Philippines	469	488	436	492	493	627	625	758	923	1 070	1 083
Singapore	76	69	148	147	249	283	370	293	159	211	189
Thailand	75	86	93	189	168	171	247	269	330	380	480
Vietnam	148	140	127	164	267	198	153	229	269	228	301
Total Southeast Asia	1 062	1 135	1 291	1 482	1 635	1 925	1 937	2 124	2 379	2 824	3 060

(e) East Timor previously recorded under Indonesia, care should be taken when interpreting the data.

Queensland

Table 4.1 (continued) **Settler arrivals by birthplace, 1998-99 to 2008-09**

Birthplace	1998-99	1999-00	2000-01	2001-02	2002-03	2003-04	2004-05	2005-06	2006-07	2007-08	2008-09
Northeast Asia											
China (f)	299	339	513	409	402	576	717	640	786	846	1 172
Hong Kong (g)	356	241	165	123	136	143	235	139	129	125	159
Japan	165	150	164	175	170	226	222	225	252	252	310
Korea	89	104	195	85	104	137	240	252	309	425	588
Macau (g)	6	9	3	1	1	2	4	2	1	-	1
Mongolia	-	-	-	-	-	1	4	1	4	3	3
Taiwan	711	721	1 065	695	517	378	350	292	303	314	248
Total Northeast Asia	1 626	1 564	2 105	1 488	1 330	1 463	1 772	1 551	1 784	1 965	2 481
Southern Asia											
Bangladesh	12	29	81	43	22	48	23	26	42	58	104
Bhutan	-	-	-	-	-	-	-	1	-	-	63
India	172	273	409	365	324	449	622	713	903	1 228	1 627
Maldives	-	-	-	1	-	-	-	4	-	1	2
Nepal	3	7	16	9	3	23	26	16	29	50	90
Pakistan	21	39	75	46	39	53	58	51	65	101	138
Sri Lanka	55	81	96	103	103	96	125	151	219	333	387
Total Southern Asia	263	429	677	567	491	669	854	962	1 258	1 771	2 411
Central Asia											
Afghanistan	15	27	11	48	50	52	123	157	105	98	114
Armenia (d)	-	-	-	-	-	-	-	1	-	-	-
Azerbaijan (d)	1	-	1	-	-	-	1	-	3	-	3
Georgia (d)	-	1	-	1	-	-	1	-	-	1	-
Kazakhstan (d)	-	-	3	-	3	4	3	9	6	17	16
Kyrgyzstan (d)	-	-	-	4	6	1	5	1	5	6	-
Tajikistan (d)	-	-	-	-	-	-	1	-	1	1	-
Turkmenistan (d)	-	-	-	-	-	-	2	-	-	1	1
Uzbekistan (d)	-	1	-	-	1	5	10	9	2	2	4
Total Central Asia	16	29	15	53	60	62	146	177	122	126	138
Northern America											
Bermuda	1	-	2	-	3	1	-	2	-	-	-
Canada	118	161	166	142	154	117	159	189	181	180	212
USA	199	189	236	240	251	304	302	348	402	321	293
Total Northern America	318	350	404	382	408	422	461	539	583	501	505

(d) As reliable data are not available for component countries prior to 1995-96, care should be taken when interpreting the data.

(f) Excluding SARs and Taiwan.

(g) SAR of China.

Queensland

Table 4.1 (continued) **Settler arrivals by birthplace, 1998-99 to 2008-09**

Birthplace	1998-99	1999-00	2000-01	2001-02	2002-03	2003-04	2004-05	2005-06	2006-07	2007-08	2008-09
South America, Central America & the Caribbean											
<i>South America</i>											
Argentina	9	10	7	17	29	27	30	24	13	13	8
Bolivia	1	2	4	1	4	2	-	2	-	4	-
Brazil	25	10	21	16	43	31	48	59	78	92	80
Chile	11	9	10	14	12	15	20	12	20	34	18
Colombia	17	10	13	18	27	38	29	25	39	61	53
Ecuador	-	1	-	1	1	1	4	4	3	3	7
Falkland Islands	-	-	-	-	-	-	1	1	1	1	-
Guyana	-	1	-	-	1	4	-	2	-	1	1
Paraguay	2	-	-	-	2	-	-	3	-	1	1
Peru	1	5	14	13	10	12	18	31	26	24	39
Suriname	-	-	-	-	1	-	-	-	2	-	-
Uruguay	-	1	-	4	8	5	3	2	1	3	1
Venezuela	2	7	8	4	4	19	19	22	12	30	25
Total	68	56	77	88	142	154	172	187	195	267	233
<i>Central America</i>											
Belize	-	-	-	-	-	1	-	-	-	-	-
Costa Rica	-	-	-	-	-	-	-	2	1	3	-
El Salvador	5	5	5	5	3	1	7	3	3	3	11
Guatemala	1	-	1	2	-	1	1	-	2	-	3
Honduras	-	-	-	3	-	-	-	-	1	1	4
Mexico	11	6	9	5	10	7	19	10	17	27	18
Nicaragua	-	-	-	-	-	-	-	2	3	3	-
Panama	3	-	2	1	-	1	1	1	-	2	1
Total	20	11	17	16	13	11	28	18	27	39	37
<i>The Caribbean</i>											
Antigua & Barbuda	-	-	-	-	-	-	-	1	1	-	-
Aruba	-	-	-	-	-	-	-	-	-	-	1
Bahamas	1	-	1	-	1	2	1	-	1	1	-
Barbados	2	1	6	-	1	2	-	3	2	1	3
Cayman Islands	1	-	-	1	-	1	1	1	2	2	1
Cuba	1	-	2	3	-	-	4	2	6	6	2
Dominica	-	-	-	-	-	-	2	-	-	1	-
Dominican Republic	-	-	3	1	2	1	4	1	-	1	1
Grenada	-	-	-	-	1	1	1	1	-	-	-
Haiti	-	-	-	-	-	1	-	-	-	-	1
Jamaica	3	3	2	1	2	5	7	3	3	4	9
Martinique	-	1	-	-	-	-	-	-	-	-	-
Monserrat	-	-	-	-	-	-	-	-	-	1	-
Netherlands Antilles	-	-	-	1	-	-	-	-	-	-	-
Puerto Rico	2	-	1	-	1	-	-	1	1	1	1
St Lucia	-	-	-	-	-	-	1	-	1	1	-
Trinidad & Tobago	1	4	3	3	1	6	3	2	5	3	3
Virgin Islands British	-	-	-	-	-	-	1	-	-	-	-
Caribbean nfd	-	-	-	-	-	-	1	-	1	-	-
Total	11	9	18	10	9	19	26	15	23	22	22
Total South America, Central America & The Caribbean	99	76	112	114	164	184	226	220	245	328	292

Queensland

Table 4.1 (continued) Settler arrivals by birthplace, 1998-99 to 2008-09

Birthplace	1998-99	1999-00	2000-01	2001-02	2002-03	2003-04	2004-05	2005-06	2006-07	2007-08	2008-09
Sub-Saharan Africa											
<i>Central & West Africa</i>											
Benin	-	-	-	-	-	-	1	1	3	2	-
Burkina Faso	-	-	-	-	-	-	-	-	-	2	-
Cameroon	-	-	-	-	1	-	-	2	-	7	5
Central African Republic	-	-	-	-	-	-	-	-	-	5	-
Chad	-	-	-	-	-	-	-	1	4	2	-
Congo	2	-	-	-	11	1	29	8	16	11	7
Congo Democratic Republic	-	-	1	4	1	-	3	17	84	80	58
Cote D'Ivoire	-	-	-	-	1	-	11	3	14	11	13
Gabon	-	-	1	1	-	-	-	-	-	-	-
Gambia	-	-	-	-	-	-	2	1	1	1	-
Ghana	2	5	13	6	3	8	2	15	7	25	23
Guinea	1	1	-	-	6	1	24	18	19	7	5
Liberia	1	-	-	6	12	21	110	76	44	33	29
Niger	-	-	-	-	-	-	-	4	1	-	-
Nigeria	4	11	16	13	9	19	6	23	24	35	24
Senegal	-	1	-	-	-	-	-	1	-	2	1
Sierra Leone	1	6	4	33	10	13	107	44	27	13	19
Togo	-	-	-	-	-	-	7	1	10	17	5
Total	11	24	35	63	54	63	302	215	254	253	189
<i>Southern & East Africa</i>											
Angola	-	-	1	1	2	1	1	-	2	-	4
Botswana	-	2	3	2	6	4	5	9	5	2	18
Burundi	-	-	3	-	-	15	55	101	122	59	36
Djibouti	-	-	2	1	1	-	-	-	-	1	-
Eritrea (h)	8	11	7	18	7	7	7	41	26	14	23
Ethiopia (h)	30	23	35	45	36	53	60	54	42	38	97
Kenya	14	13	25	51	66	78	114	82	94	46	86
Lesotho	-	-	-	1	1	-	-	1	1	-	-
Madagascar	1	2	2	2	-	1	-	1	1	2	-
Malawi	2	-	2	16	12	12	7	-	5	8	8
Mauritius	5	2	3	4	6	7	20	26	10	22	31

(h) As reliable data are not available for component countries prior to 1995-96, care should be taken when interpreting the data.

Queensland

Table 4.1 (continued) **Settler arrivals by birthplace, 1998-99 to 2008-09**

Birthplace	1998-99	1999-00	2000-01	2001-02	2002-03	2003-04	2004-05	2005-06	2006-07	2007-08	2008-09
<i>Southern & East Africa</i> (continued)											
Mozambique	7	1	5	6	4	8	6	3	8	6	10
Namibia	6	1	6	6	11	5	8	9	8	9	18
Reunion	-	5	-	-	-	1	-	-	-	-	-
Rwanda	1	-	-	2	-	22	5	24	28	16	21
St Helena	-	-	-	-	-	-	1	-	-	-	-
Seychelles	1	-	-	6	2	2	4	-	3	1	5
Somalia	52	3	14	7	12	11	18	53	22	27	47
South Africa	806	901	1 097	1 212	1 064	1 304	1 048	995	1 185	1 570	2 084
Swaziland	2	-	1	1	1	1	2	3	2	1	3
Tanzania	2	1	2	3	5	14	29	85	93	75	18
Uganda	-	3	3	7	10	21	23	43	58	16	15
Zambia	11	15	22	27	19	27	30	22	21	29	33
Zimbabwe	54	126	223	367	346	416	308	214	243	281	247
Southern & East Africa nfd	-	1	-	-	-	-	-	-	-	-	-
Total	1 002	1 110	1 456	1 785	1 611	2 010	1 751	1 766	1 979	2 223	2 804
Total											
Sub-Saharan Africa	1 013	1 134	1 491	1 848	1 665	2 073	2 053	1 981	2 233	2 476	2 993
Supplementary codes (i)											
Fmr USSR	63	80	102	94	100	109	108	118	119	97	103
Total	63	80	102	94	100	109	108	118	119	97	103
Not stated	4	13	6	-	7	15	1	21	15	42	16
Total all countries	16 028	17 286	19 535	15 825	16 182	20 284	22 660	24 862	28 640	32 496	33 029

(i) Supplementary codes cannot be classified to any major region in the Standard Australian Classification of Countries (SACC). This may lead to under reporting of their component countries in the rest of the table, care should be taken when interpreting the data.

South Australia

Table 5.1 Settler arrivals by birthplace, 1998-99 to 2008-09

Birthplace	1998-99	1999-00	2000-01	2001-02	2002-03	2003-04	2004-05	2005-06	2006-07	2007-08	2008-09
Oceania											
<i>Australia & External Territories (a)</i>	6	9	11	11	12	6	15	16	30	47	54
<i>New Zealand</i>	327	341	482	339	232	266	327	373	397	508	479
<i>Melanesia</i>											
Papua New Guinea	4	-	1	1	1	6	1	3	-	2	7
Solomon Islands	-	3	-	-	-	-	1	-	3	-	1
Vanuatu	-	-	-	-	4	-	-	-	1	-	-
<i>Total</i>	4	3	1	1	5	6	2	3	4	2	8
<i>Micronesia</i>											
Kiribati	-	-	-	-	-	-	-	-	-	1	1
<i>Total</i>	-	-	-	-	-	-	-	-	-	1	1
<i>Polynesia (excluding Hawaii)</i>											
Cook Islands	3	2	1	-	2	-	-	1	1	5	3
Fiji	16	20	16	29	22	26	28	28	32	46	51
Niue	2	1	-	-	-	-	-	-	1	3	1
Samoa	2	3	4	4	2	2	8	3	6	4	14
Samoa American	-	-	1	1	-	-	-	-	-	1	-
Tokelau	-	-	-	-	-	-	-	-	-	1	-
Tonga	1	4	2	5	1	-	2	3	3	7	4
Polynesia (excl Hawaii) nfd	1	-	-	-	-	-	-	-	-	-	-
<i>Total</i>	25	30	24	39	27	28	38	35	43	67	73
Total Oceania	362	383	518	390	276	306	382	427	474	625	615
Europe											
<i>United Kingdom & Ireland</i>											
UK	681	665	495	572	785	1 269	1 725	3 009	2 535	2 451	2 291
Ireland	26	19	12	16	18	36	44	64	70	56	55
<i>Total</i>	707	684	507	588	803	1 305	1 769	3 073	2 605	2 507	2 346
<i>Western Europe</i>											
Austria	-	7	4	4	7	2	7	8	7	2	3
Belgium	1	4	5	1	8	2	4	4	10	11	9
France	5	11	16	16	24	17	23	18	11	13	9
Germany	52	50	35	48	28	48	58	76	74	76	80
Luxembourg	-	-	1	-	-	-	-	-	-	-	-
Monaco	-	-	-	1	-	-	-	-	-	-	-
Netherlands	18	36	20	19	22	21	34	34	46	58	37
Switzerland	6	13	5	10	10	7	11	14	4	11	9
<i>Total</i>	82	121	86	99	99	97	137	154	152	171	147

(a) The Australia component consists of persons born in Australia who have settled overseas and returned.

South Australia

Table 5.1 (continued) **Settler arrivals by birthplace, 1998-99 to 2008-09**

Birthplace	1998-99	1999-00	2000-01	2001-02	2002-03	2003-04	2004-05	2005-06	2006-07	2007-08	2008-09
<i>Northern Europe</i>											
Denmark	2	2	11	11	4	-	9	5	11	3	2
Finland	-	1	-	1	3	2	-	3	4	1	1
Iceland	-	-	-	-	-	-	-	-	-	1	-
Norway	-	1	2	1	2	7	7	4	6	3	9
Sweden	4	5	7	5	10	10	6	16	8	19	14
Total	6	9	20	18	19	19	22	28	29	27	26
<i>Southern Europe</i>											
Gibraltar	1	-	-	-	-	-	-	-	-	2	-
Italy	13	10	9	10	3	8	26	11	12	8	24
Malta	-	1	1	2	1	2	-	5	1	1	-
Portugal	4	-	1	1	1	2	2	-	3	8	-
Spain	1	4	4	5	6	4	2	3	11	6	1
Total	19	15	15	18	11	16	30	19	27	25	25
<i>South Eastern Europe</i>											
Albania	10	4	5	14	20	9	12	7	12	19	19
Bosnia & Herzegovina (b)	160	65	81	38	14	16	5	7	7	4	10
Bulgaria	9	6	12	5	7	13	4	5	9	8	4
Croatia (b)	102	85	117	58	16	5	8	2	4	2	3
Cyprus	3	-	4	2	1	4	6	1	3	4	5
Fmr Yugo Rep of Macedonia (b)	12	4	6	5	3	-	-	2	5	1	4
Greece	3	8	1	10	6	4	7	10	3	8	3
Moldava	-	-	-	-	-	15	1	5	2	12	3
Montenegro (b)	-	-	-	-	-	-	-	-	1	2	-
Romania	48	22	20	25	19	27	20	14	39	18	20
Serbia (b)	-	-	-	-	-	-	-	-	2	11	10
Fmr Serbia & Montenegro (b)	246	189	163	198	161	62	34	40	47	25	12
Slovenia (b)	-	1	-	2	-	-	-	-	1	-	1
Total	593	384	409	357	247	155	97	93	135	114	94
<i>Eastern Europe</i>											
Belarus (c)	-	1	-	-	-	-	2	2	6	1	3
Czech Republic (d)	-	3	-	2	-	-	-	5	3	-	3
Estonia	-	2	-	-	5	2	-	1	2	-	-
Former Czechoslovakia (d)	7	5	4	6	9	13	9	7	3	3	8
Hungary	3	6	5	5	2	7	10	4	12	3	2
Latvia (c)	-	5	2	4	2	4	2	3	5	1	3
Lithuania (c)	-	1	-	2	2	-	6	1	3	6	2
Poland	28	24	8	31	33	27	45	32	42	34	38
Russian Federation (c)	5	5	1	6	4	24	24	40	32	47	63
Slovakia (d)	2	-	-	2	1	2	1	1	2	1	1
Ukraine	8	9	8	9	9	17	14	18	13	18	16
Total	53	61	28	67	67	96	113	114	123	114	139
Total Europe	1 460	1 274	1 065	1 147	1 246	1 688	2 168	3 481	3 071	2 958	2 777

(b) As reliable data are not available for component countries prior to 1995-96, care should be taken when interpreting the data. Serbia and Montenegro was previously called the Federal Republic of Yugoslavia and since 1998-99 contains the Former Yugoslavia nfd.

(c) As reliable data are not available for component countries prior to 1995-96, care should be taken when interpreting the data.

(d) As reliable data are not available for component countries prior to 1995-96, care should be taken when interpreting the data.

South Australia

Table 5.1 (continued) **Settler arrivals by birthplace, 1998-99 to 2008-09**

Birthplace	1998-99	1999-00	2000-01	2001-02	2002-03	2003-04	2004-05	2005-06	2006-07	2007-08	2008-09
North Africa & The Middle East											
<i>North Africa</i>											
Algeria	-	-	11	2	5	-	1	-	1	1	-
Egypt	8	8	6	7	29	19	24	37	39	22	34
Libya	-	-	-	-	-	3	-	-	1	-	1
Morocco	2	-	-	-	2	3	3	1	5	2	-
Sudan	20	52	74	89	188	363	407	248	143	79	87
Tunisia	-	1	-	-	2	-	-	-	-	1	-
Total	30	61	91	98	226	388	435	286	189	105	122
<i>The Middle East</i>											
Bahrain	-	-	-	-	1	-	2	2	-	-	1
Gaza Strip & West Bank	-	-	-	1	-	-	-	-	-	-	-
Iran	47	54	119	53	71	70	69	70	143	119	184
Iraq	79	47	44	51	115	63	46	64	54	46	91
Israel	5	1	-	3	7	3	13	7	5	5	9
Jordan	1	1	9	1	5	4	9	8	4	1	18
Kuwait	1	-	2	-	3	-	2	2	6	10	12
Lebanon	10	21	22	20	29	31	24	41	38	31	28
Oman	-	-	-	1	1	-	-	4	-	-	2
Qatar	-	1	-	-	-	-	-	-	4	1	2
Saudi Arabia	-	4	1	1	1	-	2	4	5	5	2
Syria	3	6	6	11	10	8	6	7	9	9	15
Turkey	7	16	4	19	12	16	20	14	9	10	9
United Arab Emirates	-	1	-	9	7	3	11	8	12	9	7
Yemen	1	-	4	-	3	2	-	-	2	-	1
Middle East nfd	-	-	-	-	1	-	-	2	-	8	-
Total	154	152	211	170	266	200	204	233	291	254	381
Total North Africa & the Middle East	184	213	302	268	492	588	639	519	480	359	503
Southeast Asia											
Brunei	1	-	1	1	1	4	-	3	1	2	1
Burma (Myanmar)	1	1	1	1	12	3	5	11	75	119	119
Cambodia	29	27	25	28	49	31	61	52	63	59	65
East Timor	-	-	-	-	-	-	-	-	2	-	1
Indonesia	35	36	37	65	53	47	29	64	59	56	57
Laos	2	-	-	1	-	-	4	6	6	2	5
Malaysia	62	60	80	58	91	132	112	154	183	191	139
Philippines	147	121	123	126	134	147	161	285	343	372	362
Singapore	12	34	26	61	68	63	94	129	116	88	81
Thailand	29	20	35	49	50	57	50	62	93	83	108
Vietnam	101	89	71	102	130	110	97	155	193	145	179
Total Southeast Asia	419	388	399	492	588	594	613	921	1 134	1 117	1 117

South Australia

Table 5.1 (continued) **Settler arrivals by birthplace, 1998-99 to 2008-09**

Birthplace	1998-99	1999-00	2000-01	2001-02	2002-03	2003-04	2004-05	2005-06	2006-07	2007-08	2008-09
Northeast Asia											
China (f)	107	96	123	134	113	208	513	879	1 078	1 060	905
Hong Kong (g)	32	17	28	10	18	31	48	44	50	42	36
Japan	13	15	31	11	29	32	40	40	64	50	37
Korea	18	25	40	25	34	35	103	163	264	229	194
Macau (g)	-	1	-	-	2	1	-	2	-	1	-
Mongolia	-	-	-	-	-	-	-	-	2	-	4
Taiwan	12	23	22	18	16	18	31	30	46	37	35
Total Northeast Asia	182	177	244	198	212	325	735	1 158	1 504	1 419	1 211
Southern Asia											
Bangladesh	6	-	18	3	1	10	17	16	77	90	122
Bhutan	-	-	-	-	-	-	-	-	-	8	185
India	87	152	126	118	138	243	404	909	1 416	1 657	1 578
Maldives	-	-	-	3	-	-	1	-	1	6	1
Nepal	1	1	2	5	4	5	5	10	10	37	74
Pakistan	62	29	36	22	12	53	46	55	69	78	68
Sri Lanka	16	17	44	35	23	28	45	85	72	153	145
Total Southern Asia	172	199	226	186	178	339	518	1 075	1 645	2 029	2 173
Central Asia											
Afghanistan	24	2	3	36	57	98	100	373	455	322	186
Armenia (d)	-	-	-	-	5	4	-	-	-	1	1
Azerbaijan (d)	-	-	-	-	-	3	-	-	-	-	1
Georgia (d)	-	1	1	-	-	-	-	-	1	-	-
Kazakhstan (d)	6	3	1	4	1	2	11	-	7	4	6
Kyrgyzstan (d)	-	-	-	-	-	3	-	4	3	-	7
Tajikistan (d)	-	-	-	-	-	-	-	1	-	-	-
Turkmenistan (d)	-	-	-	-	-	-	-	-	-	1	-
Uzbekistan (d)	-	-	8	3	-	3	6	41	8	15	10
Total Central Asia	30	6	13	43	63	113	117	419	474	343	211
Northern America											
Bermuda	-	-	-	-	-	-	1	-	-	-	-
Canada	42	30	42	22	46	38	24	18	46	44	64
USA	40	52	57	50	78	97	68	95	89	85	80
Total Northern America	82	82	99	72	124	135	93	113	135	129	144

(d) As reliable data are not available for component countries prior to 1995-96, care should be taken when interpreting the data.

(f) Excluding SARs and Taiwan.

(g) SAR of China.

South Australia

Table 5.1 (continued) **Settler arrivals by birthplace, 1998-99 to 2008-09**

Birthplace	1998-99	1999-00	2000-01	2001-02	2002-03	2003-04	2004-05	2005-06	2006-07	2007-08	2008-09
South America, Central America & the Caribbean											
<i>South America</i>											
Argentina	3	2	4	8	8	14	33	15	8	8	20
Bolivia	-	-	1	-	-	-	1	2	-	4	6
Brazil	2	-	3	4	9	9	12	27	37	57	13
Chile	6	3	1	12	2	3	7	6	7	2	11
Colombia	1	1	4	1	4	7	1	11	14	23	21
Ecuador	-	2	-	2	2	-	4	1	-	4	1
Guyana	-	-	1	-	1	1	-	1	1	1	1
Paraguay	-	-	-	-	-	1	-	-	-	-	-
Peru	1	2	2	2	5	8	9	20	35	18	10
Suriname	-	-	-	-	1	-	-	1	-	-	-
Uruguay	-	-	-	-	1	-	1	-	1	1	1
Venezuela	5	1	2	-	1	2	9	13	34	56	17
Total	18	11	18	29	34	45	77	97	137	174	101
<i>Central America</i>											
Costa Rica	-	-	-	-	-	-	-	3	-	-	-
El Salvador	5	1	1	1	-	1	-	2	1	5	6
Guatemala	-	-	-	-	-	-	-	-	5	-	-
Honduras	2	-	-	-	-	-	-	1	-	-	-
Mexico	1	2	1	-	2	3	3	19	22	79	34
Nicaragua	-	-	-	-	-	-	-	-	-	1	-
Panama	-	4	-	-	-	-	-	1	-	-	2
Total	8	7	2	1	2	4	3	26	28	85	42
<i>The Caribbean</i>											
Bahamas	-	-	-	-	-	-	1	-	-	-	-
Barbados	-	-	-	-	-	-	-	-	1	-	-
Cayman Islands	-	-	1	-	-	-	-	-	-	-	-
Cuba	-	-	-	1	3	1	-	-	2	-	-
Dominican Republic	1	-	1	-	-	-	-	-	-	-	1
Jamaica	1	2	2	-	1	-	1	1	2	2	-
Montserrat	-	-	-	-	-	-	-	1	-	-	-
Netherlands Antilles	-	-	-	-	1	-	-	-	-	-	-
St Kitts & Nevis	-	-	-	-	1	-	-	-	-	-	-
St Lucia	1	-	-	-	-	-	-	1	-	-	-
Trinidad & Tobago	-	-	1	-	-	-	-	3	1	1	1
Total	3	2	5	1	6	1	2	6	6	3	2
Total South America, Central America & The Caribbean	29	20	25	31	42	50	82	129	171	262	145

South Australia

Table 5.1 (continued) **Settler arrivals by birthplace, 1998-99 to 2008-09**

Birthplace	1998-99	1999-00	2000-01	2001-02	2002-03	2003-04	2004-05	2005-06	2006-07	2007-08	2008-09
Sub-Saharan Africa											
<i>Central & West Africa</i>											
Burkina Faso	-	-	-	-	-	-	-	-	-	-	1
Cameroon	-	-	-	-	-	1	1	-	2	2	-
Central African Republic	-	-	-	-	-	-	1	-	-	-	-
Congo	-	-	1	1	1	11	86	6	12	1	3
Congo Democratic Republic	-	-	-	-	-	1	-	15	124	61	28
Cote D'Ivoire	-	1	1	-	-	-	13	11	18	6	8
Gambia	2	-	-	-	-	-	-	-	-	-	-
Ghana	4	-	1	2	1	1	19	18	16	3	11
Guinea	-	-	-	-	2	1	20	9	22	16	9
Liberia	-	-	1	13	45	20	144	75	102	18	41
Mali	-	1	-	-	-	-	-	-	-	-	-
Niger	1	1	-	-	-	1	-	-	-	-	-
Nigeria	1	1	1	11	3	5	5	15	10	5	13
Senegal	-	-	-	-	1	-	-	1	3	-	-
Sierra Leone	-	-	9	22	-	3	74	19	26	14	36
Togo	-	-	-	-	-	-	-	-	6	10	9
Total	8	4	14	49	53	44	363	169	341	136	159
<i>Southern & East Africa</i>											
Angola	-	-	-	-	-	-	-	-	-	1	-
Botswana	-	1	-	2	2	2	-	1	2	2	1
Burundi	-	-	-	-	-	8	46	82	21	30	35
Eritrea (h)	15	10	16	3	10	9	6	4	9	13	11
Ethiopia (h)	20	23	23	31	22	58	57	24	30	23	36
Kenya	22	24	9	31	21	57	89	79	57	23	39
Lesotho	-	-	-	-	-	-	-	-	-	-	1
Madagascar	-	-	1	-	-	-	-	1	-	-	1
Malawi	1	-	-	1	-	-	6	-	7	6	2
Mauritius	-	5	-	3	6	6	6	6	4	2	10
Mozambique	-	-	1	-	1	-	-	-	-	-	-
Namibia	2	-	1	-	7	-	5	5	1	-	1
Rwanda	-	-	-	-	-	1	7	3	8	4	10
Seychelles	2	-	-	-	-	-	-	1	-	-	2
Somalia	29	7	6	18	1	19	54	17	15	12	21
South Africa	213	189	153	241	209	317	253	263	290	245	329
Swaziland	-	1	-	-	-	2	-	-	-	-	1
Tanzania	3	1	-	-	-	5	25	64	17	22	9
Uganda	-	-	-	9	12	7	12	14	34	28	19
Zambia	4	2	2	1	2	8	5	10	21	5	7
Zimbabwe	9	22	8	29	24	39	37	53	55	38	42
Southern & East Africa nfd	-	-	-	-	-	-	-	-	-	1	-
Total	320	285	220	369	317	538	608	627	571	455	577
Total											
Sub-Saharan Africa	328	289	234	418	370	582	971	796	912	591	736
Supplementary codes (i)											
Fmr USSR	72	73	58	71	65	53	44	61	58	45	62
Total	72	73	58	71	65	53	44	61	58	45	62
Not stated	-	1	-	-	1	-	2	-	3	19	1
Total all countries	3 320	3 105	3 183	3 316	3 657	4 773	6 364	9 099	10 061	9 896	9 695

(h) As reliable data are not available for component countries prior to 1995-96, care should be taken when interpreting the data.

(i) Supplementary codes cannot be classified to any major region in the Standard Australian Classification of Countries (SACC). This may lead to under reporting of their component countries in the rest of the table, care should be taken when interpreting the data.

Western Australia

Table 6.1 Settler arrivals by birthplace, 1998-99 to 2008-09

Birthplace	1998-99	1999-00	2000-01	2001-02	2002-03	2003-04	2004-05	2005-06	2006-07	2007-08	2008-09
Oceania											
<i>Australia & External Territories (a)</i>	36	38	43	37	38	54	72	57	71	110	128
<i>New Zealand</i>	1 945	1 775	1 669	1 127	833	1 046	1 588	1 873	2 516	3 710	3 794
<i>Melanesia</i>											
New Caledonia	-	-	-	-	1	-	-	-	-	1	1
Papua New Guinea	2	-	-	1	2	1	1	3	5	5	20
Solomon Islands	1	-	2	-	-	-	1	2	1	2	2
Vanuatu	-	1	-	-	1	-	1	-	-	3	2
Total	3	1	2	1	4	1	3	5	6	11	25
<i>Micronesia</i>											
Guam	-	1	-	-	-	-	-	-	-	-	-
Kiribati	-	-	-	2	1	-	-	-	1	-	2
Nauru	-	-	3	-	-	-	1	-	-	-	-
Total	-	1	3	2	1	-	1	-	1	-	2
<i>Polynesia (excluding Hawaii)</i>											
Cook Islands	3	1	-	1	-	3	-	1	3	33	59
Fiji	3	3	11	10	6	6	11	17	11	45	69
French Polynesia	1	1	-	-	1	-	-	2	-	-	1
Niue	4	1	1	-	-	2	-	2	1	6	5
Samoa	14	9	13	1	4	8	12	4	7	51	91
Samoa American	-	1	-	-	-	-	-	1	-	2	-
Tokelau	1	1	-	-	-	-	-	1	-	1	1
Tonga	1	4	2	1	5	3	2	3	3	10	10
Tuvalu	-	-	-	2	-	-	-	-	-	-	2
Total	27	21	27	15	16	22	25	31	25	148	238
Total Oceania	2 011	1 836	1 744	1 182	892	1 123	1 689	1 966	2 619	3 979	4 187
Europe											
<i>United Kingdom & Ireland</i>											
UK	2 218	2 262	2 147	2 112	3 319	5 120	5 106	6 717	7 286	7 125	6 212
Ireland	120	130	138	92	106	174	159	218	297	325	408
Total	2 338	2 392	2 285	2 204	3 425	5 294	5 265	6 935	7 583	7 450	6 620
<i>Western Europe</i>											
Austria	19	26	9	11	11	17	17	10	22	13	10
Belgium	7	9	7	6	25	8	21	10	12	16	13
France	23	14	18	29	34	34	40	45	38	39	42
Germany	87	117	110	62	101	114	120	127	122	176	134
Liechtenstein	-	-	-	2	-	-	-	-	-	-	-
Luxembourg	1	-	-	-	-	-	-	1	3	1	-
Monaco	-	-	-	-	-	-	-	1	-	-	-
Netherlands	68	57	63	80	39	73	93	73	108	113	80
Switzerland	38	40	32	31	47	34	39	47	33	58	40
Total	243	263	239	221	257	280	330	314	338	416	319

(a) The Australia component consists of persons born in Australia who have settled overseas and returned.

Western Australia

Table 6.1 (continued) **Settler arrivals by birthplace, 1998-99 to 2008-09**

Birthplace	1998-99	1999-00	2000-01	2001-02	2002-03	2003-04	2004-05	2005-06	2006-07	2007-08	2008-09
<i>Northern Europe</i>											
Denmark	9	8	11	18	11	14	7	15	16	16	11
Faroe Islands	-	-	-	-	1	-	-	-	1	-	-
Finland	1	2	4	5	4	3	5	3	3	8	3
Greenland	-	-	-	-	-	-	-	1	-	-	-
Iceland	-	-	-	-	-	-	1	-	-	1	1
Norway	4	4	4	1	10	11	3	7	4	5	3
Sweden	13	17	8	13	15	34	22	13	15	21	22
Total	27	31	27	37	41	62	38	39	39	51	40
<i>Southern Europe</i>											
Gibraltar	4	1	1	-	-	-	1	1	1	1	1
Italy	29	23	33	48	20	35	36	34	38	31	40
Malta	1	-	4	-	4	8	7	3	8	12	6
Portugal	4	13	4	10	9	14	16	9	12	16	18
Spain	6	6	7	5	8	10	21	14	20	8	13
Total	44	43	49	63	41	67	81	61	79	68	78
<i>South Eastern Europe</i>											
Albania	2	-	7	3	2	7	6	17	8	3	4
Bosnia & Herzegovina (b)	191	98	91	39	11	13	11	11	14	17	10
Bulgaria	11	7	15	19	8	12	7	8	6	15	15
Croatia (b)	208	166	191	76	62	27	10	5	12	15	19
Cyprus	3	3	1	1	3	4	6	8	7	7	3
Fmr Yugo Rep of Macedonia (b)	41	35	69	41	39	34	27	34	26	64	45
Greece	6	7	3	6	6	4	7	3	1	4	11
Moldava	-	-	-	-	2	-	-	-	-	1	1
Montenegro (b)	-	-	-	-	-	-	-	-	-	1	-
Romania	28	48	29	19	32	40	32	22	41	47	26
Serbia (b)	-	-	-	-	-	-	-	-	2	24	25
Fmr Serbia & Montenegro (b)	338	289	233	197	204	91	59	67	70	40	31
Slovenia (b)	2	1	2	1	1	1	1	1	3	8	4
Total	830	654	641	402	370	233	166	176	190	246	194
<i>Eastern Europe</i>											
Belarus (c)	-	3	1	-	-	2	1	-	5	4	2
Czech Republic (d)	5	1	-	2	1	-	5	5	1	8	13
Estonia (c)	-	1	1	-	-	-	3	1	2	3	-
Former Czechoslovakia (d)	14	8	15	7	7	9	15	14	10	13	8
Hungary	3	5	5	5	6	9	6	10	12	11	9
Latvia (c)	-	-	-	-	2	1	3	1	-	1	2
Lithuania (c)	-	2	-	-	1	1	3	4	3	5	8
Poland	42	34	27	27	32	35	36	33	39	37	36
Russian Federation (c)	-	10	8	-	7	16	17	34	22	32	62
Slovakia (d)	1	2	-	-	1	2	-	3	4	4	3
Ukraine	7	2	9	6	9	3	13	15	6	9	16
Total	72	68	66	47	66	78	102	120	104	127	159
Total Europe	3 554	3 451	3 307	2 974	4 200	6 014	5 982	7 645	8 333	8 358	7 410

(b) As reliable data are not available for component countries prior to 1995-96, care should be taken when interpreting the data. Serbia and Montenegro was previously called the Federal Republic of Yugoslavia and since 1998-99 contains the Former Yugoslavia nfd.

(c) As reliable data are not available for component countries prior to 1995-96, care should be taken when interpreting the data.

(d) As reliable data are not available for component countries prior to 1995-96, care should be taken when interpreting the data.

Western Australia

Table 6.1 (continued) **Settler arrivals by birthplace, 1998-99 to 2008-09**

Birthplace	1998-99	1999-00	2000-01	2001-02	2002-03	2003-04	2004-05	2005-06	2006-07	2007-08	2008-09
North Africa & The Middle East											
<i>North Africa</i>											
Algeria	3	2	7	5	2	2	-	2	-	4	3
Egypt	10	20	29	18	30	44	69	50	64	28	42
Libya	3	-	2	-	3	-	2	2	3	3	2
Morocco	-	6	3	-	3	5	3	2	4	5	3
Sudan	31	52	195	144	239	500	789	441	380	203	162
Tunisia	2	-	-	-	2	1	-	3	-	1	-
Total	49	80	236	167	279	552	863	500	451	244	212
<i>The Middle East</i>											
Bahrain	2	-	1	8	-	1	5	3	2	2	5
Gaza Strip & West Bank	-	-	-	-	-	-	1	-	-	-	1
Iran	46	70	108	31	103	124	120	91	88	129	298
Iraq	38	97	94	90	255	97	59	89	76	180	304
Israel	16	9	14	10	17	20	24	24	33	19	24
Jordan	15	18	16	3	10	7	6	11	20	10	7
Kuwait	2	30	10	4	43	14	14	18	2	16	15
Lebanon	12	18	10	18	27	24	30	20	15	18	33
Oman	3	3	1	7	3	1	1	5	4	3	2
Qatar	3	4	1	7	1	3	1	-	6	5	4
Saudi Arabia	2	5	8	1	3	5	7	9	11	13	15
Syria	4	4	10	1	10	13	6	4	8	9	16
Turkey	16	12	18	49	44	27	28	21	22	26	21
United Arab Emirates	12	11	6	12	18	25	17	30	33	41	42
Yemen	2	-	1	1	-	-	-	-	1	1	5
Middle East nfd	-	1	2	3	-	-	2	3	2	1	1
Total	173	282	300	245	534	361	321	328	323	473	793
Total North Africa & the Middle East	222	362	536	412	813	913	1 184	828	774	717	1 005
Southeast Asia											
Brunei	15	18	28	27	26	28	27	19	24	21	16
Burma (Myanmar)	22	47	44	55	40	43	75	167	266	360	456
Cambodia	4	8	10	12	19	23	21	27	32	31	60
East Timor (e)	-	-	-	1	2	1	6	7	2	1	-
Indonesia (e)	828	890	1 095	1 132	705	534	384	300	307	375	346
Laos	2	1	1	-	2	-	8	6	6	11	5
Malaysia	316	487	473	473	825	903	756	751	702	896	1 014
Philippines	196	147	127	164	156	228	246	240	345	488	450
Singapore	242	355	419	553	605	697	1 076	936	582	593	533
Thailand	63	73	82	175	167	154	185	211	322	368	494
Vietnam	112	113	105	136	174	166	147	173	228	179	204
Total Southeast Asia	1 800	2 139	2 384	2 728	2 721	2 777	2 931	2 837	2 816	3 323	3 578

(e) East Timor previously recorded under Indonesia, care should be taken when interpreting the data.

Western Australia

Table 6.1 (continued) **Settler arrivals by birthplace, 1998-99 to 2008-09**

Birthplace	1998-99	1999-00	2000-01	2001-02	2002-03	2003-04	2004-05	2005-06	2006-07	2007-08	2008-09
Northeast Asia											
China (f)	201	217	239	231	224	319	362	423	477	612	759
Hong Kong (g)	63	96	74	62	69	78	90	66	77	79	62
Japan	55	42	56	52	65	80	83	70	92	95	87
Korea	12	36	57	42	30	45	58	70	80	106	142
Macau (g)	5	1	3	2	4	3	2	1	2	1	-
Mongolia	-	-	1	-	-	1	-	4	4	10	6
Taiwan	29	32	52	48	35	26	25	29	14	44	44
Total Northeast Asia	365	424	482	437	427	552	620	663	746	947	1 100
Southern Asia											
Bangladesh	13	15	22	13	13	14	20	33	48	66	102
Bhutan	4	-	-	-	-	-	-	1	-	-	16
India	208	309	328	298	390	401	567	558	853	1 361	1 892
Maldives	4	-	-	-	-	6	4	3	-	9	7
Nepal	-	6	8	6	3	10	7	9	20	18	34
Pakistan	24	62	45	28	58	65	61	51	62	79	132
Sri Lanka	37	68	97	83	94	97	149	129	212	289	423
Total Southern Asia	290	460	500	428	558	593	808	784	1 195	1 822	2 606
Central Asia											
Afghanistan	70	51	34	62	136	140	130	205	226	189	258
Armenia (d)	-	-	-	-	8	-	-	-	-	-	-
Azerbaijan (d)	-	-	-	-	-	-	4	7	1	-	3
Georgia (d)	-	1	-	-	-	-	-	-	-	1	1
Kazakhstan (d)	-	3	7	2	2	7	4	1	4	5	5
Kyrgyzstan (d)	-	-	1	-	1	8	12	1	5	2	3
Tajikistan (d)	-	-	-	-	-	-	1	-	-	-	-
Turkmenistan (d)	-	-	1	-	-	-	-	-	3	-	-
Uzbekistan (d)	-	-	-	2	-	1	2	-	6	1	8
Total Central Asia	70	55	43	66	147	156	153	214	245	198	278
Northern America											
Bermuda	-	4	-	-	-	-	-	-	-	-	-
Canada	67	84	97	97	73	74	101	109	91	120	98
USA	98	119	97	115	125	136	160	147	174	132	127
Total Northern America	165	207	194	212	198	210	261	256	265	252	225

(d) As reliable data are not available for component countries prior to 1995-96, care should be taken when interpreting the data.

(f) Excluding SARs and Taiwan.

(g) SAR of China.

Western Australia

Table 6.1 (continued) **Settler arrivals by birthplace, 1998-99 to 2008-09**

Birthplace	1998-99	1999-00	2000-01	2001-02	2002-03	2003-04	2004-05	2005-06	2006-07	2007-08	2008-09
South America, Central America & the Caribbean											
<i>South America</i>											
Argentina	2	7	4	2	12	14	8	7	12	14	7
Bolivia	-	-	-	-	2	-	3	2	1	2	2
Brazil	5	15	7	17	9	12	27	24	31	48	56
Chile	6	16	5	6	11	11	7	6	20	11	21
Colombia	4	3	1	6	13	6	11	11	15	12	25
Ecuador	-	-	-	-	-	1	-	1	3	3	1
Guyana	2	3	6	-	3	-	-	5	2	1	-
Paraguay	2	1	-	-	-	1	1	-	-	-	2
Peru	2	1	4	3	3	6	9	13	23	20	30
Suriname	-	-	-	-	-	-	-	-	1	-	1
Uruguay	-	-	-	-	1	6	1	1	2	3	1
Venezuela	1	4	1	2	4	7	1	13	8	21	28
South America nfd	-	-	-	-	-	-	-	-	-	-	1
Total	24	50	28	36	58	64	68	83	118	135	175
<i>Central America</i>											
Costa Rica	-	-	-	1	2	-	-	-	-	-	-
El Salvador	-	2	7	3	4	-	1	3	3	15	4
Guatemala	-	-	-	-	-	-	-	-	-	-	1
Honduras	-	-	-	-	-	-	-	-	-	3	-
Mexico	-	6	2	2	3	2	6	3	7	9	8
Nicaragua	-	-	-	-	-	-	-	-	3	-	-
Panama	-	-	-	-	-	1	-	-	-	-	1
Total	-	8	9	6	9	3	7	6	13	27	14
<i>The Caribbean</i>											
Bahamas	-	-	1	-	1	-	-	-	1	2	-
Barbados	-	-	-	-	2	-	1	-	2	2	1
Cayman Islands	-	-	-	1	-	-	1	-	2	-	-
Cuba	2	1	1	2	1	-	1	4	-	2	7
Dominican Republic	-	-	-	-	-	1	-	1	1	1	-
Grenada	-	1	-	-	-	-	-	1	-	-	-
Haiti	1	-	-	-	-	-	-	-	-	1	-
Jamaica	-	1	3	1	-	4	6	3	3	2	5
Netherlands Antilles	-	-	1	-	-	-	1	1	-	-	-
Puerto Rico	-	1	-	-	-	-	-	-	-	-	-
St Kitts & Nevis	-	-	-	-	-	-	-	-	-	1	-
Trinidad & Tobago	8	-	6	1	3	3	4	-	12	3	2
Total	11	4	12	5	7	8	14	10	21	14	15
Total South America, Central America & The Caribbean	35	62	49	47	74	75	89	99	152	176	204

Western Australia

Table 6.1 (continued) **Settler arrivals by birthplace, 1998-99 to 2008-09**

Birthplace	1998-99	1999-00	2000-01	2001-02	2002-03	2003-04	2004-05	2005-06	2006-07	2007-08	2008-09
Sub-Saharan Africa											
<i>Central & West Africa</i>											
Benin	-	-	-	-	-	-	-	-	-	4	-
Burkina Faso	-	-	-	-	-	1	-	-	1	-	-
Cameroon	-	-	-	1	1	-	-	-	3	4	-
Cape Verde	-	-	-	-	-	-	-	1	-	1	-
Central African Republic	-	-	-	-	-	-	-	-	1	6	-
Congo	1	3	11	3	5	68	85	17	19	8	17
Congo Democratic Republic	2	-	-	-	6	19	11	42	113	103	49
Cote D'Ivoire	-	-	-	-	-	-	27	6	12	14	12
Gabon	-	-	-	-	-	-	-	1	-	-	-
Ghana	7	2	4	6	8	11	8	24	30	26	16
Guinea	-	-	1	3	4	1	24	14	37	11	11
Liberia	-	-	12	48	25	28	137	98	124	72	62
Mauritania	-	-	-	-	-	-	-	1	-	28	-
Niger	-	-	-	-	1	-	-	-	-	1	-
Nigeria	3	4	4	20	14	17	15	16	30	32	53
Senegal	-	-	1	2	2	-	-	2	-	44	1
Sierra Leone	1	-	48	84	35	25	109	55	79	42	24
Togo	-	-	-	-	-	-	-	-	10	16	15
Total	14	9	81	167	101	170	416	277	459	412	260
<i>Southern & East Africa</i>											
Angola	-	-	-	-	-	-	-	1	1	1	5
Botswana	8	-	3	4	6	13	7	4	4	3	5
Burundi	-	-	2	4	3	4	26	60	69	52	70
Djibouti	-	-	2	1	-	-	1	-	-	-	-
Eritrea (h)	31	24	39	20	15	24	15	33	31	23	27
Ethiopia (h)	53	48	74	49	63	110	82	36	85	58	118
Kenya	153	106	91	157	186	172	179	138	201	170	235
Lesotho	-	-	-	1	-	-	-	-	1	-	2
Madagascar	-	1	1	1	1	-	1	1	2	1	1
Malawi	6	3	4	4	1	12	10	4	10	13	10
Mauritius	18	17	21	35	46	42	50	68	60	88	133
Mozambique	1	2	5	4	6	7	2	1	4	3	7
Namibia	10	13	16	10	13	10	8	13	14	7	14
Reunion	1	-	-	1	-	-	1	2	-	1	2
Rwanda	-	1	-	-	1	8	14	22	20	20	14
Seychelles	8	9	-	10	3	14	7	19	14	12	10
Somalia	55	72	37	32	23	31	25	26	63	48	96
South Africa	1 581	1 840	1 584	1 471	1 144	1 550	1 178	1 086	1 101	1 483	2 244
Swaziland	4	4	1	1	2	5	1	3	-	1	3
Tanzania	8	5	3	8	5	16	25	88	69	58	71
Uganda	2	2	5	7	11	14	37	20	57	44	29
Zambia	19	32	17	39	25	38	29	31	51	34	40
Zimbabwe	121	261	274	367	526	688	432	354	264	334	399
Southern & East Africa nfd	-	-	-	-	-	-	-	-	-	-	1
Total	2 079	2 440	2 179	2 226	2 080	2 758	2 130	2 010	2 121	2 454	3 536
Total											
Sub-Saharan Africa	2 093	2 449	2 260	2 393	2 181	2 928	2 546	2 287	2 580	2 866	3 796
Supplementary codes (i)											
Fmr USSR	56	53	61	71	62	62	55	56	34	60	66
Total	56	53	61	71	62	62	55	56	34	60	66
Not stated	11	14	5	4	6	8	-	3	24	40	8
Total all countries	10 672	11 512	11 565	10 954	12 279	15 411	16 318	17 638	19 783	22 738	24 463

(h) As reliable data are not available for component countries prior to 1995-96, care should be taken when interpreting the data.

(i) Supplementary codes cannot be classified to any major region in the Standard Australian Classification of Countries (SACC). This may lead to under reporting of their component countries in the rest of the table, care should be taken when interpreting the data.

Tasmania

Table 7.1 Settler arrivals by birthplace, 1998-99 to 2008-09

Birthplace	1998-99	1999-00	2000-01	2001-02	2002-03	2003-04	2004-05	2005-06	2006-07	2007-08	2008-09
Oceania											
<i>Australia & External Territories (a)</i>	1	2	3	3	2	2	2	-	6	5	4
<i>New Zealand</i>	96	117	106	73	93	83	84	79	90	131	135
<i>Melanesia</i>											
Papua New Guinea	2	-	-	1	-	-	1	1	-	-	1
Vanuatu	-	-	-	-	-	-	-	-	1	-	-
<i>Total</i>	2	-	-	1	-	-	1	1	1	-	1
<i>Micronesia</i>											
Kiribati	-	-	-	-	1	-	-	-	-	-	-
<i>Total</i>	-	-	-	-	1	-	-	-	-	-	-
<i>Polynesia (excluding Hawaii)</i>											
Cook Islands	-	-	2	-	1	-	-	-	-	-	1
Fiji	2	5	7	11	1	9	2	6	2	3	16
French Polynesia	-	-	-	-	-	-	1	-	-	-	1
Niue	-	-	-	-	-	1	-	-	-	-	-
Samoa	-	1	-	-	3	3	-	-	-	3	5
Tokelau	1	-	-	-	-	-	-	-	-	-	-
Tonga	1	-	2	1	1	-	2	-	1	-	1
<i>Total</i>	4	6	11	12	6	13	5	6	3	6	24
Total Oceania	103	125	120	89	102	98	92	86	100	142	164
Europe											
<i>United Kingdom & Ireland</i>											
UK	40	54	76	64	108	102	171	177	174	202	169
Ireland	4	9	1	1	2	5	4	9	7	6	8
<i>Total</i>	44	63	77	65	110	107	175	186	181	208	177
<i>Western Europe</i>											
Austria	1	-	1	-	-	-	1	1	3	1	-
Belgium	-	-	-	-	-	-	1	-	-	-	-
France	1	2	2	1	1	3	2	3	5	2	2
Germany	10	4	9	10	9	7	9	27	21	20	10
Netherlands	10	11	11	8	12	7	9	7	23	8	13
Switzerland	-	3	1	1	-	3	6	-	-	5	-
<i>Total</i>	22	20	24	20	22	20	28	38	52	36	25
<i>Northern Europe</i>											
Denmark	1	1	1	-	1	2	1	1	-	1	2
Finland	1	-	-	-	1	3	-	-	1	-	1
Iceland	-	-	-	-	-	-	1	-	-	-	-
Norway	-	-	-	-	-	-	-	2	2	-	-
Sweden	-	2	-	-	2	1	1	2	1	-	-
<i>Total</i>	2	3	1	-	4	6	3	5	4	1	3
<i>Southern Europe</i>											
Italy	-	1	2	3	-	2	-	4	-	-	-
Portugal	-	-	-	-	-	-	1	1	-	-	-
Spain	-	-	-	-	1	1	1	-	-	-	1
<i>Total</i>	-	1	2	3	1	3	2	5	-	-	1

(a) The Australia component consists of persons born in Australia who have settled overseas and returned.

Tasmania

Table 7.1 (continued) **Settler arrivals by birthplace, 1998-99 to 2008-09**

Birthplace	1998-99	1999-00	2000-01	2001-02	2002-03	2003-04	2004-05	2005-06	2006-07	2007-08	2008-09
<i>South Eastern Europe</i>											
Albania	-	-	2	1	-	-	1	-	-	-	-
Bosnia & Herzegovina (b)	15	3	2	8	-	1	-	-	-	2	-
Bulgaria	-	-	1	-	-	1	2	-	2	4	-
Croatia (b)	12	2	2	1	6	-	-	1	-	3	1
Cyprus	1	-	-	2	-	1	1	-	-	1	-
Fmr Yugo Rep of Macedonia (b)	-	-	-	1	-	-	-	-	1	1	-
Greece	-	-	3	-	-	1	1	1	3	1	1
Romania	1	2	2	4	-	1	1	-	1	2	5
Serbia (b)	-	-	-	-	-	-	-	-	-	1	-
Fmr Serbia & Montenegro (b)	52	8	28	65	24	8	9	-	3	-	2
Slovenia (b)	-	-	-	-	-	-	-	-	-	2	-
Total	81	15	40	82	30	13	15	2	10	17	9
<i>Eastern Europe</i>											
Belarus (c)	-	-	-	-	-	2	-	-	3	2	-
Czech Republic (c)	-	-	-	-	-	-	-	-	-	-	2
Former Czechoslovakia (c)	2	-	-	1	1	-	-	1	-	-	1
Hungary	3	1	-	-	1	-	-	-	-	2	-
Latvia (c)	-	1	-	1	2	-	2	-	-	-	1
Poland	3	1	4	-	4	7	8	3	5	1	7
Russian Federation (c)	-	1	-	-	1	-	2	3	1	1	1
Ukraine	-	-	-	-	-	-	2	-	1	-	-
Total	8	4	4	2	9	9	14	7	10	6	12
Total Europe	157	106	148	172	176	158	237	243	257	268	227
North Africa & The Middle East											
<i>North Africa</i>											
Algeria	-	-	-	1	-	-	-	-	-	-	-
Egypt	2	-	3	4	9	13	10	10	3	2	1
Libya	-	-	-	-	-	-	1	-	-	1	-
Morocco	1	-	-	-	-	-	-	-	-	1	-
Sudan	16	22	87	71	147	172	172	82	39	38	16
Tunisia	-	1	-	-	-	-	-	-	-	-	-
Total	19	23	90	76	156	185	183	92	42	42	17
<i>The Middle East</i>											
Bahrain	-	-	2	-	-	-	-	-	-	-	-
Iran	6	2	1	7	2	9	4	4	8	11	20
Iraq	1	5	13	4	13	19	5	6	6	2	12
Israel	-	-	-	-	-	-	-	2	2	-	-
Kuwait	-	-	-	-	-	1	1	-	-	1	1
Lebanon	-	-	1	2	2	2	1	2	2	2	-
Oman	-	-	-	-	-	-	-	1	-	-	-
Qatar	-	-	-	-	-	-	-	-	1	-	-
Saudi Arabia	-	4	-	-	-	-	2	-	-	1	2
Syria	2	1	1	-	4	1	1	4	1	1	1
Turkey	1	-	3	3	3	5	-	1	1	-	-
United Arab Emirates	-	-	-	-	-	-	-	-	-	-	3
Yemen	-	-	-	3	-	-	1	-	-	-	-
Total	10	12	21	19	24	37	15	20	21	18	39
Total North Africa & the Middle East	29	35	111	95	180	222	198	112	63	60	56

(b) As reliable data are not available for component countries prior to 1995-96, care should be taken when interpreting the data. Serbia and Montenegro was previously called the Federal Republic of Yugoslavia and since 1998-99 contains the Former Yugoslavia nfd.

(c) As reliable data are not available for component countries prior to 1995-96, care should be taken when interpreting the data.

(d) As reliable data are not available for component countries prior to 1995-96, care should be taken when interpreting the data.

Tasmania

Table 7.1 (continued) **Settler arrivals by birthplace, 1998-99 to 2008-09**

Birthplace	1998-99	1999-00	2000-01	2001-02	2002-03	2003-04	2004-05	2005-06	2006-07	2007-08	2008-09
Southeast Asia											
Burma (Myanmar)	-	-	-	2	-	1	1	-	44	34	60
Cambodia	-	-	-	2	-	-	1	-	1	-	1
East Timor	-	-	-	-	-	-	-	1	-	-	-
Indonesia	2	6	2	14	8	4	4	9	8	8	4
Laos	-	-	-	1	3	-	-	-	-	2	1
Malaysia	3	10	8	5	16	11	12	15	13	20	13
Philippines	15	16	28	18	28	30	40	33	49	46	53
Singapore	6	1	5	5	10	19	35	8	8	21	9
Thailand	4	11	3	16	13	19	10	12	14	25	47
Vietnam	3	4	3	6	7	3	1	3	5	5	6
Total Southeast Asia	33	48	49	69	85	87	104	81	142	161	194
Northeast Asia											
China (f)	12	11	17	15	27	25	31	29	56	62	78
Hong Kong (g)	5	5	1	2	3	3	5	3	4	6	7
Japan	1	2	7	2	5	9	8	4	12	14	10
Korea	3	8	4	6	5	11	35	16	21	32	11
Mongolia	-	-	1	-	3	-	-	2	-	-	-
Taiwan	-	4	5	5	2	1	-	8	6	8	2
Total Northeast Asia	21	30	35	30	45	49	79	62	99	122	108
Southern Asia											
Bangladesh	5	3	1	4	4	-	-	2	1	3	3
Bhutan	-	-	-	-	-	-	-	-	-	16	81
India	10	19	17	11	23	27	30	47	47	68	69
Maldives	-	-	-	-	-	-	-	-	2	-	-
Nepal	-	4	1	1	-	-	-	2	2	2	28
Pakistan	-	4	2	-	1	4	3	1	6	3	6
Sri Lanka	1	2	8	4	5	8	4	6	12	5	11
Total Southern Asia	16	32	29	20	33	39	37	58	70	97	198
Central Asia											
Afghanistan	-	-	5	-	4	39	12	2	11	15	17
Kazakhstan (d)	-	-	-	-	1	-	-	-	-	1	-
Uzbekistan (d)	-	-	-	-	-	-	-	1	-	-	1
Total Central Asia	-	-	5	-	5	39	12	3	11	16	18
Northern America											
Canada	15	15	12	3	10	6	6	14	10	7	9
USA	10	19	7	11	20	17	34	33	19	23	26
Total Northern America	25	34	19	14	30	23	40	47	29	30	35
South America, Central America & the Caribbean											
<i>South America</i>											
Argentina	-	1	-	-	-	9	4	4	2	1	-
Bolivia	-	-	1	-	-	-	-	-	-	1	-
Brazil	8	-	-	2	2	1	4	7	2	6	3
Chile	-	2	1	-	-	2	2	2	-	8	3
Colombia	-	-	-	1	-	1	-	1	1	1	2
Paraguay	-	-	-	1	-	-	-	-	1	-	-
Peru	-	-	-	1	4	-	3	2	1	2	1
Venezuela	-	-	-	-	-	-	-	-	1	-	-
Total	8	3	2	5	6	13	13	16	8	19	9

(d) As reliable data are not available for component countries prior to 1995-96, care should be taken when interpreting the data.

(f) Excluding SARs and Taiwan.

(g) SAR of China.

Tasmania

Table 7.1 (continued) Settler arrivals by birthplace, 1998-99 to 2008-09

Birthplace	1998-99	1999-00	2000-01	2001-02	2002-03	2003-04	2004-05	2005-06	2006-07	2007-08	2008-09
<i>Central America</i>											
Costa Rica	-	-	-	1	1	-	-	3	-	-	-
El Salvador	1	-	-	-	-	-	-	-	-	1	2
Mexico	-	-	-	-	-	1	1	1	-	-	1
Total	1	-	-	1	1	1	1	4	-	1	3
<i>The Caribbean</i>											
Cuba	-	-	1	-	-	1	-	-	-	-	-
Haiti	2	-	-	-	-	-	-	-	-	-	-
Jamaica	-	-	-	-	-	-	-	-	1	-	-
Netherlands Antilles	-	-	-	-	-	-	-	-	-	1	-
Trinidad & Tobago	-	-	-	-	-	1	-	-	-	-	-
Total	2	-	1	-	-	2	-	-	1	1	-
Total South America, Central America & The Caribbean	11	3	3	6	7	16	14	20	9	21	12
Sub-Saharan Africa											
<i>Central & West Africa</i>											
Congo	-	-	-	-	1	-	1	-	3	-	2
Congo Democratic Republic	-	-	-	-	-	-	-	1	11	35	7
Côte d'Ivoire	-	-	-	-	-	-	-	-	1	-	1
Ghana	-	-	-	-	1	-	4	5	4	2	1
Guinea	-	-	-	-	1	2	1	-	6	4	2
Liberia	-	-	-	-	-	-	8	8	15	19	4
Mali	-	-	-	-	-	-	-	-	-	1	-
Niger	-	1	-	-	-	-	-	2	-	-	-
Nigeria	-	-	-	-	-	3	-	-	-	-	4
Senegal	-	-	-	-	-	-	-	-	1	-	-
Sierra Leone	-	-	-	14	33	10	42	37	19	12	9
Togo	-	-	-	-	-	-	1	-	-	1	-
Total	-	1	-	14	36	15	57	53	60	74	30
<i>Southern & East Africa</i>											
Botswana	-	-	-	-	-	-	-	-	-	-	1
Burundi	-	-	-	-	-	1	1	21	19	5	1
Eritrea	-	-	-	8	6	13	3	3	2	11	12
Ethiopia	11	7	9	5	46	54	27	19	40	18	20
Kenya	5	-	1	4	10	5	9	1	7	2	5
Malawi	-	-	-	-	1	-	-	-	-	3	1
Mauritius	-	-	-	-	-	-	-	-	-	-	2
Mozambique	-	-	-	-	-	-	1	-	1	-	-
Namibia	-	-	-	-	-	-	-	-	-	1	2
Rwanda	-	-	-	-	12	1	-	-	4	1	-
Seychelles	-	-	-	-	-	-	-	3	-	-	1
Somalia	11	-	2	9	2	1	-	-	1	-	1
South Africa	17	17	16	35	27	34	24	34	26	34	104
Tanzania	-	-	-	-	-	1	-	10	11	9	1
Uganda	-	-	-	2	3	7	-	7	7	-	-
Zambia	-	-	-	-	-	3	1	-	-	-	-
Zimbabwe	2	1	2	9	2	6	7	10	4	10	20
Total	46	25	30	72	109	126	73	108	122	94	171
Total Sub-Saharan Africa	46	26	30	86	145	141	130	161	182	168	201
Supplementary codes (i)											
Fmr USSR	1	5	15	7	3	9	1	6	6	7	6
Total	1	5	15	7	3	9	1	6	6	7	6
Not stated	-	-	-	1	-	3	-	-	-	-	-
Total all countries	442	444	564	589	811	884	944	879	968	1 092	1 219

(i) Supplementary codes cannot be classified to any major region in the Standard Australian Classification of Countries (SACC). This may lead to under reporting of their component countries in the rest of the table, care should be taken when interpreting the data.

Northern Territory

Table 8.1 Settler arrivals by birthplace, 1998-99 to 2008-09

Birthplace	1998-99	1999-00	2000-01	2001-02	2002-03	2003-04	2004-05	2005-06	2006-07	2007-08	2008-09
Oceania											
<i>Australia & External Territories (a)</i>	3	4	4	1	2	6	5	5	1	3	8
<i>New Zealand</i>	93	101	91	63	34	66	46	96	84	106	140
<i>Melanesia</i>											
New Caledonia	-	-	-	-	-	-	-	-	1	-	-
Papua New Guinea	1	4	4	9	6	13	8	6	2	10	5
Solomon Islands	5	1	1	-	-	1	3	-	-	-	-
Vanuatu	-	-	-	-	-	-	-	-	1	2	-
<i>Total</i>	6	5	5	9	6	14	11	6	4	12	5
<i>Micronesia</i>											
Kiribati	1	-	-	4	-	-	1	-	-	-	-
<i>Total</i>	1	-	-	4	-	-	1	-	-	-	-
<i>Polynesia (excluding Hawaii)</i>											
Cook Islands	-	-	-	-	-	1	-	-	-	1	-
Fiji	2	-	6	4	4	1	1	11	2	4	10
Samoa	1	-	-	-	-	1	1	2	-	1	4
Tonga	-	2	2	-	2	1	-	2	-	-	-
<i>Total</i>	3	2	8	4	6	4	2	15	2	6	14
Total Oceania	106	112	108	81	48	90	65	122	91	127	167
Europe											
<i>United Kingdom & Ireland</i>											
UK	79	61	51	36	52	90	91	67	109	106	163
Ireland	3	5	4	6	6	5	6	6	7	8	8
<i>Total</i>	82	66	55	42	58	95	97	73	116	114	171
<i>Western Europe</i>											
Austria	-	-	-	-	-	2	-	-	-	1	-
Belgium	4	-	-	-	-	-	2	-	-	2	2
France	2	6	3	3	2	2	1	1	2	1	2
Germany	11	10	5	7	7	4	14	15	17	5	32
Netherlands	3	11	1	3	2	2	7	1	10	3	12
Switzerland	9	3	-	2	2	2	3	4	-	2	1
<i>Total</i>	29	30	9	15	13	12	27	21	29	14	49
<i>Northern Europe</i>											
Denmark	2	3	1	-	3	-	-	-	1	-	1
Iceland	-	-	1	-	-	-	-	-	-	-	-
Norway	-	-	-	-	-	1	-	-	-	-	-
Sweden	-	-	1	-	3	1	-	-	-	2	1
<i>Total</i>	2	3	3	-	6	2	-	-	1	2	2
<i>Southern Europe</i>											
Italy	-	2	-	-	-	2	-	2	4	5	-
Malta	-	-	-	-	-	-	1	1	1	-	-
Portugal	-	-	1	1	-	1	1	-	-	-	1
Spain	1	1	-	-	1	-	-	1	-	3	1
<i>Total</i>	1	3	1	1	1	3	2	4	5	8	2

(a) The Australia component consists of persons born in Australia who have settled overseas and returned.

Northern Territory

Table 8.1 (continued) **Settler arrivals by birthplace, 1998-99 to 2008-09**

Birthplace	1998-99	1999-00	2000-01	2001-02	2002-03	2003-04	2004-05	2005-06	2006-07	2007-08	2008-09
<i>South Eastern Europe</i>											
Albania	1	-	1	-	-	-	-	1	-	1	-
Bosnia & Herzegovina (b)	9	7	-	2	-	-	1	2	-	-	-
Bulgaria	-	-	-	1	1	-	-	-	1	1	1
Croatia (b)	-	-	1	3	-	-	1	1	-	-	-
Cyprus	2	1	1	-	-	-	-	1	1	1	1
Fmr Yugo Rep of Macedonia (b)	-	-	-	-	-	-	-	1	-	1	-
Greece	14	6	3	4	-	5	7	9	6	6	12
Romania	-	-	-	-	2	1	2	1	-	-	-
Serbia (b)	-	-	-	-	-	-	-	-	-	1	-
Fmr Serbia & Montenegro (b)	5	2	-	2	5	1	1	1	1	1	1
Total	31	16	6	12	8	7	12	17	9	12	15
<i>Eastern Europe</i>											
Czech Republic (d)	-	-	-	2	-	-	-	-	-	3	-
Estonia	-	-	-	-	-	-	-	-	-	-	1
Former Czechoslovakia (d)	-	1	1	1	-	-	1	-	2	-	-
Hungary	2	-	-	1	-	-	3	-	1	1	1
Poland	1	1	4	-	-	1	2	6	-	-	1
Russian Federation	-	-	-	4	-	-	1	-	-	4	2
Slovakia (d)	-	-	-	-	-	-	1	-	-	-	-
Ukraine	-	-	-	-	2	-	-	-	-	-	1
Total	3	2	5	8	2	1	8	6	3	8	6
Total Europe	148	120	79	78	88	120	146	121	163	158	245
North Africa & The Middle East											
<i>North Africa</i>											
Egypt	-	-	1	4	1	4	6	9	1	-	-
Morocco	-	1	-	-	1	1	-	-	-	-	-
Sudan	12	17	47	13	56	52	67	45	14	5	9
Total	12	18	48	17	58	57	73	54	15	5	9
<i>The Middle East</i>											
Iran	2	-	1	-	2	1	1	-	2	2	5
Iraq	6	5	4	2	12	5	2	7	1	3	4
Israel	-	-	2	-	1	1	-	-	1	1	3
Jordan	-	-	-	-	-	-	1	-	-	1	1
Kuwait	-	-	-	-	-	-	-	-	-	2	1
Lebanon	2	-	-	2	2	1	2	-	4	4	3
Oman	-	-	-	-	-	-	-	-	-	-	3
Qatar	-	-	1	-	-	-	-	-	1	1	-
Syria	-	-	1	-	-	-	-	-	-	1	-
Turkey	1	2	-	1	-	-	1	3	-	1	1
United Arab Emirates	-	-	-	-	-	1	-	-	1	-	1
Yemen	-	-	2	-	-	-	-	-	-	-	-
Middle East nfd	-	-	1	-	-	-	-	-	-	-	-
Total	11	7	12	5	17	9	7	10	10	16	22
Total North Africa & the Middle East	23	25	60	22	75	66	80	64	25	21	31

(b) As reliable data are not available for component countries prior to 1995-96, care should be taken when interpreting the data. Serbia and Montenegro was previously called the Federal Republic of Yugoslavia and since 1998-99 contains the Former Yugoslavia nfd.

(c) As reliable data are not available for component countries prior to 1995-96, care should be taken when interpreting the data.

(d) As reliable data are not available for component countries prior to 1995-96, care should be taken when interpreting the data.

Northern Territory

Table 8.1 (continued) **Settler arrivals by birthplace, 1998-99 to 2008-09**

Birthplace	1998-99	1999-00	2000-01	2001-02	2002-03	2003-04	2004-05	2005-06	2006-07	2007-08	2008-09
Southeast Asia											
Brunei	6	1	-	3	-	3	1	8	1	1	2
Burma (Myanmar)	-	-	1	1	3	-	2	-	6	19	32
Cambodia	3	3	2	7	5	4	2	6	5	8	3
East Timor (e)	-	-	5	7	13	11	7	9	9	7	5
Indonesia (e)	26	19	22	40	39	33	20	32	40	50	52
Laos	-	-	-	-	1	-	1	-	-	1	-
Malaysia	3	8	20	4	9	12	3	21	21	34	16
Philippines	41	47	30	40	46	53	48	66	118	83	94
Singapore	7	2	6	12	2	4	5	47	25	29	25
Thailand	9	12	12	31	22	28	18	17	38	61	65
Vietnam	11	9	5	12	12	10	14	12	14	18	24
Total Southeast Asia	106	101	103	157	152	158	121	218	277	311	318
Northeast Asia											
China (f)	11	11	11	16	8	14	15	29	44	46	38
Hong Kong (g)	10	2	-	1	1	-	2	4	1	3	6
Japan	6	1	2	3	5	2	4	2	4	6	4
Korea	1	3	2	3	1	3	3	3	-	5	7
Taiwan	2	-	1	2	-	1	1	2	2	3	6
Total Northeast Asia	30	17	16	25	15	20	25	40	51	63	61
Southern Asia											
Bangladesh	-	6	1	-	3	5	1	4	5	8	7
Bhutan	-	-	-	-	-	-	-	-	-	1	13
India	13	24	20	18	14	25	32	32	33	61	79
Nepal	-	-	-	-	-	3	-	3	2	4	11
Pakistan	3	1	6	1	8	10	6	9	8	10	4
Sri Lanka	3	7	13	2	10	5	9	2	11	8	14
Total Southern Asia	19	38	40	21	35	48	48	50	59	92	128
Central Asia											
Afghanistan	1	-	2	1	1	2	-	3	5	3	2
Total Central Asia	1	-	2	1	1	2	-	3	5	3	2
Northern America											
Canada	3	4	6	1	1	6	4	4	1	3	9
USA	12	12	15	8	6	10	6	22	15	6	8
Total Northern America	15	16	21	9	7	16	10	26	16	9	17
South America, Central America & the Caribbean											
<i>South America</i>											
Argentina	-	-	1	-	-	-	-	1	-	-	1
Bolivia	-	-	-	-	2	-	-	-	-	-	1
Brazil	1	1	2	-	1	1	1	3	2	6	4
Chile	-	-	-	-	-	1	-	-	-	-	-
Colombia	-	-	-	3	-	-	-	-	1	2	2
Ecuador	-	-	-	-	-	-	-	1	-	1	-
Falkland Islands	-	-	-	-	-	2	-	-	-	-	-
Peru	-	-	-	-	2	2	1	-	4	-	-
Venezuela	-	-	-	-	-	-	-	-	-	1	2
Total	1	1	3	3	5	6	2	5	7	10	10

(e) East Timor previously recorded under Indonesia, care should be taken when interpreting the data.

(f) Excluding SARs and Taiwan.

(g) SAR of China.

Northern Territory

Table 8.1 (continued) Settler arrivals by birthplace, 1998-99 to 2008-09

Birthplace	1998-99	1999-00	2000-01	2001-02	2002-03	2003-04	2004-05	2005-06	2006-07	2007-08	2008-09
<i>Central America</i>											
Belize	-	-	-	-	-	-	-	-	-	1	-
Guatemala	-	-	-	-	-	-	-	1	-	4	-
Honduras	-	-	-	-	-	-	-	1	1	-	-
Mexico	1	-	-	-	-	-	-	-	-	-	-
Total	1	-	-	-	-	-	-	2	1	5	-
<i>The Caribbean</i>											
Cuba	-	-	-	-	-	-	-	-	-	2	2
Dominican Republic	-	-	-	-	-	-	1	-	-	-	-
Haiti	-	-	-	6	-	-	-	-	-	-	-
Jamaica	-	-	-	-	-	-	-	1	-	-	-
St Kitts & Nevis	-	-	-	-	-	-	-	-	-	1	-
Total	-	-	-	6	-	-	1	1	-	3	2
Total South America, Central America & The Caribbean	2	1	3	9	5	6	3	8	8	18	12
Sub-Saharan Africa											
<i>Central & West Africa</i>											
Cameroon	-	-	-	-	-	-	-	-	-	1	-
Congo	-	-	-	-	-	16	5	3	1	1	-
Congo, Democratic Republic of	-	-	-	-	-	-	-	-	38	17	7
Cote D'Ivoire	-	-	-	-	-	-	1	1	-	3	-
Ghana	-	-	-	-	-	4	1	5	4	1	2
Guinea	-	-	-	-	-	3	4	2	2	-	1
Liberia	-	-	-	20	3	4	20	24	11	12	10
Nigeria	-	-	-	1	6	3	1	1	-	1	4
Sierra Leone	-	-	3	1	-	-	2	2	-	3	1
Total	-	-	3	22	9	30	34	38	56	39	25
<i>Southern & East Africa</i>											
Botswana	-	-	-	-	1	-	-	-	1	-	-
Burundi	-	-	-	-	-	-	4	1	4	2	2
Djibouti	-	-	-	1	-	-	-	-	-	-	-
Eritrea	-	-	-	-	2	-	-	-	-	-	-
Ethiopia	8	15	7	7	9	10	10	2	5	2	6
Kenya	4	1	9	-	7	6	4	25	9	4	4
Madagascar	-	-	-	1	-	-	-	-	1	-	-
Malawi	-	-	-	-	-	-	-	-	1	-	1
Mauritius	-	-	-	-	3	-	-	-	-	-	-
Mozambique	-	-	-	1	-	-	-	-	-	-	-
Namibia	-	-	-	-	-	-	-	1	-	-	1
Rwanda	-	-	-	-	-	-	-	7	1	1	-
Seychelles	-	-	-	-	-	-	-	-	-	-	3
Somalia	1	-	2	-	1	1	6	10	31	3	4
South Africa	7	19	8	12	17	8	13	11	9	14	27
Tanzania	-	-	-	-	-	1	1	4	6	7	4
Uganda	-	-	-	-	2	3	5	9	11	1	2
Zambia	-	-	-	2	1	-	1	2	4	2	1
Zimbabwe	4	4	10	4	-	5	12	14	9	5	16
Total	24	39	36	28	43	34	56	86	92	41	71
Total Sub-Saharan Africa	24	39	39	50	52	64	90	124	148	80	96
Supplementary codes (i)											
Fmr USSR	-	2	1	6	5	6	4	4	-	6	2
Total	-	2	1	6	5	6	4	4	-	6	2
Not stated	-	-	-	-	-	-	-	-	-	-	-
Total all countries	474	471	472	459	483	596	592	780	843	888	1 079

(i) Supplementary codes cannot be classified to any major region in the Standard Australian Classification of Countries (SACC). This may lead to under reporting of their component countries in the rest of the table, care should be taken when interpreting the data.

Australian Capital Territory

Table 9.1 Settler arrivals by birthplace, 1998-99 to 2008-09

Birthplace	1998-99	1999-00	2000-01	2001-02	2002-03	2003-04	2004-05	2005-06	2006-07	2007-08	2008-09
Oceania											
<i>Australia & External Territories (a)</i>	4	4	9	5	4	9	14	6	6	1	13
<i>New Zealand</i>	161	124	195	133	87	89	85	96	123	117	124
<i>Melanesia</i>											
New Caledonia	-	-	-	-	-	-	1	-	1	-	-
Papua New Guinea	-	-	-	-	7	-	6	-	4	3	4
Solomon Islands	-	3	-	-	-	1	2	1	-	-	3
Vanuatu	-	-	-	-	1	-	-	-	-	-	-
<i>Total</i>	-	3	-	-	8	1	9	1	5	3	7
<i>Micronesia</i>											
Guam	-	-	-	-	-	-	-	-	1	-	-
Northern Mariana Islands	-	-	-	-	-	-	-	-	-	1	-
<i>Total</i>	-	-	-	-	-	-	-	-	1	1	-
<i>Polynesia (excluding Hawaii)</i>											
Cook Islands	-	-	-	2	-	1	-	-	-	1	2
Fiji	16	16	24	12	22	12	18	26	16	11	25
Niue	1	-	-	-	-	2	1	-	-	2	-
Samoa	10	6	7	6	8	7	5	4	1	6	4
Samoa American	-	2	1	-	-	-	-	-	-	-	-
Tokelau	-	-	-	-	-	-	-	-	-	-	1
Tonga	3	3	1	3	3	2	3	3	7	1	5
Tuvalu	-	1	-	-	-	-	-	-	-	-	-
<i>Total</i>	30	28	33	23	33	24	27	33	24	21	37
Total Oceania	195	159	237	161	132	123	135	136	159	143	181
Europe											
<i>United Kingdom & Ireland</i>											
UK	69	70	100	92	105	158	138	133	137	175	236
Ireland	2	2	2	-	6	2	6	5	3	18	5
<i>Total</i>	71	72	102	92	111	160	144	138	140	193	241
<i>Western Europe</i>											
Austria	1	2	2	2	-	1	-	2	7	-	3
Belgium	1	1	1	4	-	2	-	-	1	3	1
France	2	3	5	10	6	6	3	8	4	5	8
Germany	3	10	24	10	8	12	12	21	18	20	12
Netherlands	4	9	6	8	2	2	4	7	3	10	6
Switzerland	7	1	2	4	-	1	-	4	2	7	2
<i>Total</i>	18	26	40	38	16	24	19	42	35	45	32
<i>Northern Europe</i>											
Denmark	3	2	1	1	6	1	-	-	-	1	-
Finland	-	1	1	-	3	1	1	2	1	-	-
Iceland	-	-	2	-	-	-	-	-	-	-	-
Norway	-	-	1	-	1	4	-	-	1	-	-
Sweden	2	3	-	4	5	3	3	3	3	2	3
<i>Total</i>	5	6	5	5	15	9	4	5	5	3	3

(a) The Australia component consists of persons born in Australia who have settled overseas and returned.

Australian Capital Territory

Table 9.1 (continued) **Settler arrivals by birthplace, 1998-99 to 2008-09**

Birthplace	1998-99	1999-00	2000-01	2001-02	2002-03	2003-04	2004-05	2005-06	2006-07	2007-08	2008-09
<i>Southern Europe</i>											
Italy	4	-	1	25	4	3	2	4	1	3	7
Malta	-	1	2	-	1	-	-	2	-	14	2
Portugal	-	-	-	-	1	2	-	-	-	-	-
Spain	2	-	1	2	-	1	-	1	3	8	1
Total	6	1	4	27	6	6	2	7	4	25	10
<i>South Eastern Europe</i>											
Albania	-	1	-	-	6	-	-	-	2	1	-
Bosnia & Herzegovina (b)	10	6	7	5	1	3	1	1	1	-	-
Bulgaria	-	-	-	1	4	-	3	-	-	4	-
Croatia (b)	8	13	22	4	4	1	-	-	6	-	-
Cyprus	-	-	-	-	-	1	-	-	-	-	1
Fmr Yugo Rep of Macedonia (b)	8	-	4	11	16	1	11	7	5	5	1
Greece	1	-	1	-	3	-	-	1	2	1	-
Montenegro (b)	-	-	-	-	-	-	-	-	1	-	-
Romania	8	12	5	1	1	7	3	2	3	5	6
Serbia (b)	-	-	-	-	-	-	-	-	-	3	4
Fmr Serbia & Montenegro (b)	31	42	43	35	13	11	10	13	3	11	4
Slovenia (b)	-	1	-	-	1	-	-	2	-	1	1
Total	66	75	82	57	49	24	28	26	23	31	17
<i>Eastern Europe</i>											
Belarus (c)	-	2	-	-	-	3	-	-	-	-	-
Czech Republic (d)	1	1	-	-	1	-	-	-	-	-	-
Estonia (c)	-	-	1	-	-	-	-	-	-	-	2
Former Czechoslovakia (d)	3	2	-	1	7	1	1	1	3	2	-
Hungary	1	-	-	2	1	1	-	-	-	-	-
Latvia (c)	-	-	-	-	1	-	-	1	-	1	1
Lithuania (c)	-	-	-	-	1	-	-	-	-	-	-
Poland	6	4	6	5	5	-	2	8	1	3	4
Russian Federation (c)	2	1	2	4	3	4	8	5	3	5	5
Slovakia (d)	-	-	-	-	-	1	-	1	-	-	-
Ukraine	-	3	1	1	-	1	1	3	2	-	5
Total	13	13	10	13	19	11	12	19	9	11	17
Total Europe	179	193	243	232	216	234	209	237	216	308	320
North Africa & The Middle East											
<i>North Africa</i>											
Algeria	-	-	14	1	-	-	-	1	-	1	-
Egypt	3	1	1	1	1	5	2	12	11	11	3
Libya	-	-	-	-	-	-	-	-	-	1	-
Morocco	-	-	-	1	-	1	2	1	-	1	7
Sudan	15	2	7	18	15	50	65	28	20	22	12
Total	18	3	22	21	16	56	69	42	31	36	22

(b) As reliable data are not available for component countries prior to 1995-96, care should be taken when interpreting the data. Serbia and Montenegro was previously called the Federal Republic of Yugoslavia and since 1998-99 contains the Former Yugoslavia nfd.

(c) As reliable data are not available for component countries prior to 1995-96, care should be taken when interpreting the data.

(d) As reliable data are not available for component countries prior to 1995-96, care should be taken when interpreting the data.

Australian Capital Territory

Table 9.1 (continued) **Settler arrivals by birthplace, 1998-99 to 2008-09**

Birthplace	1998-99	1999-00	2000-01	2001-02	2002-03	2003-04	2004-05	2005-06	2006-07	2007-08	2008-09
<i>The Middle East</i>											
Gaza Strip & West Bank	1	-	-	-	-	-	-	-	-	-	-
Iran	4	8	15	13	16	6	19	12	16	5	20
Iraq	8	7	7	16	37	12	10	21	12	42	41
Israel	-	-	-	-	-	4	1	8	1	5	2
Jordan	1	3	4	1	1	2	5	2	2	1	5
Kuwait	-	-	1	-	-	-	-	-	2	2	-
Lebanon	8	5	8	6	10	6	9	7	7	11	10
Saudi Arabia	-	-	-	1	1	3	1	-	1	-	-
Syria	-	1	-	5	1	-	1	-	2	2	1
Turkey	1	2	5	2	6	3	4	2	4	5	9
United Arab Emirates	-	-	1	1	2	-	-	-	2	3	5
Yemen	-	-	-	-	-	1	-	-	6	1	2
Middle East nfd	-	-	-	-	-	-	-	-	-	-	1
Total	23	26	41	45	74	37	50	52	55	77	96
Total North Africa & the Middle East	41	29	63	66	90	93	119	94	86	113	118
Southeast Asia											
Brunei	-	-	-	-	1	-	-	-	-	-	-
Burma (Myanmar)	6	5	6	23	9	5	10	10	11	58	48
Cambodia	-	2	4	4	3	7	8	6	9	6	8
East Timor (e)	-	-	-	1	-	1	-	1	1	1	-
Indonesia (e)	9	10	11	37	12	9	8	13	20	13	14
Laos	-	1	4	1	3	1	2	3	-	4	1
Malaysia	8	7	9	14	6	26	16	21	14	17	16
Philippines	27	28	49	51	19	33	43	77	53	88	94
Singapore	1	-	10	5	9	6	16	16	7	7	4
Thailand	7	13	6	27	22	20	16	26	19	24	45
Vietnam	18	11	28	25	34	29	18	37	32	34	37
Total Southeast Asia	76	77	127	188	118	137	137	210	166	252	267
Northeast Asia											
China (f)	45	77	76	82	58	87	125	143	140	153	188
Hong Kong (g)	13	8	17	6	8	7	11	14	10	8	11
Japan	7	16	5	16	11	4	9	10	9	15	11
Korea	9	19	15	6	16	14	12	22	13	18	52
Macau (g)	-	-	-	1	1	-	-	3	-	-	-
Mongolia	1	-	1	2	-	-	-	-	-	-	-
Taiwan	5	8	13	19	9	5	7	2	5	-	3
Total Northeast Asia	80	128	127	132	103	117	164	194	177	194	265
Southern Asia											
Bangladesh	9	8	10	14	16	17	40	25	26	27	40
Bhutan	-	-	-	-	-	-	-	-	-	-	5
India	44	67	90	58	67	115	112	117	168	198	300
Nepal	-	2	-	1	6	-	9	2	7	5	15
Pakistan	8	2	32	42	11	26	25	23	29	39	43
Sri Lanka	19	25	43	37	15	20	41	41	58	53	88
Total Southern Asia	80	104	175	152	115	178	227	208	288	322	491

(e) East Timor previously recorded under Indonesia, care should be taken when interpreting the data.

(f) Excluding SARs and Taiwan.

(g) SAR of China.

Australian Capital Territory

Table 9.1 (continued) **Settler arrivals by birthplace, 1998-99 to 2008-09**

Birthplace	1998-99	1999-00	2000-01	2001-02	2002-03	2003-04	2004-05	2005-06	2006-07	2007-08	2008-09
Central Asia											
Afghanistan	3	14	5	19	8	19	10	16	7	19	26
Armenia (d)	-	-	-	-	-	-	1	-	-	-	-
Azerbaijan (d)	-	-	-	-	1	-	-	-	-	-	-
Georgia (d)	-	4	-	-	-	-	-	-	-	-	-
Kazakhstan (d)	-	-	1	-	-	-	-	2	-	2	1
Turkmenistan (d)	-	-	-	-	-	-	-	-	-	-	1
Uzbekistan (d)	-	-	-	-	1	-	-	-	-	-	1
Total Central Asia	3	18	6	19	10	19	11	18	7	21	29
Northern America											
Bermuda	-	-	-	-	-	1	-	1	-	-	3
Canada	10	12	12	10	14	13	16	17	15	8	14
USA	28	18	31	23	29	27	28	41	36	23	41
Total Northern America	38	30	43	33	43	41	44	59	51	31	58
South America, Central America & the Caribbean											
<i>South America</i>											
Argentina	-	4	1	2	4	4	2	4	1	2	6
Bolivia	-	-	-	-	-	-	-	-	1	1	-
Brazil	2	5	14	13	10	10	7	2	6	4	3
Chile	1	-	2	1	7	4	3	4	6	6	4
Colombia	-	-	1	-	5	1	1	2	5	1	3
Ecuador	-	-	-	-	1	1	1	-	-	1	-
Guyana	-	-	-	-	-	-	-	-	-	-	1
Paraguay	-	-	-	-	-	-	1	-	-	-	-
Peru	1	-	-	-	1	3	4	2	4	5	2
Suriname	-	-	-	-	-	-	-	-	-	-	1
Uruguay	-	-	-	-	-	-	-	-	1	-	-
Venezuela	-	1	-	-	-	-	-	5	-	1	1
Total	4	10	18	16	28	23	19	19	24	21	21
<i>Central America</i>											
El Salvador	-	-	-	-	-	-	-	-	-	2	1
Guatemala	-	-	-	-	-	1	-	-	1	-	1
Mexico	2	1	2	1	7	6	3	-	-	1	1
Nicaragua	-	-	-	-	-	-	-	1	-	-	-
Panama	-	-	-	-	-	-	1	-	-	-	1
Total	2	1	2	1	7	7	4	1	1	3	4
<i>The Caribbean</i>											
Cuba	-	-	-	1	-	-	-	-	-	-	-
Jamaica	-	-	-	-	-	-	-	1	-	-	-
Virgin Islands United States	-	-	-	-	-	1	-	-	-	-	-
Total	-	-	-	1	-	1	-	1	-	-	-
Total South America, Central America & The Caribbean	6	11	20	18	35	31	23	21	25	24	25

(d) As reliable data are not available for component countries prior to 1995-96, care should be taken when interpreting the data.

Australian Capital Territory

Table 9.1 (continued) **Settler arrivals by birthplace, 1998-99 to 2008-09**

Birthplace	1998-99	1999-00	2000-01	2001-02	2002-03	2003-04	2004-05	2005-06	2006-07	2007-08	2008-09
Sub-Saharan Africa											
<i>Central & West Africa</i>											
Cameroon	-	-	-	-	-	-	-	-	1	-	-
Congo	-	-	-	-	1	1	-	2	1	-	-
Congo Democratic Republic of	-	-	-	-	-	-	-	12	1	3	5
Ghana	1	4	5	3	3	7	4	7	3	4	-
Guinea	-	-	-	-	-	1	-	-	-	2	2
Liberia	1	-	-	1	3	2	2	39	5	5	5
Niger	-	1	-	4	-	-	-	-	1	-	-
Nigeria	2	-	1	2	-	1	2	3	2	5	11
Senegal	-	-	-	-	-	-	1	-	-	-	-
Sierra Leone	-	-	-	8	-	8	43	8	7	6	1
Total	4	5	6	18	7	20	52	71	21	25	24
<i>Southern & East Africa</i>											
Botswana	-	-	-	-	-	1	1	1	-	1	2
Burundi	-	-	-	-	-	-	3	32	11	-	1
Eritrea (h)	-	1	-	-	-	2	6	2	-	2	1
Ethiopia (h)	-	5	4	11	6	14	18	3	4	5	12
Kenya	8	1	3	4	5	8	12	3	13	5	7
Lesotho	-	-	-	-	-	-	3	-	-	-	-
Madagascar	-	-	-	-	-	-	-	-	-	-	1
Malawi	-	-	-	-	-	-	-	3	-	-	1
Mauritius	-	2	1	-	3	-	1	-	-	9	20
Réunion	-	-	-	-	-	-	-	-	1	-	-
Rwanda	-	-	-	-	-	-	-	-	-	1	1
Seychelles	-	-	-	-	-	-	-	-	-	-	1
Somalia	3	1	1	1	3	1	-	1	1	-	6
South Africa	27	29	37	22	44	18	35	9	35	39	72
Tanzania	-	-	-	-	-	1	1	25	3	7	3
Uganda	1	1	-	-	-	1	1	1	4	3	1
Zambia	1	-	-	5	1	-	1	-	1	-	-
Zimbabwe	2	2	1	1	8	3	5	29	38	5	17
Total	42	42	47	44	70	49	87	109	111	77	146
Total											
Sub-Saharan Africa	46	47	53	62	77	69	139	180	132	102	170
Supplementary codes (i)											
Fmr USSR	19	12	21	12	18	7	9	15	4	8	18
Total	19	12	21	12	18	7	9	15	4	8	18
Not stated	-	1	-	-	-	1	-	-	-	-	-
Total all countries	763	809	1 115	1 075	957	1 050	1 217	1 372	1 311	1 518	1 942

(h) As reliable data are not available for component countries prior to 1995-96, care should be taken when interpreting the data.

(i) Supplementary codes cannot be classified to any major region in the Standard Australian Classification of Countries (SACC). This may lead to under reporting of their component countries in the rest of the table, care should be taken when interpreting the data.

Explanatory notes

Definition of 'Settler'

Settlers comprise persons arriving in Australia who are one of the following:

- Holders of a permanent visa.
- Holders of a temporary (provisional) visa where there is a clear intention to settle.
- New Zealand citizens indicating an intention to settle.
- Persons otherwise eligible to settle.

Migration and humanitarian programs

The Migration (non-Humanitarian) program is made up of the Family Stream, Skill Stream and Special Eligibility migrants. The Humanitarian program is made up of Refugee, Special Humanitarian and Special Assistance migrants.

Eligibility categories

Eligibility categories reflect both the Migration and Humanitarian programs' permanent visa sub-classes under which settlers entered Australia. In addition there are a number of categories of settlers which are not covered by the Migration or Humanitarian programs.

The Family Stream consists of a number of categories under which a potential migrant can be sponsored by a relative who is an Australian citizen or a permanent resident of Australia. The Family Stream comprises the following categories:

- Spouse
- Prospective marriage
- Child
- Adoption
- Parent (meeting the balance of family test)
- Aged dependent relative
- Last remaining relative
- Orphan dependent relative
- Special need relative
- Interdependency.

The Skill Stream component of the Migration Program is designed to contribute to Australia's economic growth. It consists of a number of categories for prospective migrants related to demand in Australia for their particular occupational skills, outstanding talents or business skills. These categories are:

General Skilled Migration

- Regional Sponsored (introduced 1 September 2007) for skilled persons who are unable to meet the pass mark for a Skilled Independent visa and wish to live for two years and work at least 12 months in a specified regional area of Australia and obtain either nomination by a participating state or territory government agency or sponsorship by an eligible relative living in a designated area of Australia.
- Skilled Sponsored (introduced 1 September 2007) for skilled persons unable to meet the Skilled-Independent pass mark. Applicants must be either sponsored by an eligible relative living in Australia or nominated by a participating state or territory government. Applicants must pass a points test lower than that for the Skilled Independent visa.
- Skilled Australian Sponsored (to 31 August 2007, previously known as Concessional Family to 30 June 1997 then as Australian Linked to 30 June 1999) allows Australian citizens or residents to sponsor their parents, brothers, sisters, nephews, nieces and non-dependent children. Applicants must meet a points test which takes into account their age and work skills as well as various sponsor attributes.
- Skilled Designated Area Sponsored (to 31 August 2007 Regional Linked from 1 November 1996 to 30 June 1999), allows sponsorship of skilled relatives to designated areas of Australia. Both applicants and sponsors must satisfy certain criteria.
- Independent—for applicants that are not sponsored, whose education, skills, English language ability and ready employability will contribute to the Australian economy.
- State/Territory Nominated Independent (to 31 August 2007) for persons who are interested in settling in states or territories where their skills are in demand and who have a sound chance of gaining employment in that state or territory soon after their arrival. Skill matching is included under this category.
- Skilled Independent Regional (to 31 August 2008) for skilled persons who are unable to meet the pass mark for a permanent visa and wish to live and work in a regional or low population growth metropolitan area in Australia.

Other skilled migration

- ❑ Employer Sponsored — includes Employer Nomination for highly skilled persons nominated by employers in Australia who have been unable to find or train skilled workers in Australia for the position, the Regional Sponsored Migration Scheme for employers in regional Australia to employ skilled people in positions unable to be filled from the local labour market and Labour Agreements which are formal arrangements for an Australian industry group or employer to recruit a specified number of skilled workers on a temporary or permanent basis over a number of years.
- ❑ Business Skills—for successful business persons with established skills in business who have a genuine commitment to owning and managing a business in Australia.
- ❑ Distinguished Talent—for persons who have outstanding records of achievement in a profession, occupation, the arts or sport.

There is also a Special Eligibility category which caters for other types of settler arrivals within the Migration program not included in the Family or Skill Streams. These are:

- ❑ Former citizen of Australia
- ❑ Former resident of Australia
- ❑ Family of New Zealand Citizen for dependants of New Zealand citizens who have settled or intend to settle permanently in Australia.

The Humanitarian Program has two parts: an offshore resettlement program for persons overseas, and onshore protection for those persons already in Australia who arrived on temporary visas or in an unauthorised manner, and who claim Australia's protection.

The offshore resettlement program comprises three categories:

- ❑ the Refugee program which provides resettlement to Australia for persons outside their home country subject to persecution in their home country.
- ❑ the Special Humanitarian programs (SHP) which comprise the In-country Special Humanitarian program for persons suffering persecution within their own country, and the Global Special Humanitarian program for persons who have left their country because of substantial discrimination

amounting to a gross violation of human rights.

- ❑ the Special Assistance Category (SAC) which embraced groups determined by the Minister for Immigration and Citizenship to be of special concern to Australia and in real need, but who do not fit within other humanitarian categories. This program also assisted those internally and externally displaced people who had close family links in Australia. This category was closed during the 2000-01 program year.

In addition there are some categories not covered by the Migration or Humanitarian programs. These are:

- ❑ New Zealand Citizens, which refers to the arrival of New Zealand citizens under the Trans-Tasman Travel Arrangement.
- ❑ Other, which refers primarily to the arrival in Australia of children born to Australian citizens overseas. It also includes residents of Cocos (Keeling) Islands, Norfolk Island and persons granted Australian citizenship overseas.

Classification of countries and regions

Statistics in this publication are classified to regions and countries based on the Australian Bureau of Statistics (ABS) *Standard Australian Classification of Countries* (SACC). The classification is based on the concept of geographic proximity. It groups neighbouring countries into broad geographic areas on the basis of their similarity in terms of social, cultural, economic and political characteristics.

The country classification used in this report is listed on page 65. In the tables in this publication some minor groups have been combined due to space limitations. For further information about SACC and for copies of the classification please contact the ABS.

Following amendments to Section 17(a) of the *Acts Interpretation Act 1901—1973* effective 1 July 1992, the territories of Christmas Island and Cocos (Keeling) Islands now form part of geographic Australia. The Jervis Bay Territory has always been a territory in its own right, and following self-government for the ACT it is no longer included with the ACT for statistical purposes. These three territories are classified as the ninth state/territory of Australia.

'Australian External Territories' comprise the statistical units of Norfolk Island and 'Other Australian External Territories'.

Former Yugoslavia

Separate data for the federation of Serbia and Montenegro has been available since July 1998, Montenegro declared its independence on 3 June 2006. Prior to July 1998 the Former Yugoslavia nfd component was a substantial proportion of total Former Yugoslavia. Consequently the separate figures for the individual countries were likely to be significantly understated.

Former USSR

The separate figures for component countries of the former USSR are likely to be understated and should be used with caution.

Ethiopia and Eritrea

Caution is also required when using data for Ethiopia. This figure may include arrivals born in Eritrea since settlers who reported Ethiopia as their country of birth were coded as such, despite the fact that they may have been born in what is now called Eritrea.

Additional data

The Program Statistics and Monitoring Section offers a range of tables not published in this report, upon request. Statistics on settler arrivals can be cross-tabulated with the following data items:

- country of birth
- country of citizenship
- country of last residence
- state/territory of intended residence
- sex
- age
- migration category
- occupation
- applicant type (primary, secondary)

More complex requests for data and requests for multiple years do incur a charge.

Symbols and abbreviations

The following symbols or abbreviations are used throughout this publication:

excl	=	excluding
na	=	not available
nec	=	not elsewhere classified
nei	=	not elsewhere included
nfd	=	not further defined
nya	=	not yet available
p	=	preliminary
r	=	revised
-	=	nil
..	=	not applicable

Rounding

Where figures have been rounded, differences may occur between sums of the component items and totals.

Country classification (based on SACC)

OCEANIA AND ANTARCTICA

Australia (includes External Territories)

Australia
Norfolk Island
Australian External Territories, nec

New Zealand

New Zealand

Melanesia

New Caledonia
Papua New Guinea
Solomon Islands
Vanuatu

Micronesia

Guam
Kiribati
Marshall Islands
Micronesia, Federated States of
Nauru
Northern Mariana Islands
Palau

Polynesia (excludes Hawaii)

Cook Islands
Fiji
French Polynesia
Niue
Pitcairn Island
Samoa
Samoa, American
Tokelau
Tonga
Tuvalu
Wallis and Futuna
Polynesia (excludes Hawaii), nec

Antarctica

Adélie Land (France)
Argentinian Antarctic Territory
Australian Antarctic Territory
British Antarctic Territory
Chilean Antarctic Territory
Queen Maud Land (Norway)
Ross Dependency (New Zealand)

NORTH-WEST EUROPE

United Kingdom

Channel Islands
England
Isle of Man
Northern Ireland
Scotland
Wales

Ireland

Ireland

Western Europe

Austria
Belgium
France
Germany
Liechtenstein
Luxembourg
Monaco
Netherlands
Switzerland

Northern Europe

Aland Islands
Denmark
Faroe Islands
Finland
Greenland
Iceland
Norway
Sweden

SOUTHERN AND EASTERN EUROPE

Southern Europe

Andorra
Gibraltar
Holy See
Italy
Malta
Portugal
San Marino
Spain

South Eastern Europe

Albania
Bosnia and Herzegovina
Bulgaria
Croatia
Cyprus
Former Serbia and Montenegro
Former Yugoslav Republic of Macedonia
Greece
Kosovo
Moldova
Montenegro
Romania
Serbia
Slovenia
Yugoslavia, Federal Republic of

Eastern Europe

Belarus
 Czech Republic
 Estonia
 Hungary
 Latvia
 Lithuania
 Poland
 Russian Federation
 Slovakia
 Ukraine

NORTH AFRICA AND THE MIDDLE EAST**North Africa**

Algeria
 Egypt
 Libya
 Morocco
 Spanish North Africa
 Sudan
 Tunisia
 Western Sahara

Middle East

Bahrain
 Gaza Strip and West Bank
 Iran
 Iraq
 Israel
 Jordan
 Kuwait
 Lebanon
 Oman
 Qatar
 Saudi Arabia
 Syria
 Turkey
 United Arab Emirates
 Yemen

SOUTH-EAST ASIA**Mainland South-East Asia**

Burma (Myanmar)
 Cambodia
 Laos
 Thailand
 Vietnam

Maritime South-East Asia

Brunei Darussalam
 Indonesia
 Malaysia
 Philippines
 Singapore

NORTH-EAST ASIA**Chinese Asia (includes Mongolia)**

China (excludes SARs and Taiwan)
 Hong Kong (SAR of China)
 Macau (SAR of China)
 Mongolia
 Taiwan

Japan and the Koreas

Japan
 Korea, Democratic People's Republic of (North)
 Korea, Republic of (South)

SOUTHERN AND CENTRAL ASIA**Southern Asia**

Bangladesh
 Bhutan
 India
 Maldives
 Nepal
 Pakistan
 Sri Lanka

Central Asia

Afghanistan
 Armenia
 Azerbaijan
 Georgia
 Kazakhstan
 Kyrgyzstan
 Tajikistan
 Turkmenistan
 Uzbekistan

AMERICAS**Northern America**

Bermuda
 Canada
 St Pierre and Miquelon
 United States of America

South America

Argentina
 Bolivia
 Brazil
 Chile
 Colombia
 Ecuador
 Falkland Islands
 French Guiana
 Guyana
 Paraguay
 Peru
 Suriname
 Uruguay
 Venezuela
 South America, nec

Central America

Belize
 Costa Rica
 El Salvador
 Guatemala
 Honduras
 Mexico
 Nicaragua
 Panama

Caribbean

Anguilla
 Antigua and Barbuda
 Aruba
 Bahamas
 Barbados
 Cayman Islands
 Cuba
 Dominica
 Dominican Republic
 Grenada
 Guadeloupe
 Haiti
 Jamaica
 Martinique
 Montserrat
 Netherlands Antilles
 Puerto Rico
 St Barthelemy
 St Kitts and Nevis
 St Lucia
 St Martin (French part)
 St Vincent and the Grenadines
 Trinidad and Tobago
 Turks and Caicos Islands
 Virgin Islands, British
 Virgin Islands, United States

SUB-SAHARAN AFRICA**Central and West Africa**

Benin
 Burkina Faso
 Cameroon
 Cape Verde
 Central African Republic
 Chad
 Congo
 Congo, Democratic Republic of
 Côte d'Ivoire
 Equatorial Guinea
 Gabon
 Gambia
 Ghana
 Guinea
 Guinea-Bissau
 Liberia
 Mali
 Mauritania
 Niger

Nigeria
 Sao Tomé and Príncipe
 Senegal
 Sierra Leone
 Togo

Southern and East Africa

Angola
 Botswana
 Burundi
 Comoros
 Djibouti
 Eritrea
 Ethiopia
 Kenya
 Lesotho
 Madagascar
 Malawi
 Mauritius
 Mayotte
 Mozambique
 Namibia
 Réunion
 Rwanda
 St Helena
 Seychelles
 Somalia
 South Africa
 Swaziland
 Tanzania
 Uganda
 Zambia
 Zimbabwe
 Southern and East Africa, nec

Statistical publications

The Department of Immigration and Citizenship produces a number of regular and special publications providing statistics which are relevant to the formulation and assessment of immigration policies and procedures. Some of the publications referred to below, are available from the Department's website: <http://www.immi.gov.au/media/statistics> along with other migration information.

Migrant data can also be obtained from the Australian Bureau of Statistics (ABS). See the ABS website <http://www.abs.gov.au> for more details.

Regular publications

- Immigration Update* (produced biannually)
- Settler Arrivals* (produced annually)
- Emigration* (re-commenced 2005-2006, produced annually)
- Population Flows — Immigration Aspects* (produced annually)